

The background of the slide features a silhouette of a large acacia tree on the left and several smaller acacia trees on the right, set against a sunset sky with a gradient from orange at the horizon to blue at the top. The text is overlaid on this background.

MOUNT BURGESS MINING N.L.

**Botswana Resource Sector
Conference**

August 10th 2005

**Presented by:
Martin Spence**

MOUNT BURGESS MINING N.L.

A.C.N. 009 067 476

Listed on the Australian Stock Exchange since 1985

–Listing Code MTB

Issued Share Capital 164,040,000 shares

**Level 4, 109 St Georges Terrace
Perth, Western Australia, 6000**

**Postal: PO Box Z5301, St Georges Terrace
Perth, Western Australia, 6831**

Tel: +61 8 9322 6311

Fax: +61 8 9322 4607

Email: mtb@mountburgess.com

Website: www.mountburgess.com

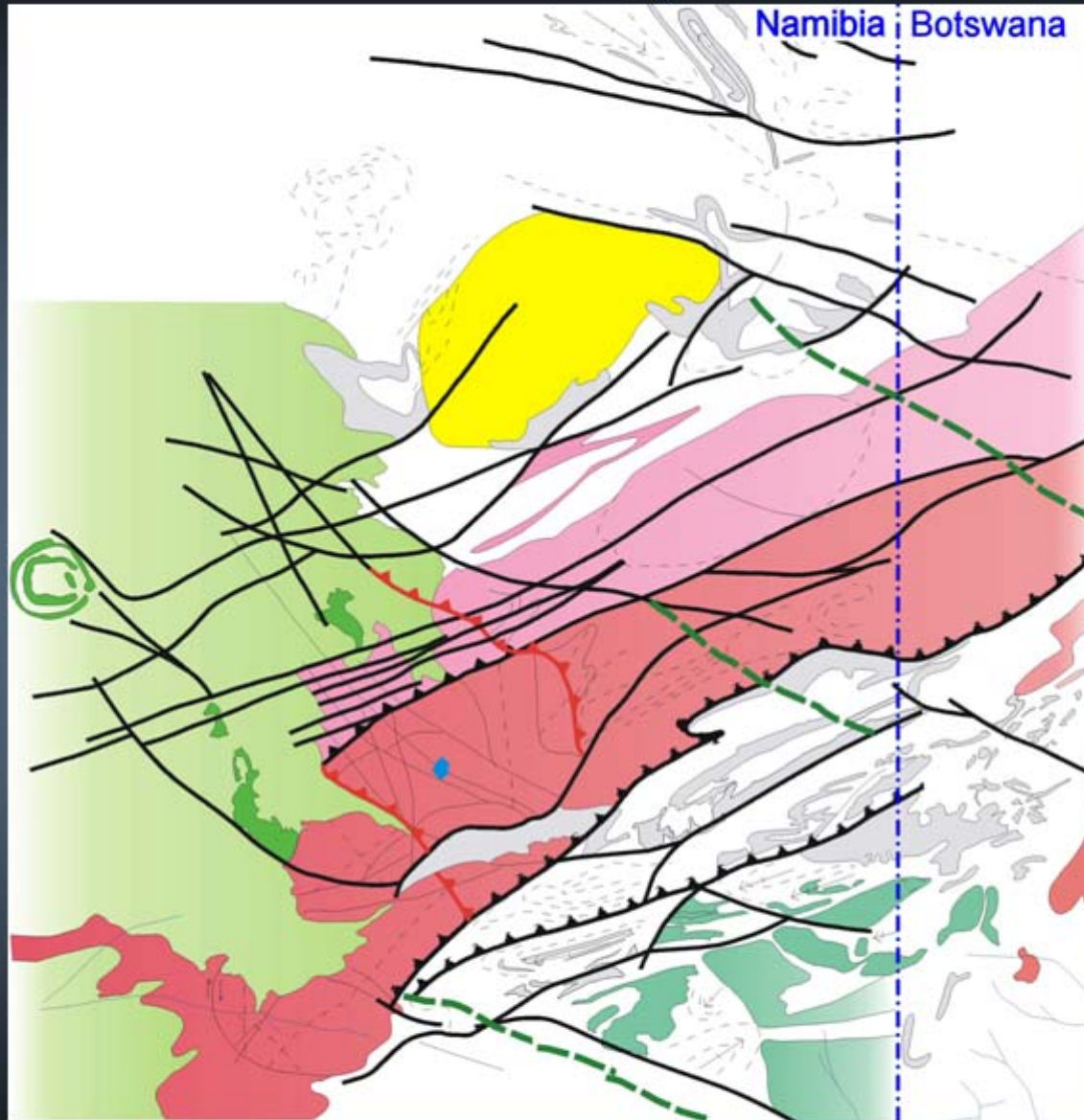
Project Locations



300km

MOUNT BURGESS MINING N.L.

Tsumkwe Interpreted Geology



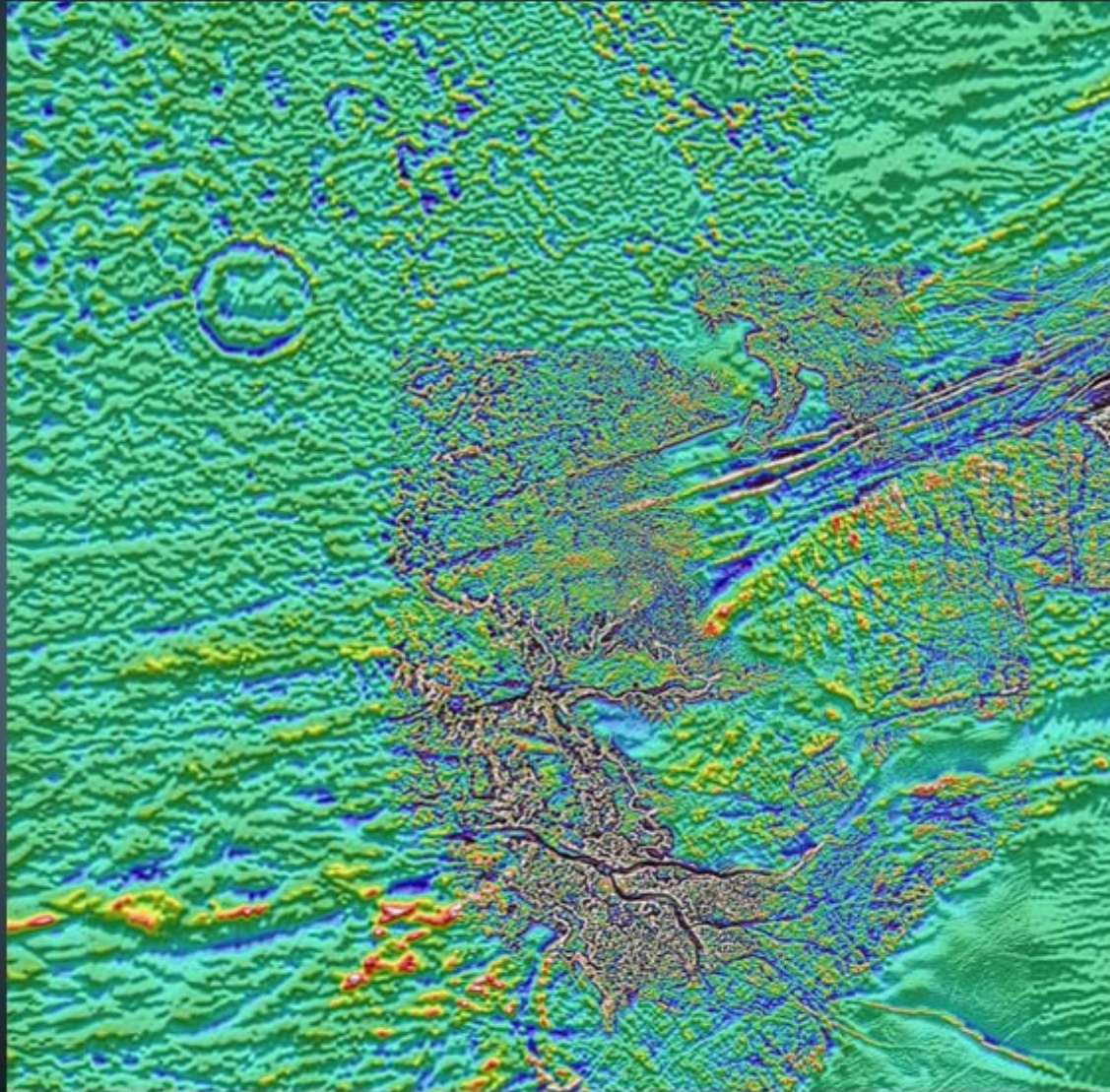
- Fault
 - ▲— Thrust Fault
 - ▲— Post Karoo Thrust Fault
 - - - Foliation
 - + → Anticline / Syncline Axis
 - Drainage
 - Nossib Quartzite
 - Limestone
 - Dolomite
 - Gneiss
 - Granite and Gneiss
 - Basalt
 - - - Dyke
 - ◆ Gura Kimberlites
- Damara

10km

MOUNT BURGESS MINING N.L.

Aeromagnetics

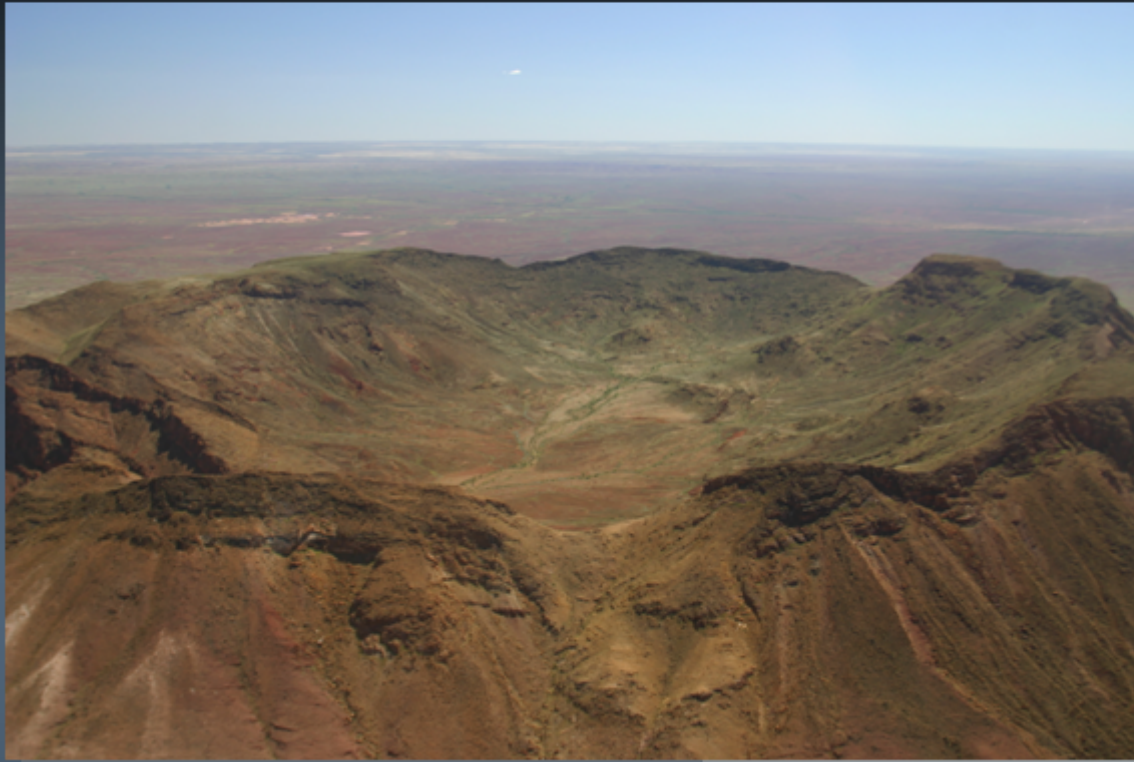
over western tenements



5km

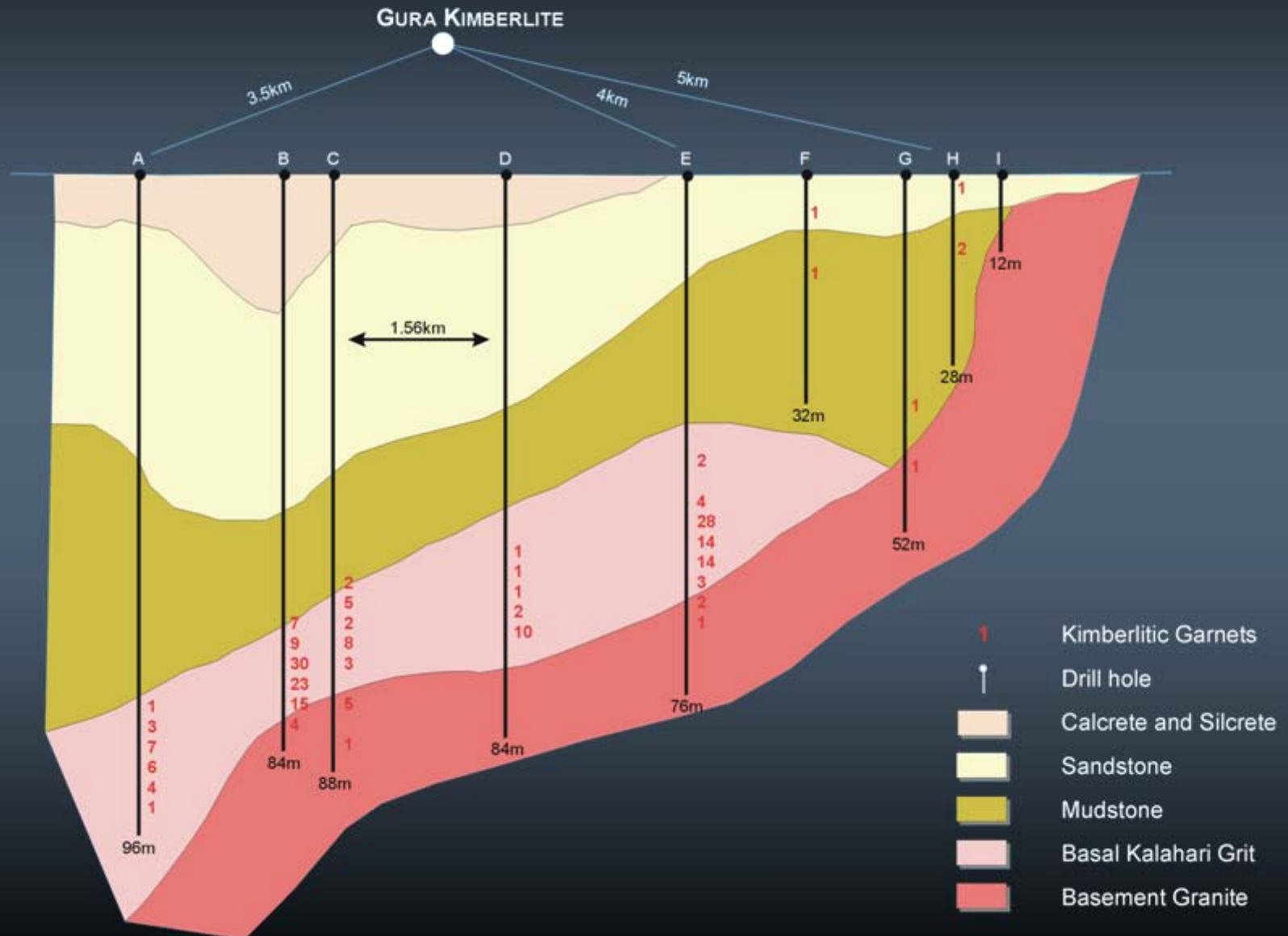
MOUNT BURGESS MINING N.L.

Extinct Volcano Southern Namibia

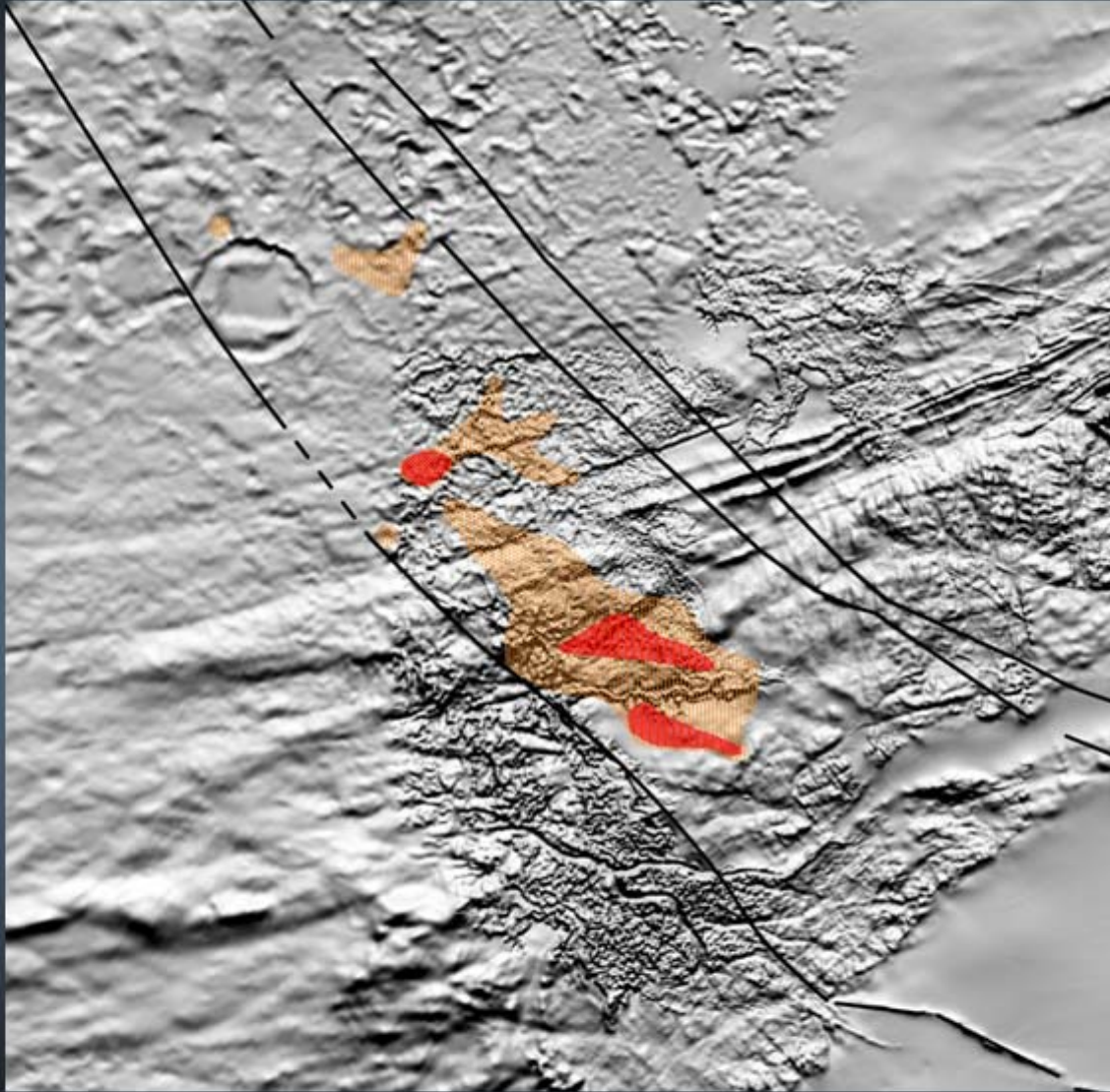


Orientation Drilling

downslope of Gura kimberlites



High Garnet Count Clusters



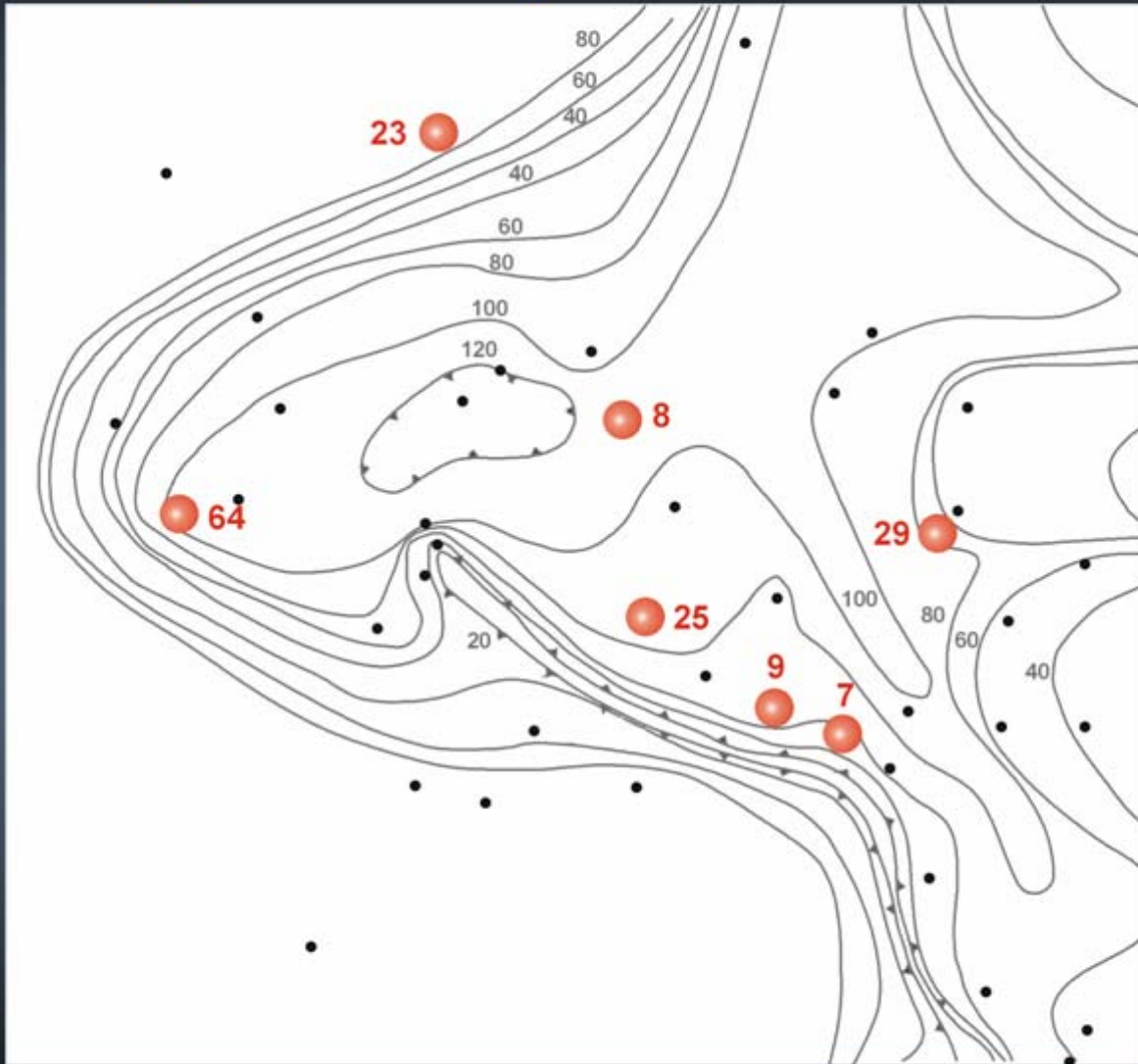
- Fault
- Diamond / G10 Cluster
- G9 Cluster

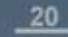


5km

MOUNT BURGESS MINING N.L.

Contours of Depth to Basement

with high kimberlitic garnet counts from drilling

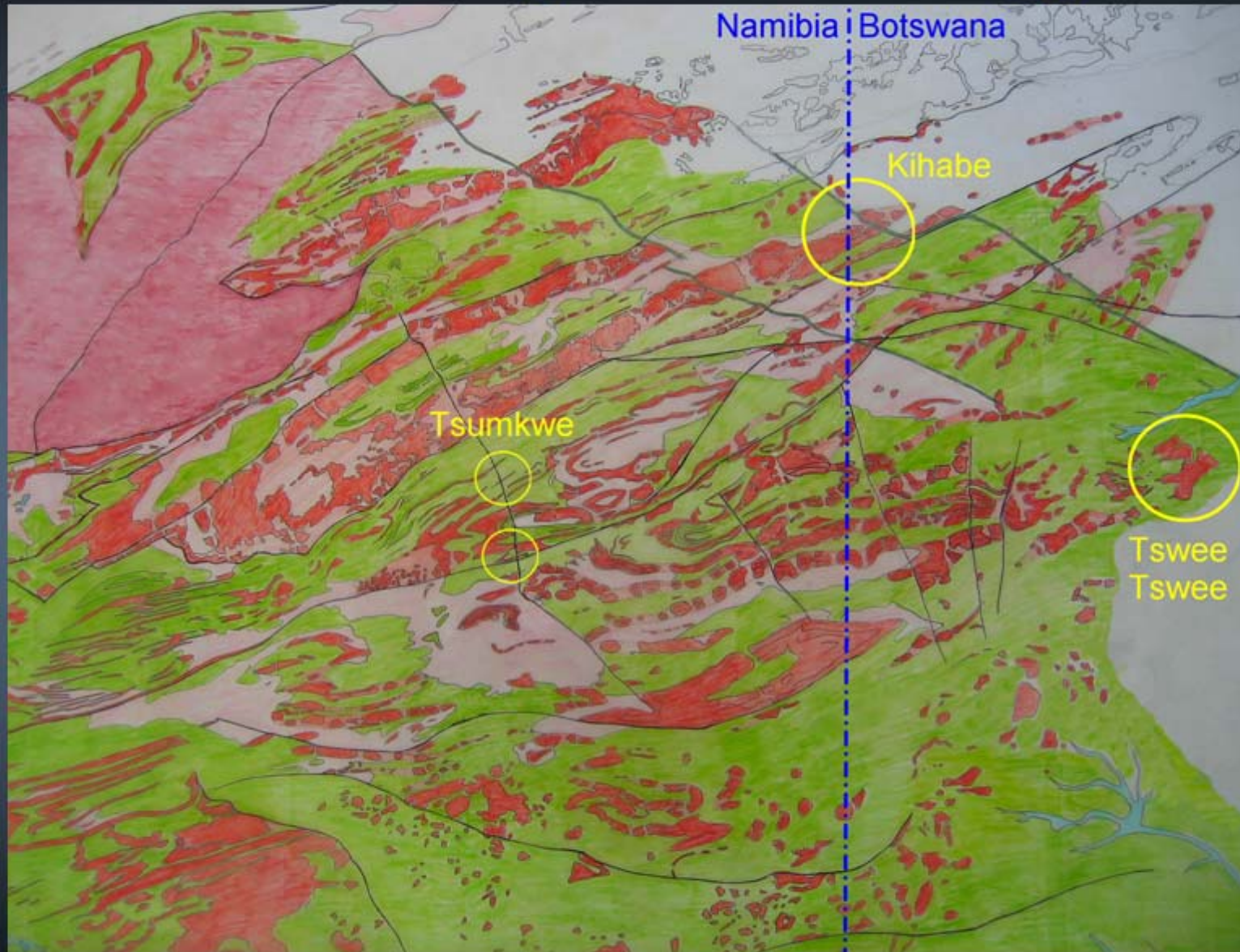


-  20 Depth to Basement Contour (m)
-  Drill hole
-  64 Drill hole > 6 Kimberlitic Garnets

2km

MOUNT BURGESS MINING N.L.

Base Metals Interpreted Geology



Exposed Damaran

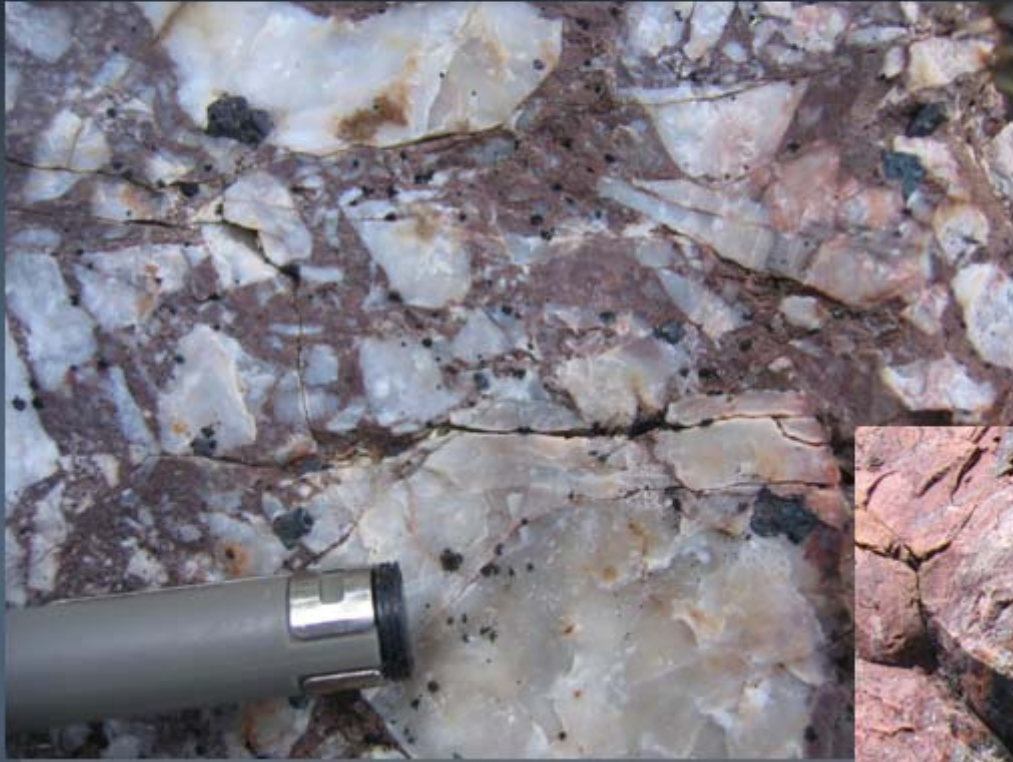
inland from the Skeleton Coast



MOUNT BURGESS MINING N.L.

Sulphides in Breccia

Tsumkwe base metals area

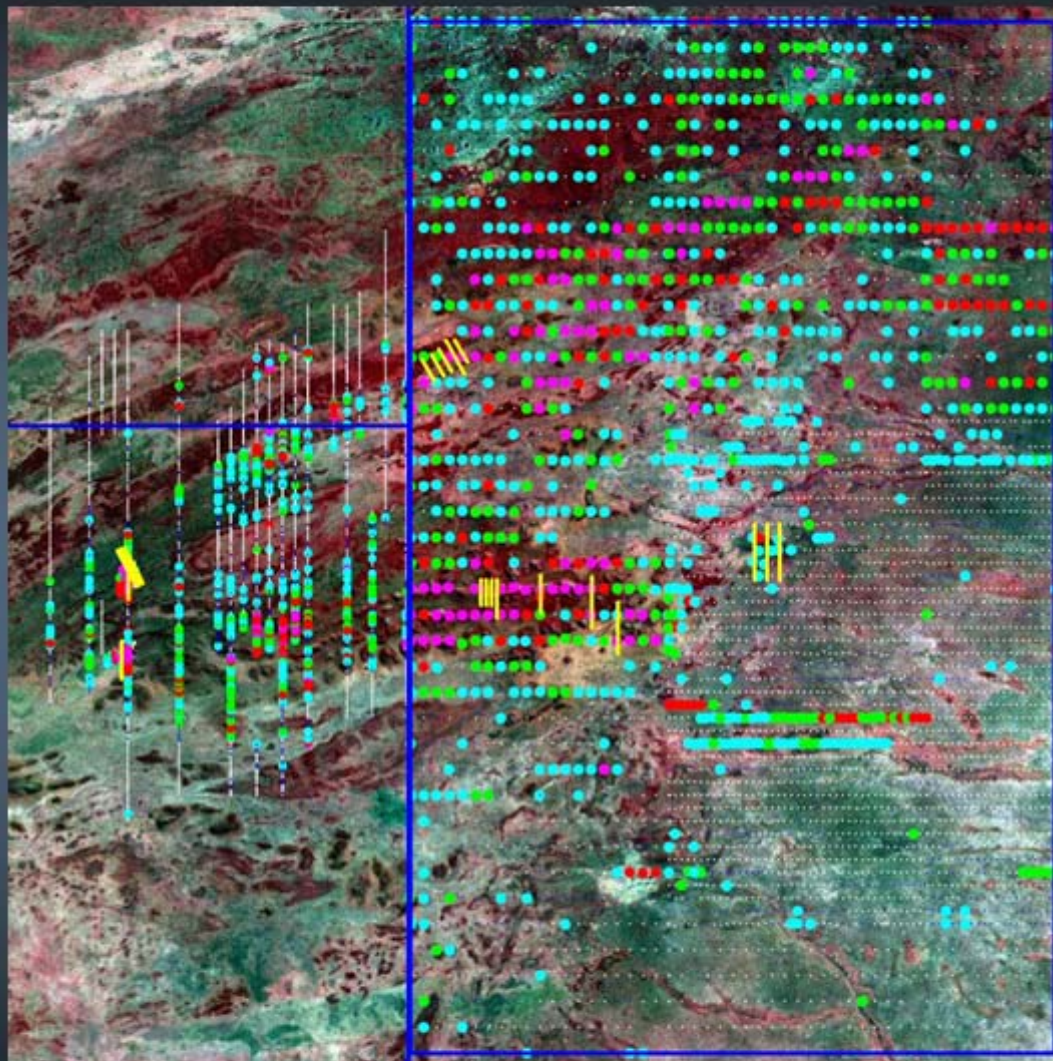


Base Metals Soil Geochem & IP Lines

Tsumkwe Base Metals
Soil Geochemistry Pb (ppm)

- > 100
- 69 to 100
- 55 to 69
- 42 to 55
- 30 to 42
- < 30

— IP Lines



Namibia Botswana

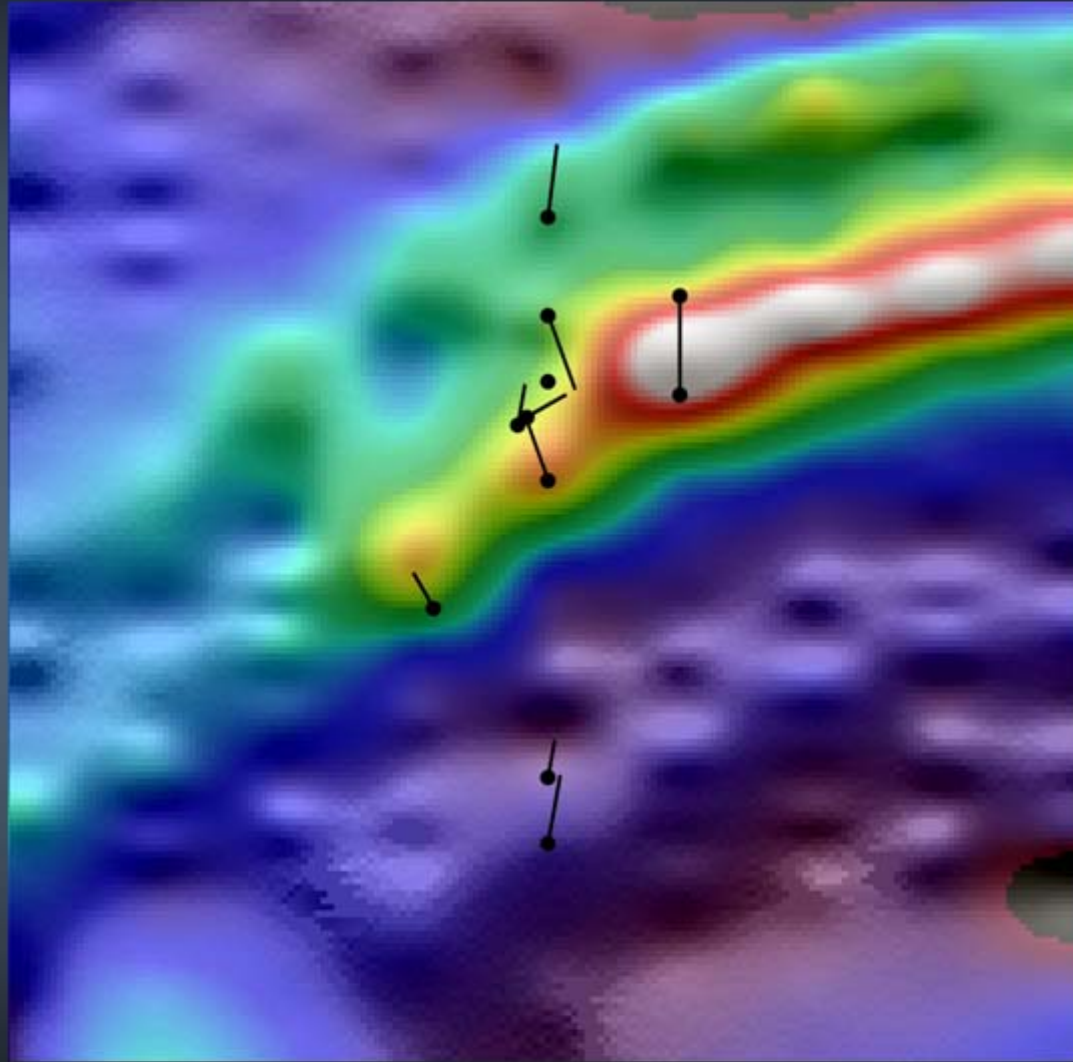
Botswana Government
Soil Geochemistry Pb (ppm)

- > 132
- 31 to 38
- 24 to 31
- 19 to 24
- 15 to 19
- < 15

5km

MOUNT BURGESS MINING N.L.

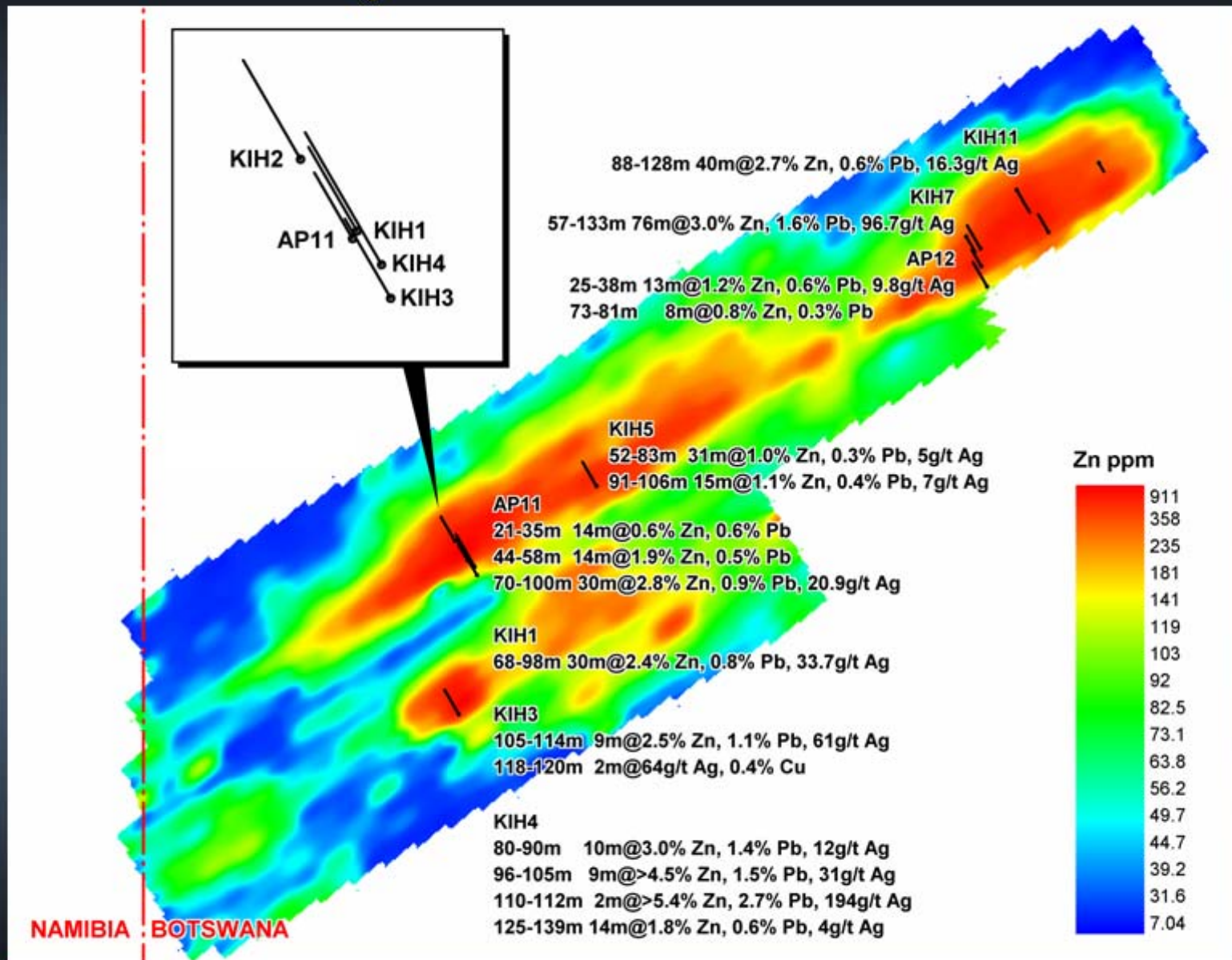
Gradient Array IP – Tsumkwe Area



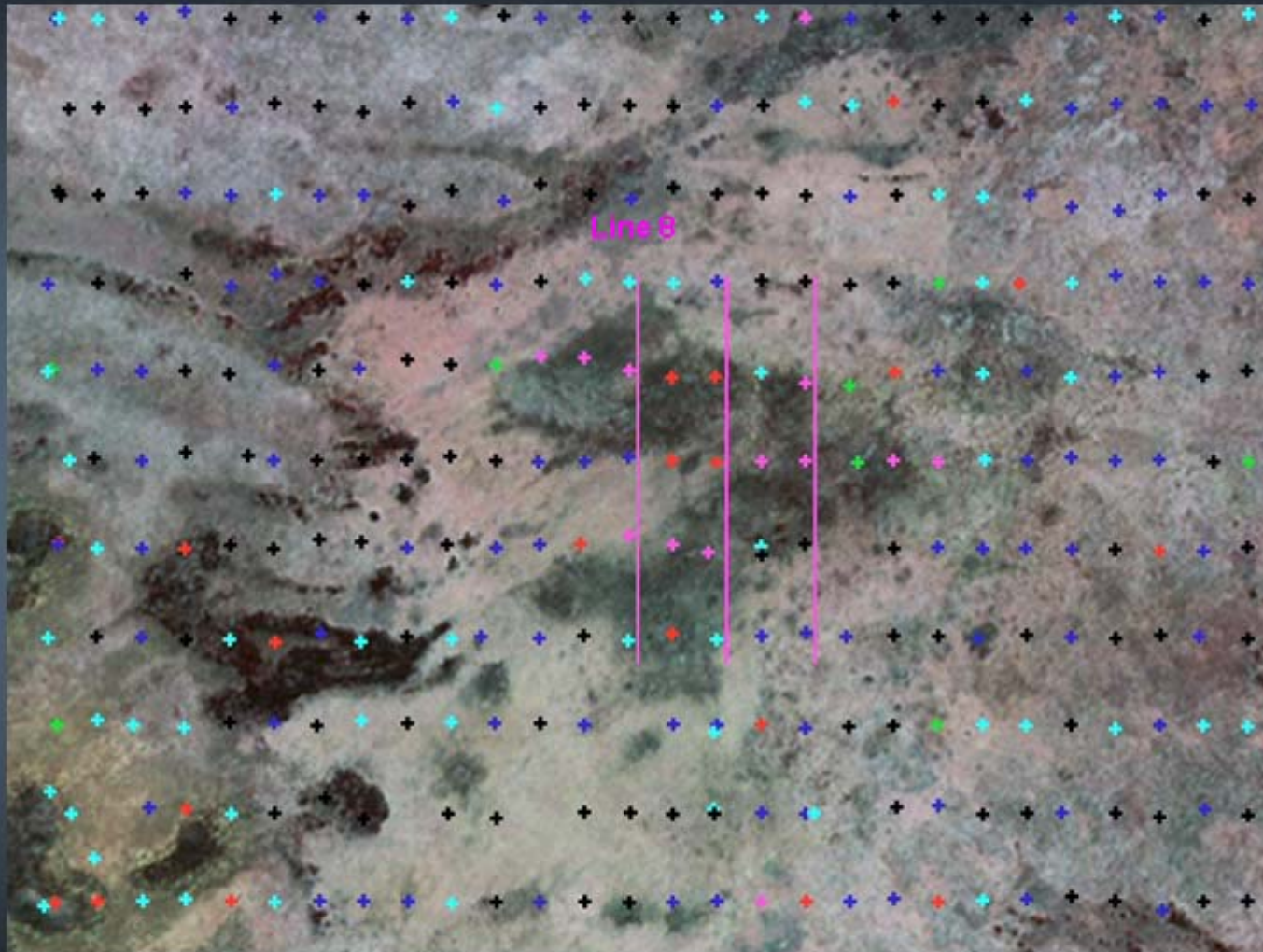
100m

MOUNT BURGESS MINING N.L.

Zinc Anomaly – Kihabe Area



Soil Geochem & IP - Tswee Tswee Area



Botswana Government
Soil Geochemistry Cu (ppm)

- ✦ > 19
- ✦ 14 to 19
- ✦ 12 to 14
- ✦ 9 to 12
- ✦ 7 to 9
- ✦ < 7

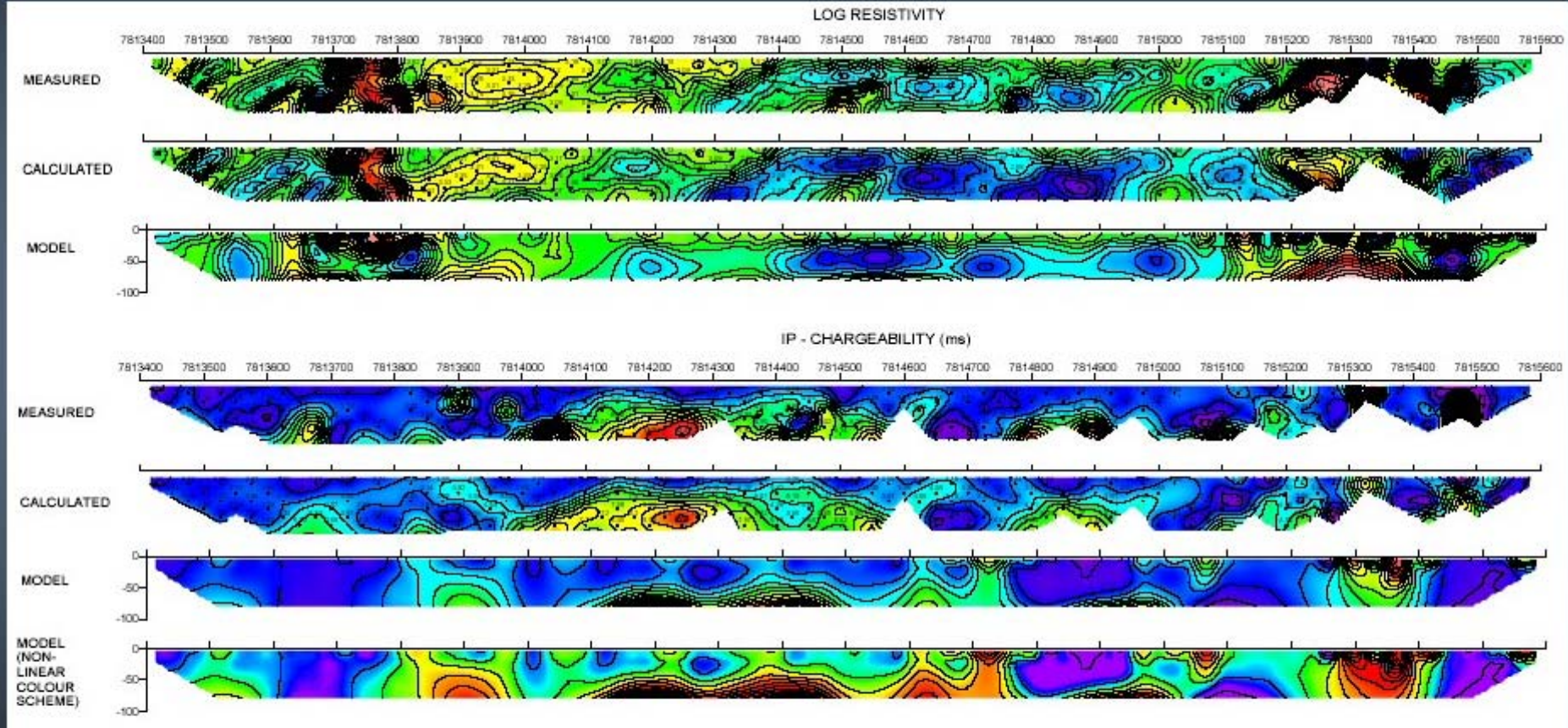
— IP Lines

1km

MOUNT BURGESS MINING N.L.

Line 8 Dipole-Dipole IP Survey

Pseudosections & Model Sections



200m

MOUNT BURGESS MINING N.L.

MOUNT BURGESS MINING N.L.



For more information visit

www.mountburgess.com