

Tsumkwe Diamond Project Namibia

“A Concept for a Discovery”

October 2007

MOUNT BURGESS MINING N.L.

Company Details

ACN: 009 067 476

Listed on the Australian Stock Exchange since 1985
Listing Code MTB

Issued Share Capital 251,707,000 shares

Street Address:
Level 4, 109 St Georges Terrace
Perth, Western Australia 6000

Postal Address:
PO Box Z5301 St Georges Terrace
Perth, Western Australia 6831

Tel: +61 8 9322 6311
Fax: +61 8 9322 4607

Email: mtb@mountburgess.com
Website: www.mountburgess.com

MOUNT BURGESS MINING N.L.

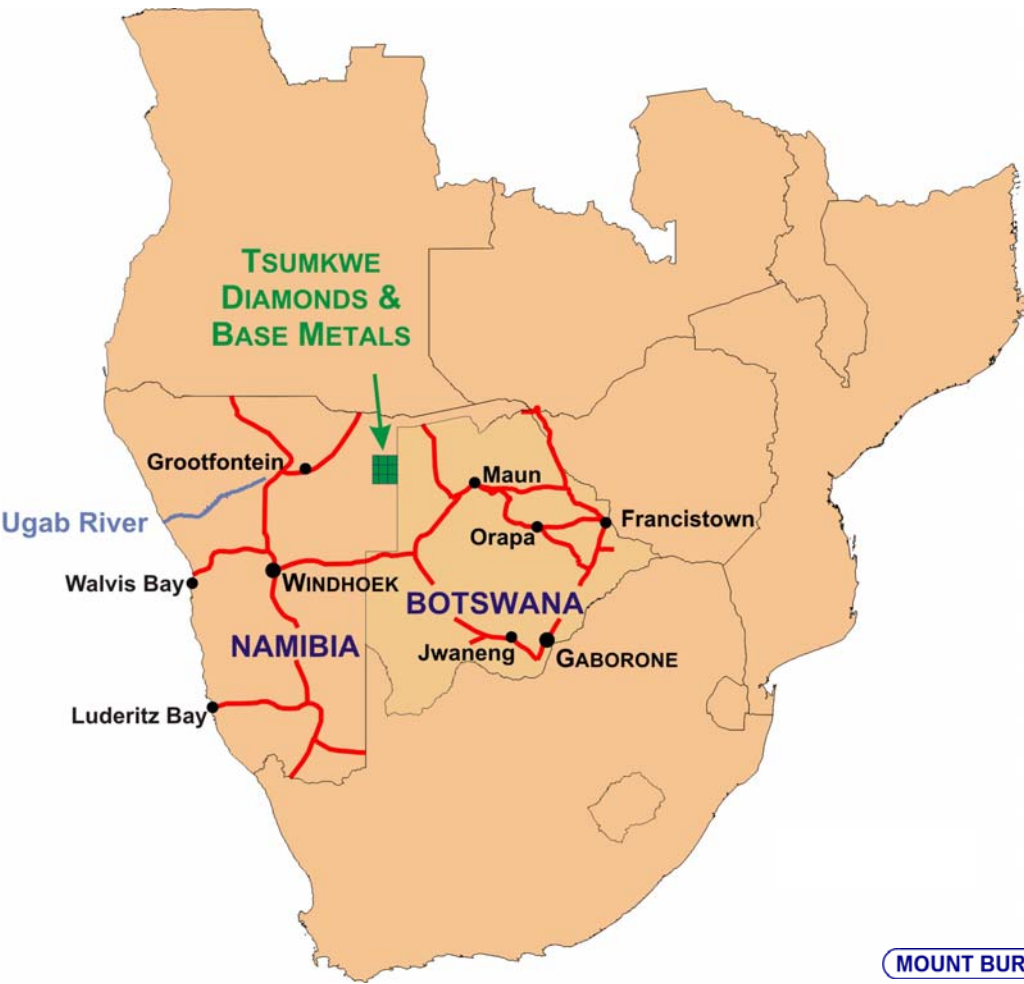
Forward Looking Statement

This presentation contains forward looking statements in respect of the projects being reported on by the Company. Any statements in respect of mineral reserves, resources and zones of mineralisation may also be deemed to be forward looking statements in that they contain estimates which the Company believes have been based on reasonably probable assumptions in respect of mineralisation that has been found and possibly will be found and ultimately developed and mined. Forward looking statements are not statements of historical fact, they are based on reasonable projections and calculations, the ultimate results or outcomes of which may differ materially from those described or incorporated in the forward looking statements. Such differences or changes in circumstances to those described or incorporated in the forward looking statements may arise as a consequence of the variety of risks, uncertainties and other factors relative to the exploration and mining industry and the particular properties in which the Company has an interest. Such risks, uncertainties and other factors could include but would not necessarily be limited to fluctuations in metals and minerals prices, fluctuations in rates of exchange, continuity or lack of continuity of projected zones of mineralisation determined from further drilling, uncertainties in interpreting drilling results, uncertainties in interpreting assay results, metallurgical test work and projected metal recoveries therefrom, uncertainties in financial projections and cost estimates, uncertainties in securing and commercially maintaining end product marketing and distribution, uncertainties in completing required financing, uncertainties relative to environmental issues, government approvals, changes in government policy and political instability in the countries in which the Company operates.

Forward looking statements are based on beliefs, opinions, assessments and estimates of management and/or professional consultants hired by management. These beliefs, opinions, assessments and estimates are based on facts and information available to management and/or professional consultants at the time they are formed or made and are, in the opinion of management and/or consultants, applied as reasonably and responsibly as possible as at the time that they are applied. No obligation is assumed by management and/or consultants to amend such forward looking statements in the event of any changes to their beliefs, opinions, assessments and estimates, other than would normally be required of them to do so for the purpose of performing their duties in a responsible manner and keeping the market properly informed.

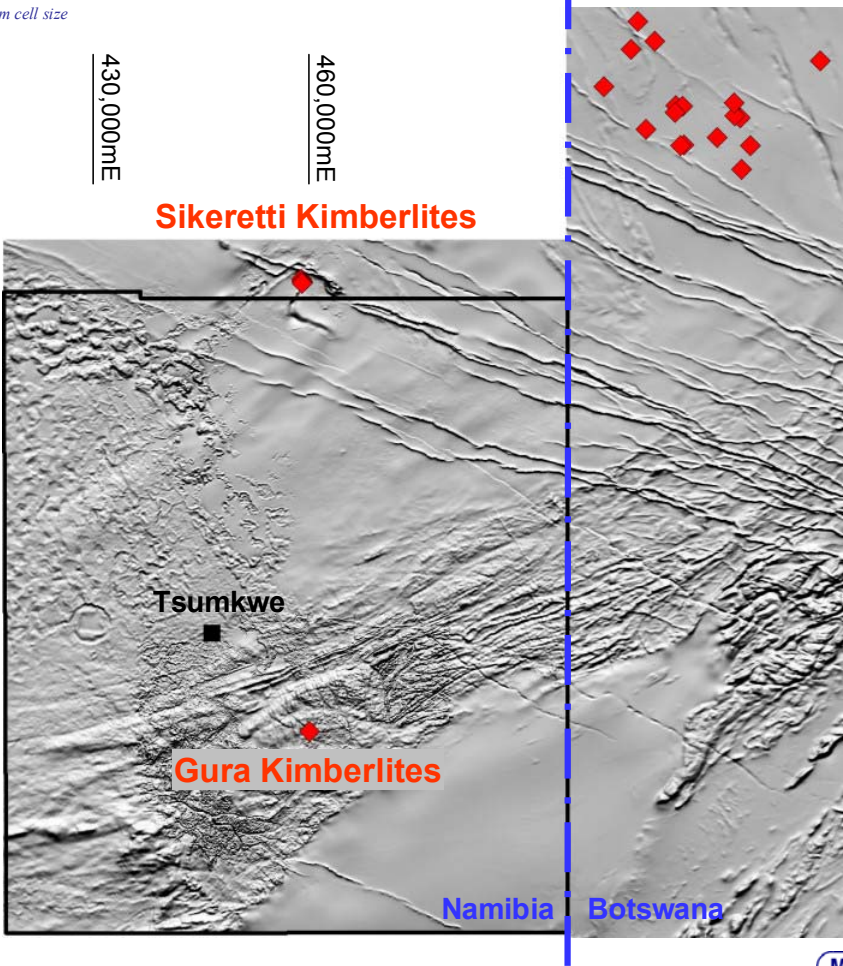
MOUNT BURGESS MINING N.L.

Tsumkwe Project Location

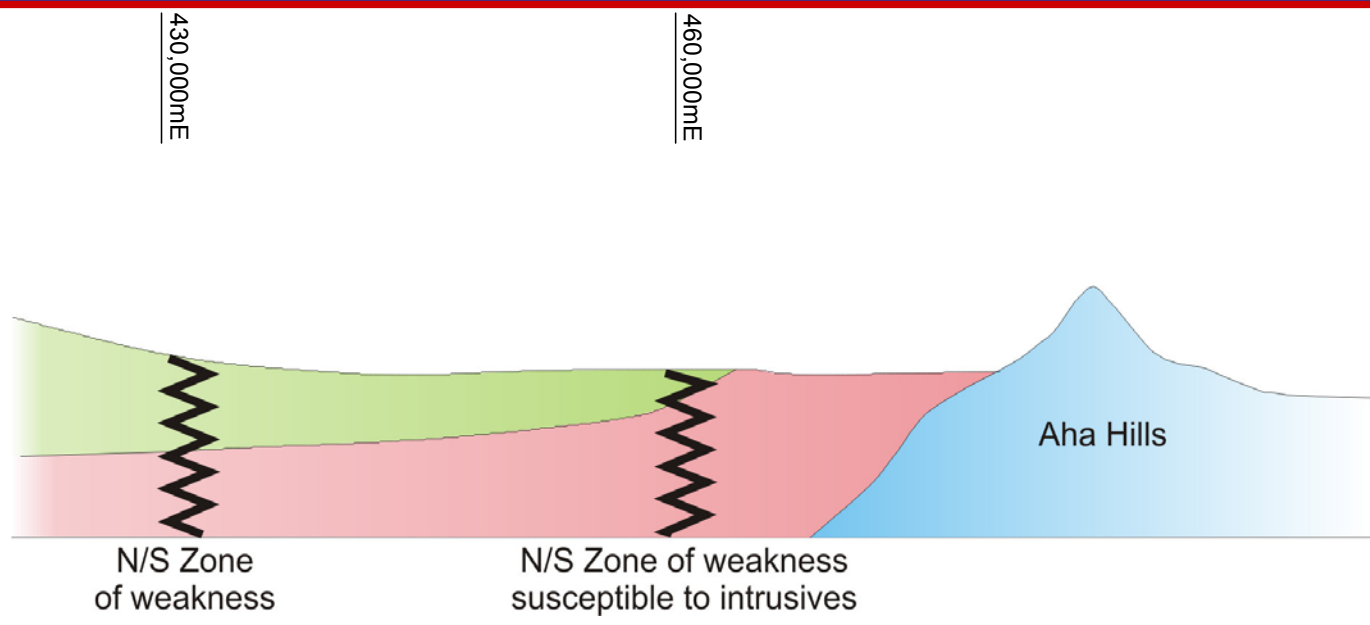


Kimberlite Discoveries in the Vicinity

Aeromag - RTP North Shaded Relief 50m cell size



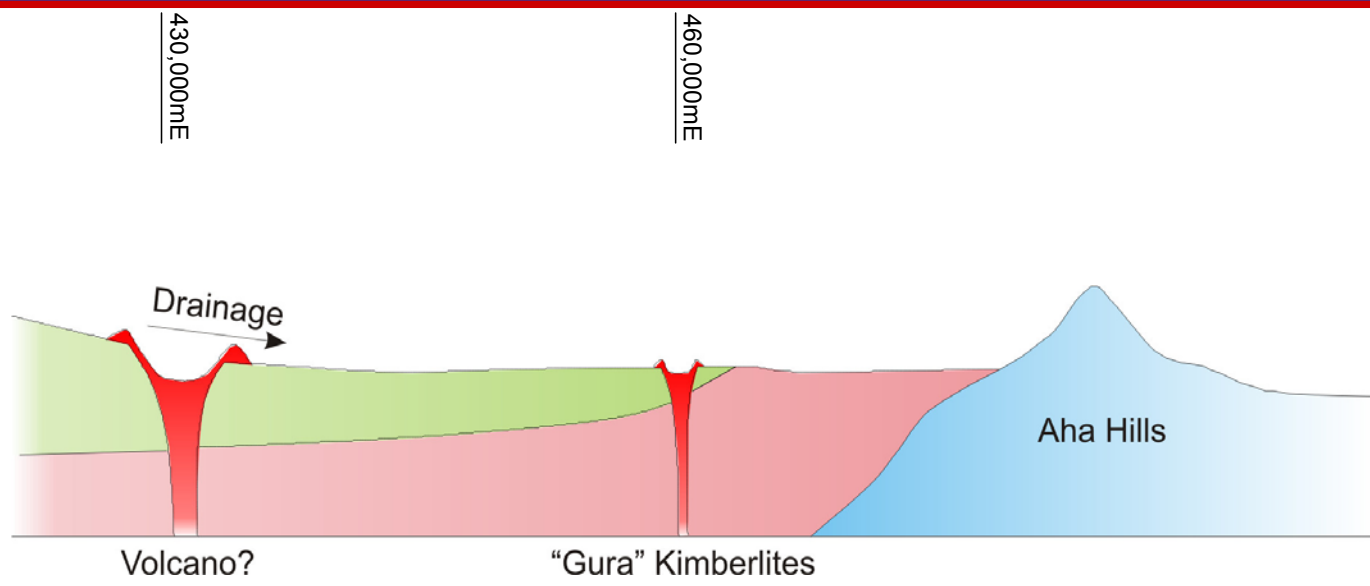
Pre Volcano / Kimberlites



- Legend
- Basalt
 - Granite
 - Damaran Metasediments

MOUNT BURGESS MINING N.L.

Pre Downwarp

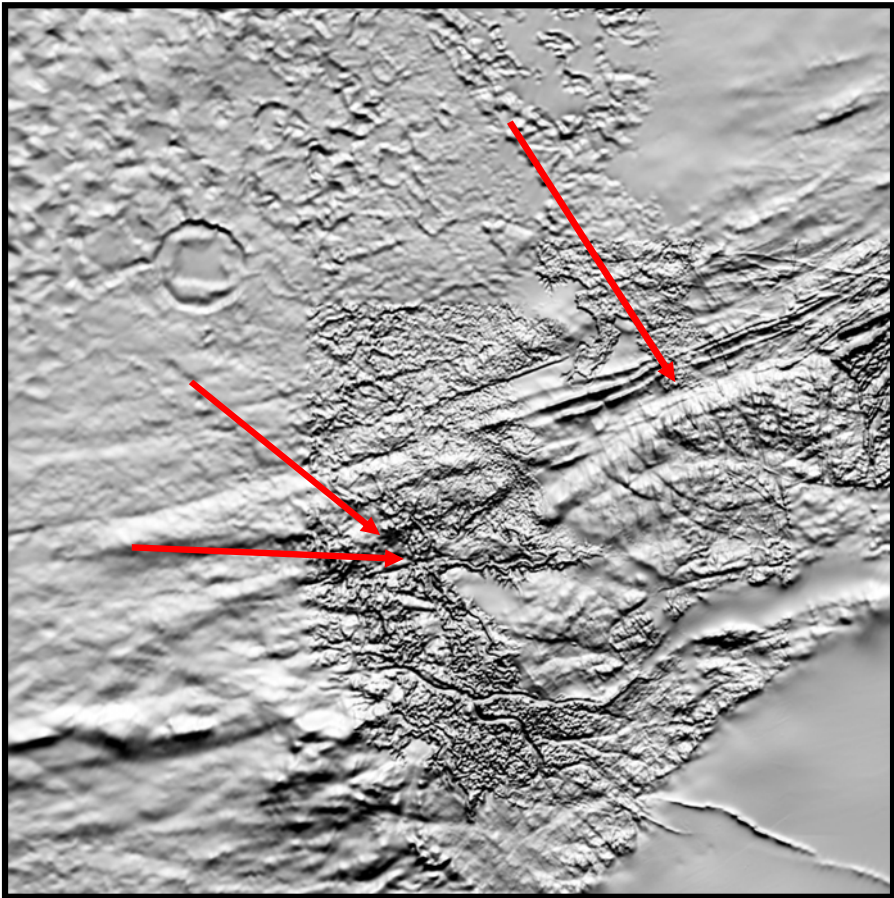


- Legend
- Basalt
 - Granite
 - Intrusive
 - Damaran Metasediments

MOUNT BURGESS MINING N.L.

Initial Post Kimberlite Drainage

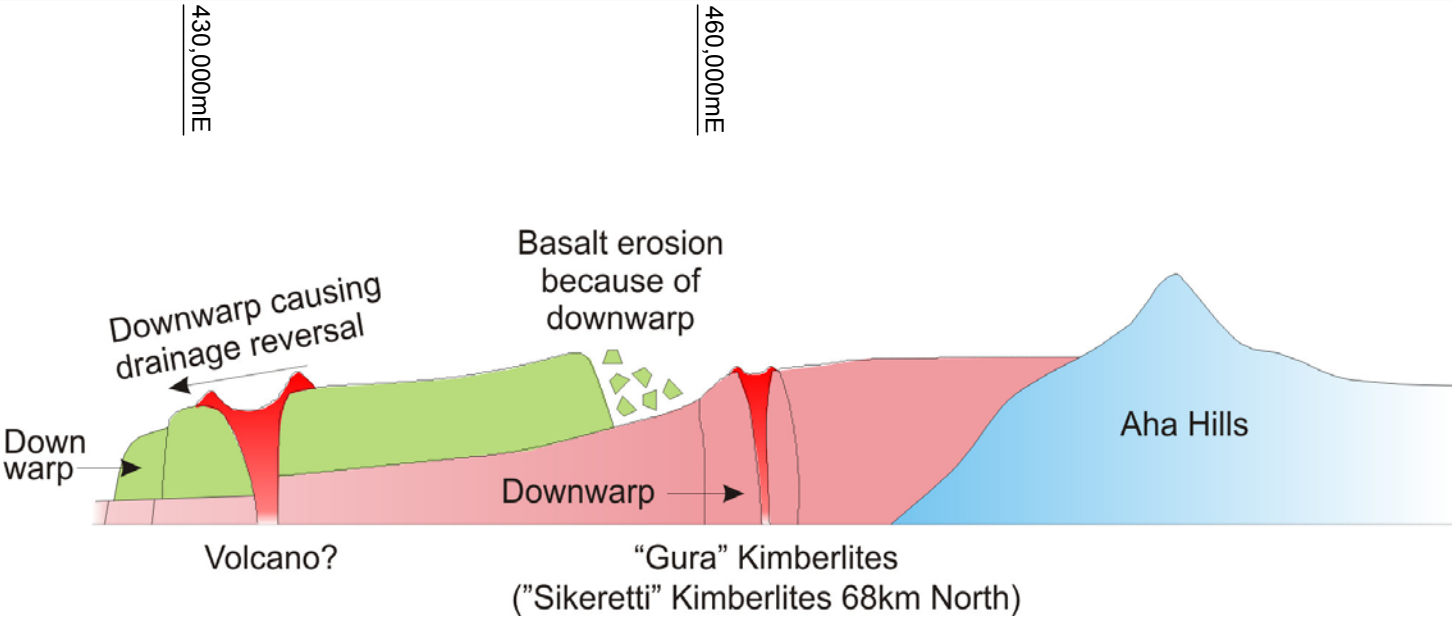
Aeromag - RTP North Shaded Relief 50m cell size



10km

MOUNT BURGESS MINING N.L.

Post Downwarp

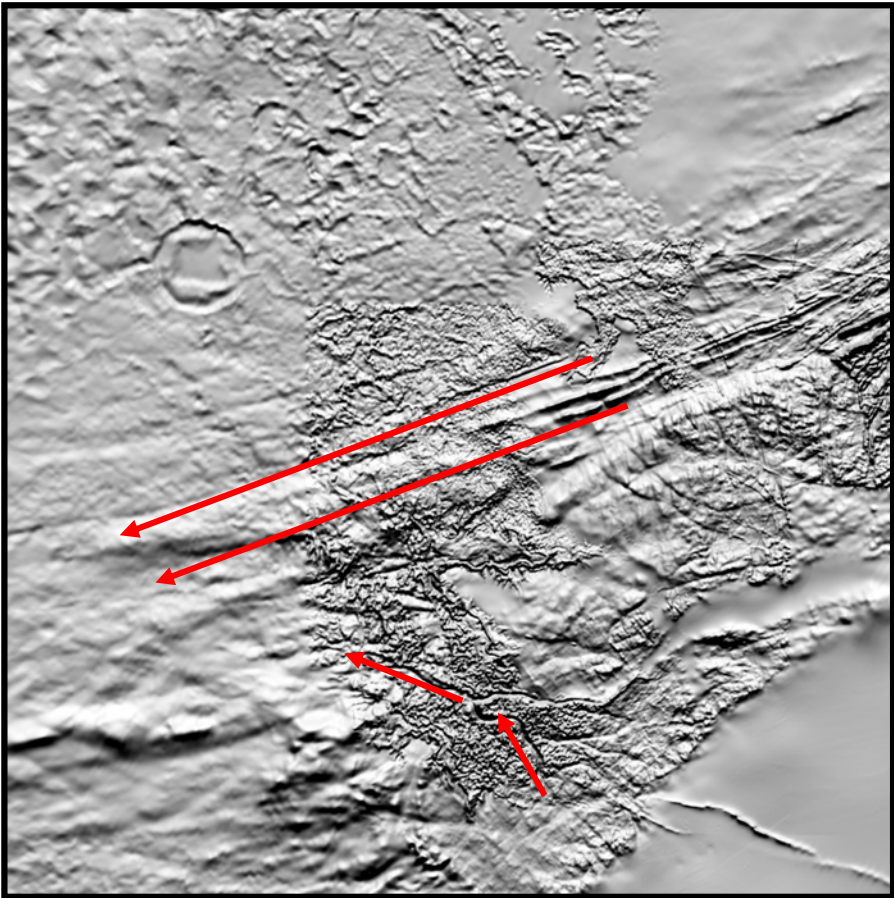


- Legend
- Basalt
 - Granite
 - Intrusive
 - Damaran Metasediments

MOUNT BURGESS MINING N.L.

Recent Drainage Reversal

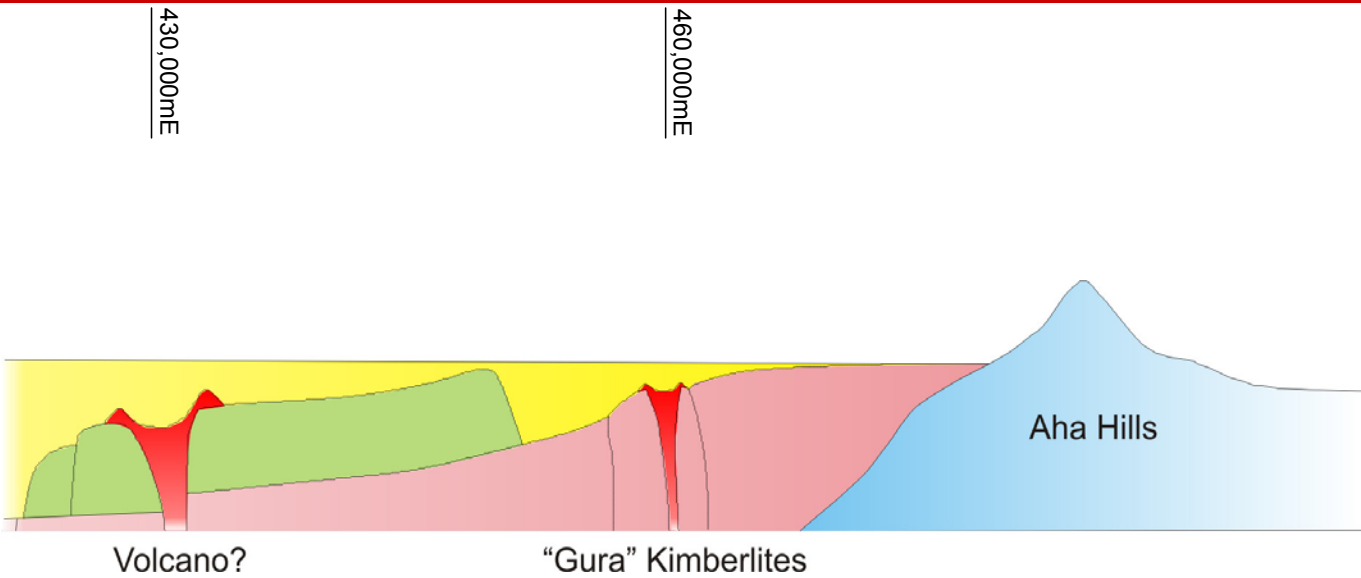
Aeromag - RTP North Shaded Relief 50m cell size



10km

MOUNT BURGESS MINING N.L.

Current Stratigraphy



Volcano?

"Gura" Kimberlites

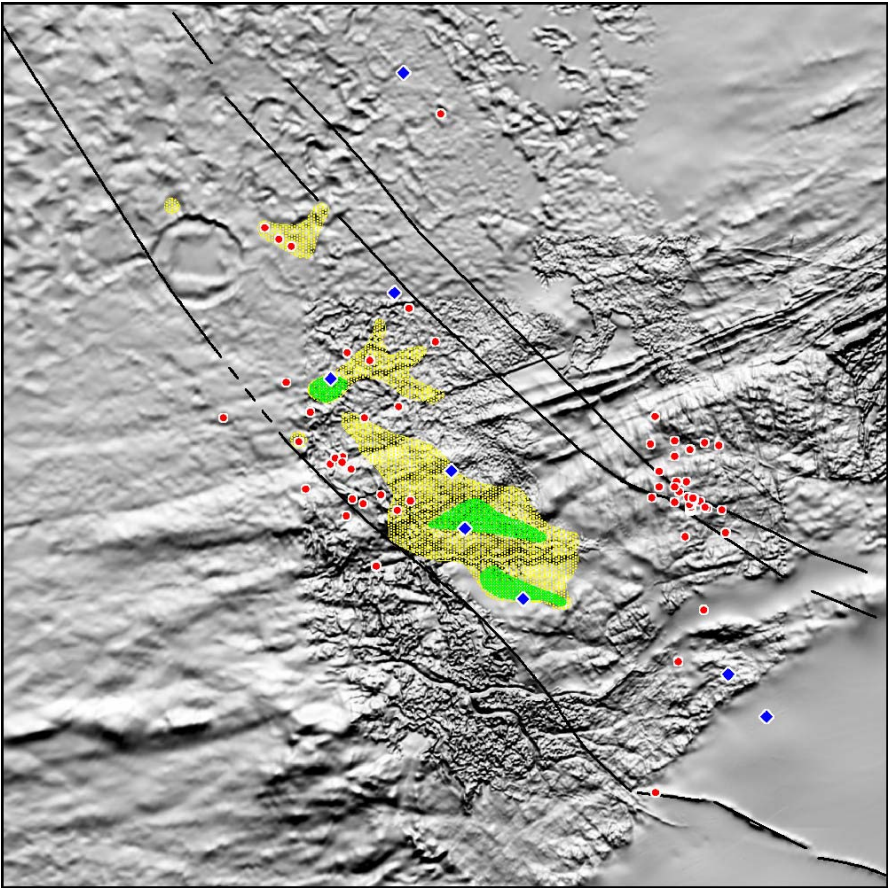
Aha Hills

Legend

- Basalt
- Granite
- Kalahari Sands
- Intrusive
- Damaran Metasediments

MOUNT BURGESS MINING N.L.

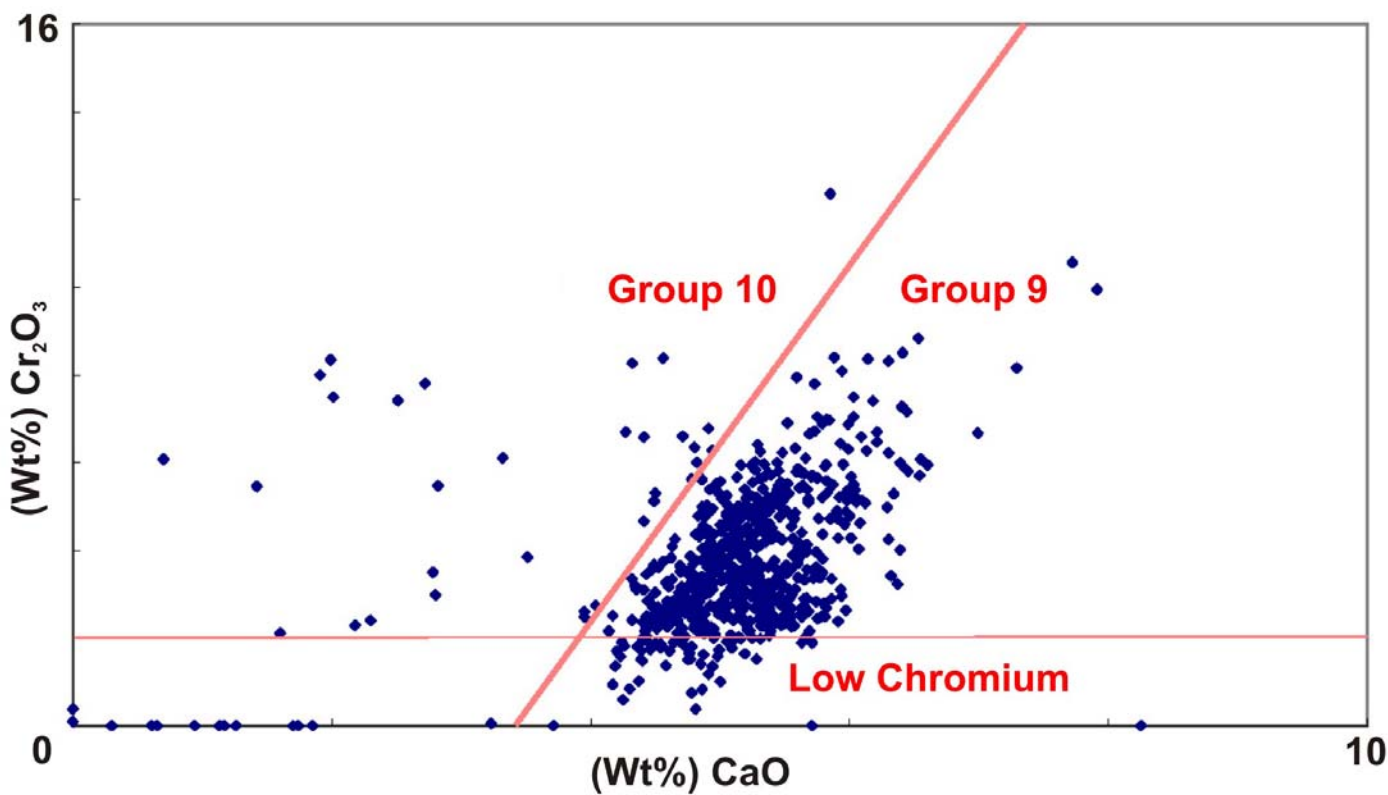
High Garnet Count Clusters



10km

MOUNT BURGESS MINING N.L.

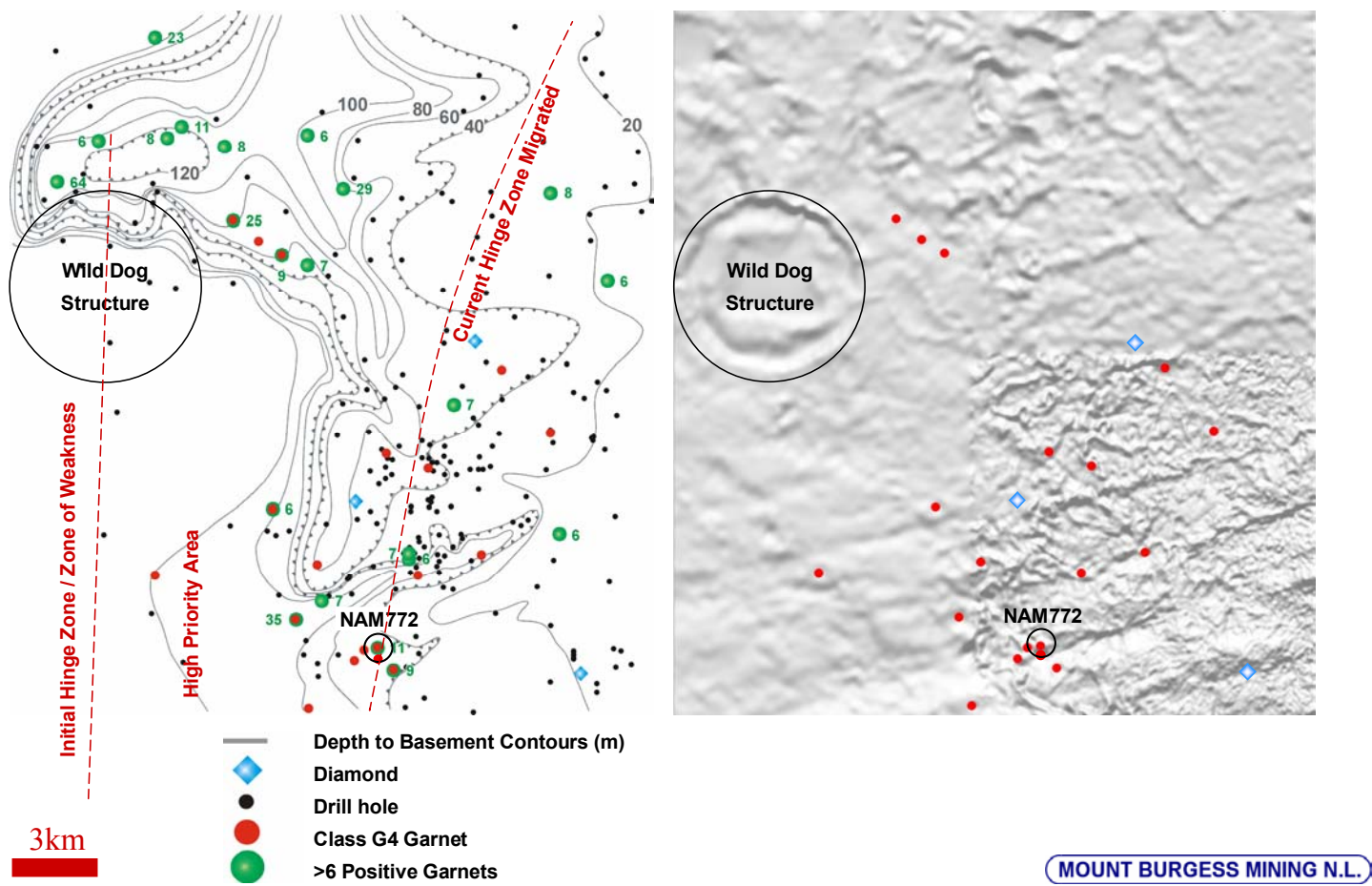
Tsumkwe Loam Garnet Analysis



MOUNT BURGESS MINING N.L.

Contours of Depth to Basement

with high kimberlitic garnet counts from drilling with aeromagnetics



Class 4 Garnet Clusters

