

MOUNT BURGESS MINING N.L.

ACN: 009 067 476

Level 4, 109 St Georges Terrace, Perth, Western Australia, 6000
PO Box Z5301, St Georges Terrace, Perth, Western Australia, 6831
Telephone: (61 8) 9322 6311 Email: mtb@mountburgess.com
Facsimile: (61 8) 9322 4607 Website: www.mountburgess.com

ASX RELEASE

27 February 2009

Diamond Exploration Botswana/Board Appointment

The Company is pleased to announce that seven prospecting licences for diamond exploration in Western Ngamiland, in North Western Botswana have been granted to its wholly owned subsidiary, Mount Burgess (Botswana) (Proprietary) Limited. (Refer to attachment).

The Company would like to thank the Department of Geological Survey of Botswana and the Ministry of Minerals Energy and Water Resources for their efforts in processing these applications.

These licences cover an area of approximately seven thousand square kilometres on the south eastern margins of the Angolan Craton, highly prospective for the discovery of diamondiferous kimberlites.

The area in Botswana adjoins the diamond exploration licences held by the Company at Tsumkwe in North Eastern Namibia, where to date it has discovered three (non diamondiferous) kimberlites.

Exploration on the Namibian licences has also yielded eight macro diamonds as well as four discrete G10 garnet anomalies, which have been sourced from diamond bearing kimberlite/s.

There is a probability that one or possibly two of these G10 garnet anomalies were sourced from the area now covered by the prospecting licences in Botswana and transported into Namibia through an evident palaeo drainage.

This area in Botswana was flown for aero-magnetics in 1998, which led to the discovery of the Xau Xau kimberlite field, some 30 km to the north of the Company's prospecting licences.

A number of aeromagnetic targets, displaying similar characteristics to kimberlite magnetic signatures have been identified and are currently being surveyed by close-spaced ground magnetics in preparation for drilling. Some forty of these targets will be test drilled in an initial 2000 metre drilling programme. (Two of the magnetic ground survey targets are shown on the attachment).

The Company believes that it is in an extremely advantageous position to have secured the grant of these prospecting licences in Botswana as, together with its adjoining ground holding in Namibia it has consolidated a significant area, highly prospective for the discovery of diamondiferous kimberlites.

Through its previous base metals exploration and resource development of its Kihabe zinc/lead/silver project, which falls within this same area in Botswana, the Company has a well established base camp and infra-structure from which it can conduct future diamond exploration programmes within reasonable distances. This will significantly reduce on going future exploration costs while operating in this area during this period requiring strict resource management. (The Company is still awaiting the completion of the Scoping Study in respect of the Kihabe base metals resource.)

Board Appointment

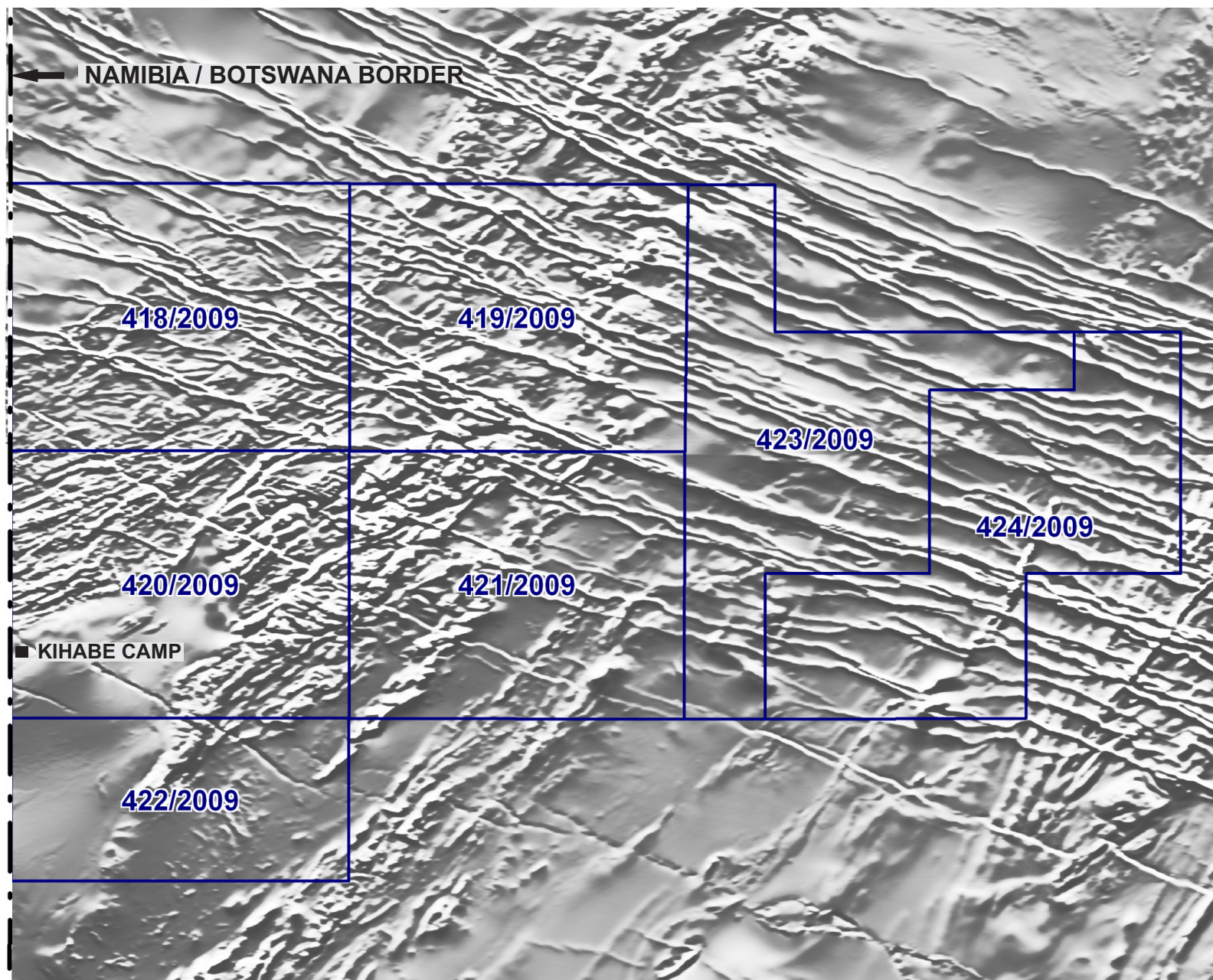
The Company is pleased to welcome the appointment of Mr Ben Mosigi as a technical Director to the Board of the Company.

Mr Ben Mosigi, M.Sc (Leicester University – UK) B.Sc (University of New Brunswick – Canada), Dipl. Mining Tech – Haileybury School of Mines, Canada, Member of the Geological Society of South Africa, Geologist, currently a Director of the Company's wholly owned subsidiary, Mount Burgess (Botswana) (Proprietary) Limited, is a resident and national of Botswana.

Mr Mosigi has significant experience in base metal and diamond exploration/mining. His previous diamond exploration and mining experience, which included a significant period of time with Debswana and Botswana Diamonfields covered work on the Orapa, Lethlakane, Jwaneng and Damtshaa in Botswana and the Bobbejaan, Water Fissure and Bellsbank kimberlites in the Republic of South Africa.

Mr Mosigi's past experience in diamond exploration and development will add significantly to the Company's diamond exploration effort.

Nigel Forrester
Chairman & Managing Director



MOUNT BURGESS MINING N.L.

**West Ngamiland Diamond Project
BOTSWANA**

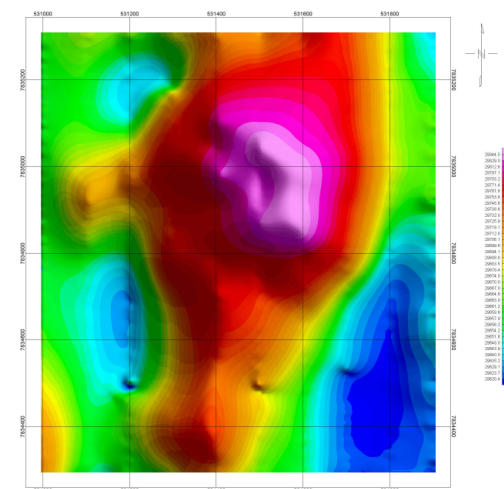
0 20 km



Granted Prospecting Licences



TARGET 4



TARGET 6

