



MOUNT BURGESS MINING N.L.

THE PROSPECTIVITY OF WESTERN NGAMILAND

By Manfred Marx

DIAMONDS AND BASE METALS

BOTSWANA RESOURCE CONFERENCE 2009

Company Details

ACN: 009 067 476

Listed on the Australian Stock Exchange since 1985
Listing Code MTB

Local Asset Status in Botswana granted on 31 October 2007

Issued Share Capital: 320,257,000 shares

Street Address:
Level 4, 109 St Georges Terrace
Perth, Western Australia 6000

Postal Address:
PO Box Z5301 St Georges Terrace
Perth, Western Australia 6831

Tel: +61 8 9322 6311
Fax: +61 8 9322 4607

Email: mtb@mountburgess.com
Website: www.mountburgess.com

Forward Looking Statement

This presentation contains forward looking statements in respect of the projects being reported on by the Company. Forward looking statements are based on beliefs, opinions, assessments and estimates based on facts and information available to management and/or professional consultants at the time they are formed or made and are, in the opinion of management and/or consultants, applied as reasonably and responsibly as possible as at the time that they are applied.

Any statements in respect of mineral reserves, resources and zones of mineralisation may also be deemed to be forward looking statements in that they contain estimates which the Company believes have been based on reasonably probable assumptions in respect of mineralisation that has been found. Exploration targets are conceptual in nature and are formed from projection of the known resource dimensions along strike. The quantity and grade of an exploration target is insufficient to define a Mineral Resource. Forward looking statements are not statements of historical fact, they are based on reasonable projections and calculations, the ultimate results or outcomes of which may differ materially from those described or incorporated in the forward looking statements. Such differences or changes in circumstances to those described or incorporated in the forward looking statements may arise as a consequence of the variety of risks, uncertainties and other factors relative to the exploration and mining industry and the particular properties in which the Company has an interest.

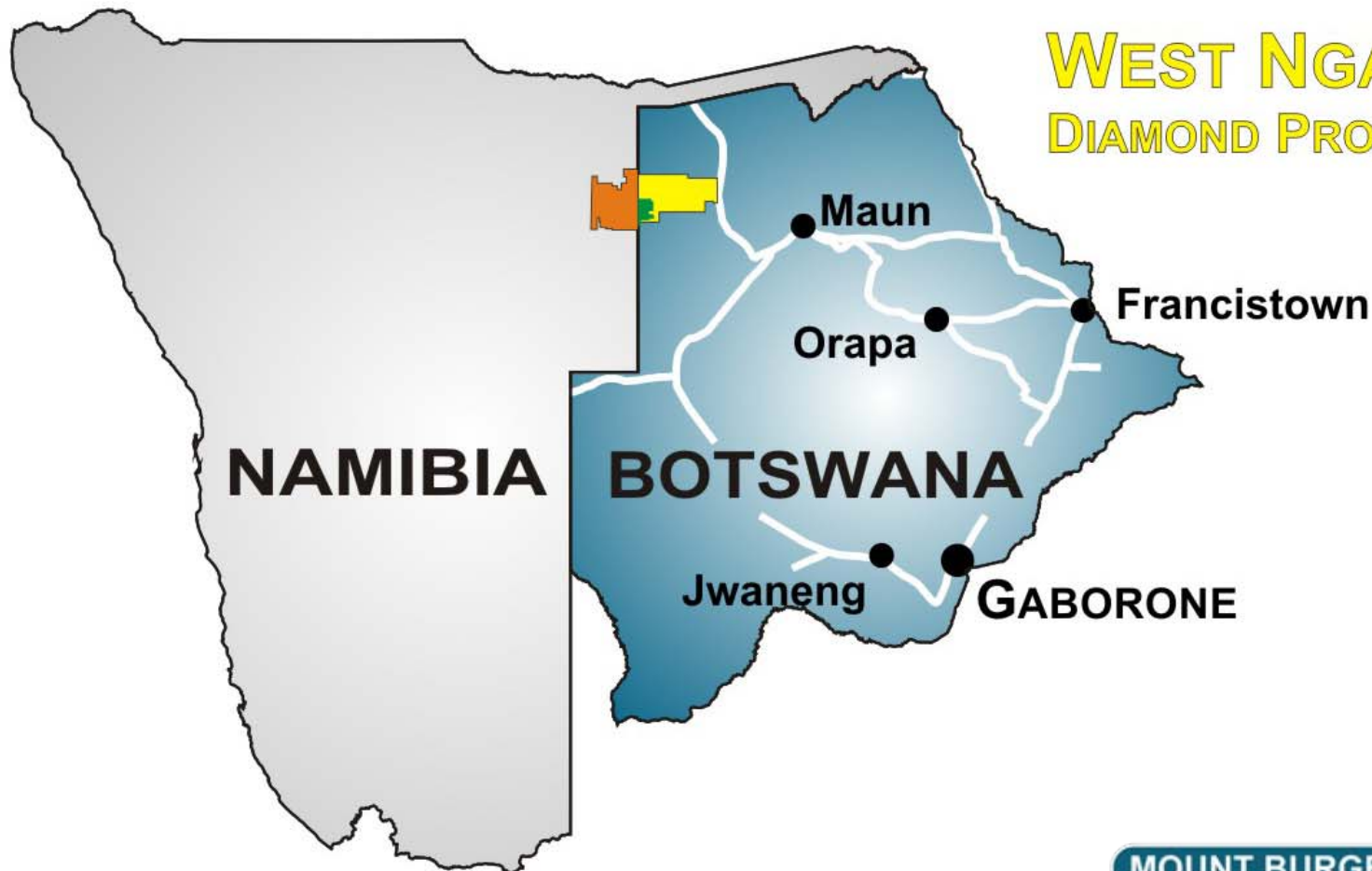
Such risks, uncertainties and other factors could include but would not necessarily be limited to fluctuations in metals and minerals prices, fluctuations in rates of exchange, changes in government policy and political instability in the countries in which the Company operates.

Current Project Locations

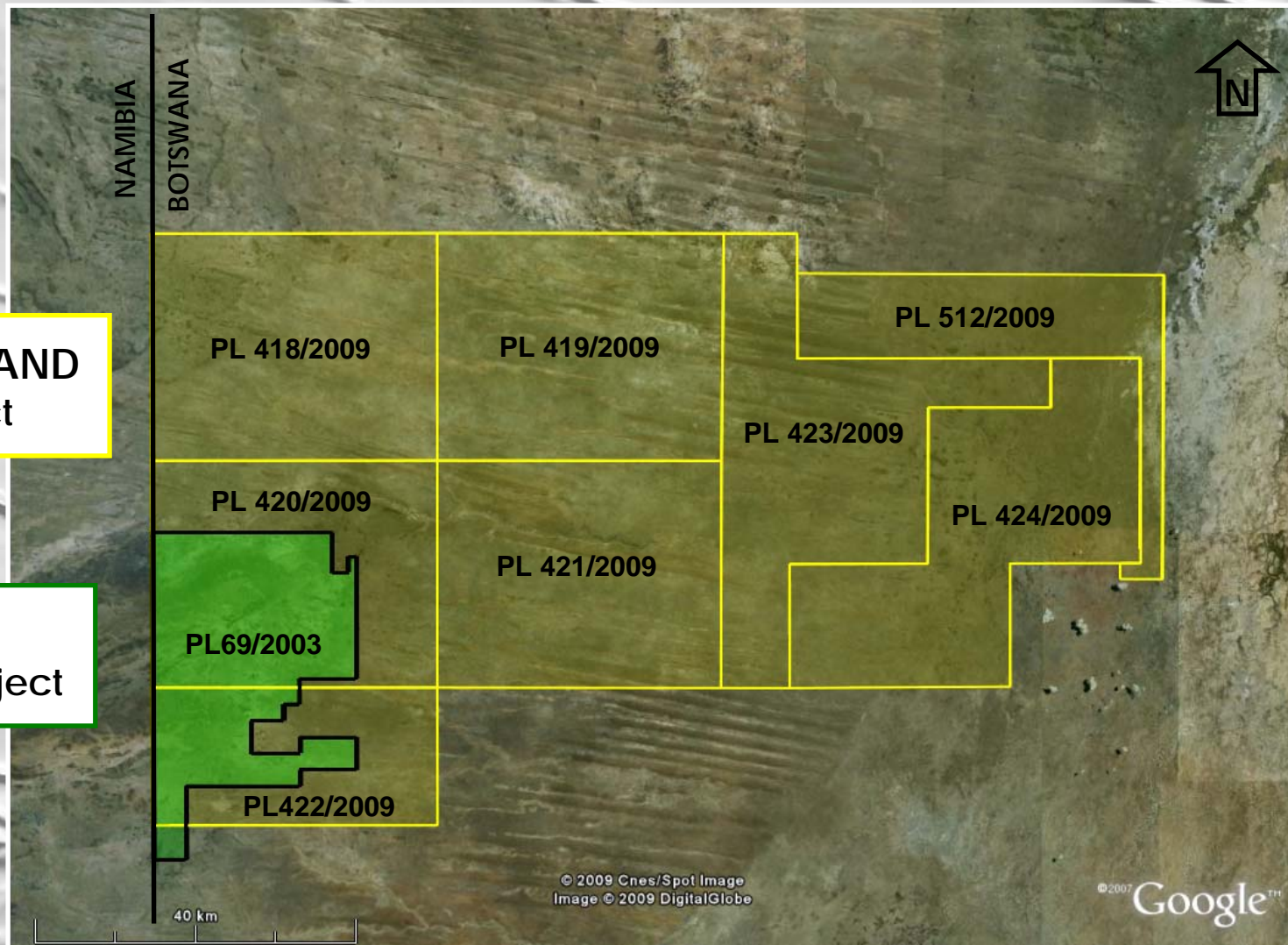
TSUMKWE
DIAMOND PROJECT

KIHABE
BASE METALS PROJECT

WEST NGAMILAND
DIAMOND PROJECT



Current Licences - Botswana

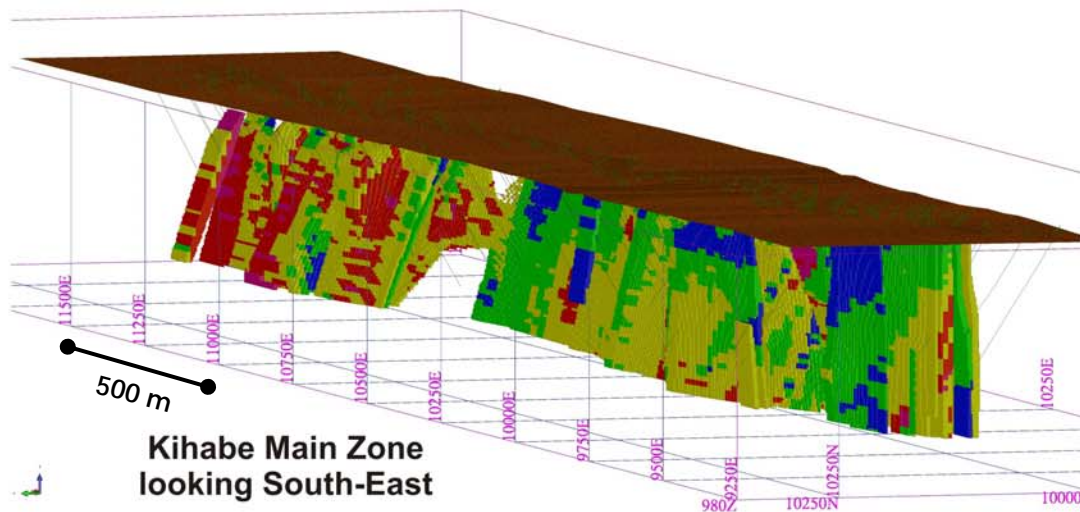
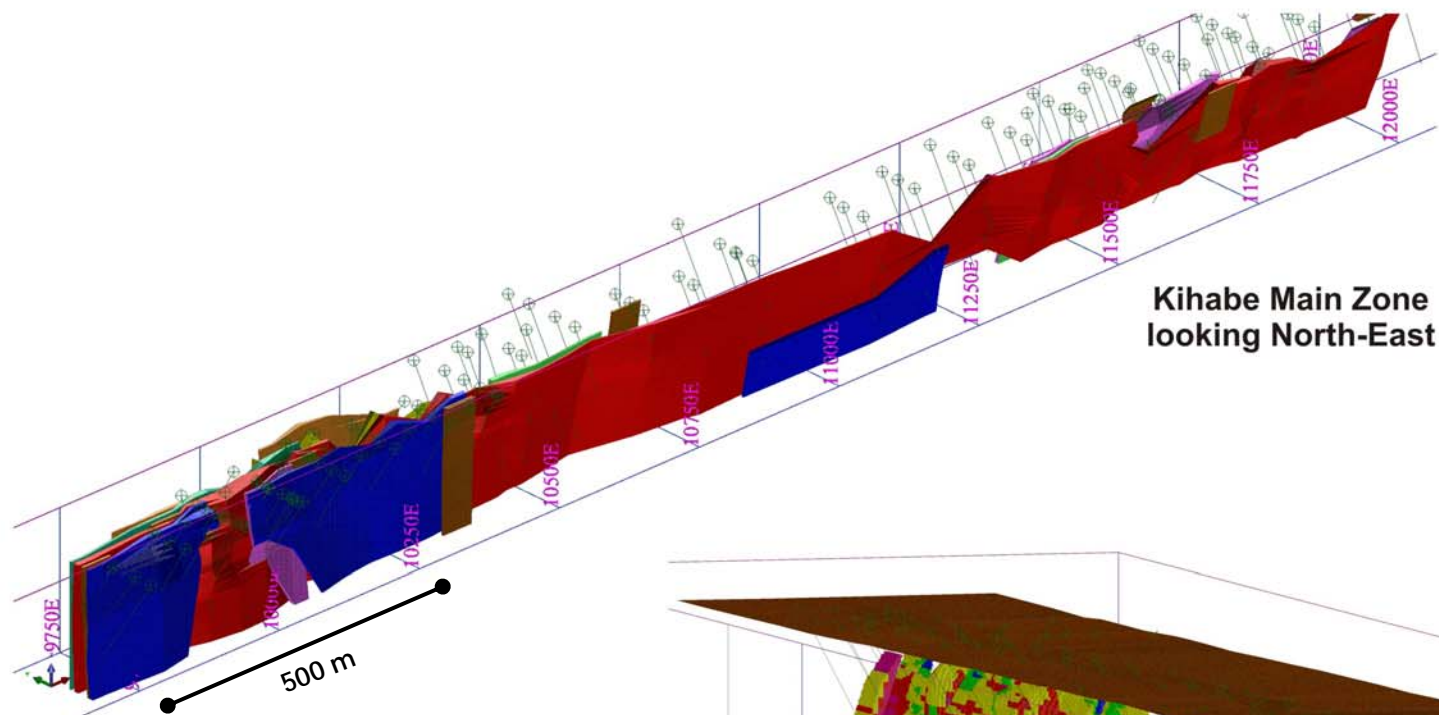


WEST NGAMILAND
Diamond Project

KIHABE
Base Metals Project

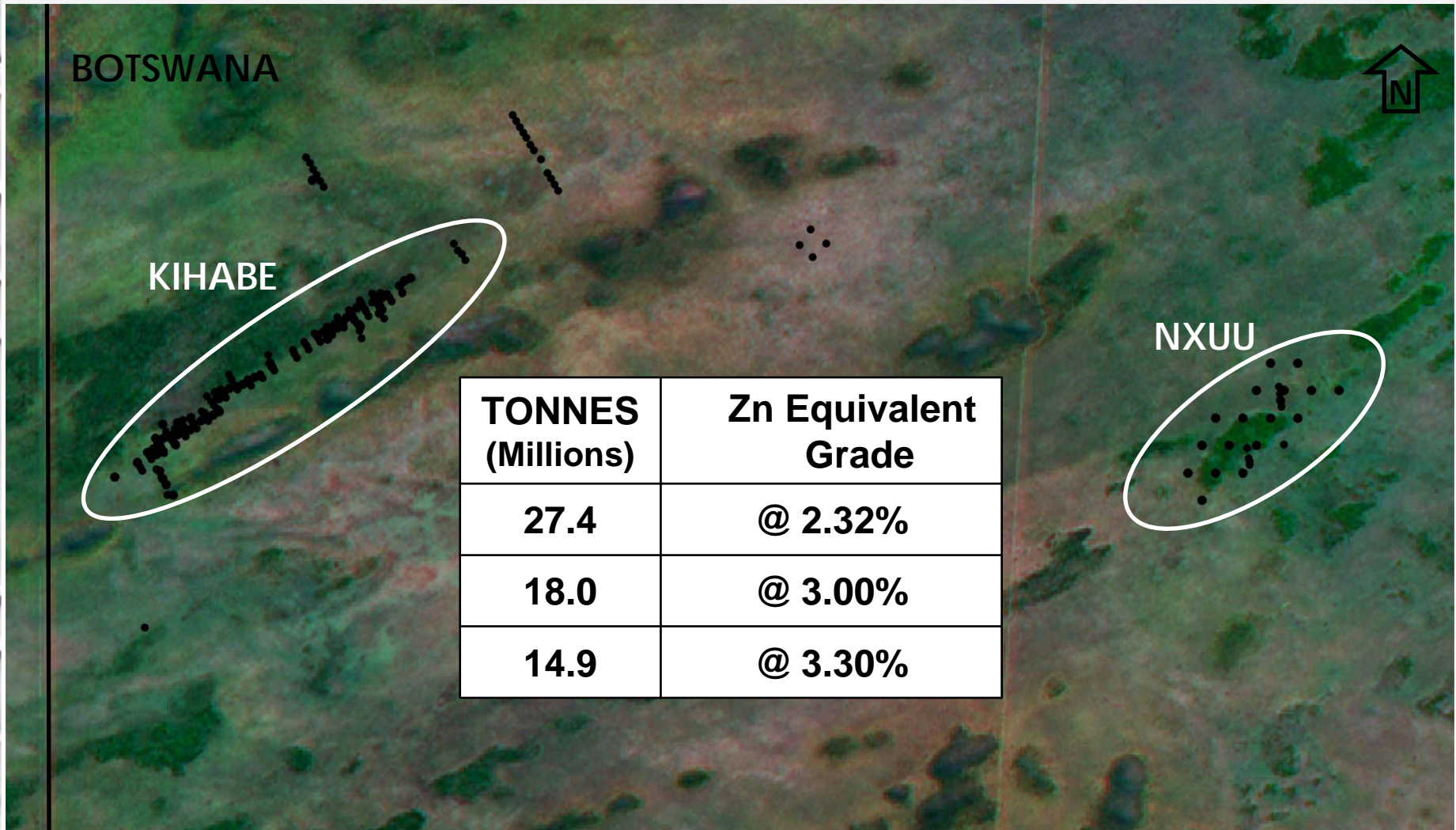
Mineralised Wireframes

Kihabe Base Metals Project, Botswana
Zinc Lead & Silver



Combined Kihabe and Nxuu Resource

Kihabe Base Metals Project, Botswana
Zinc Lead & Silver



Zn Equivalent Grade is based on Prices used in the Resource Estimation, namely Zn @ US\$1810/t and Pb @ US\$1955/t as at July 2008.

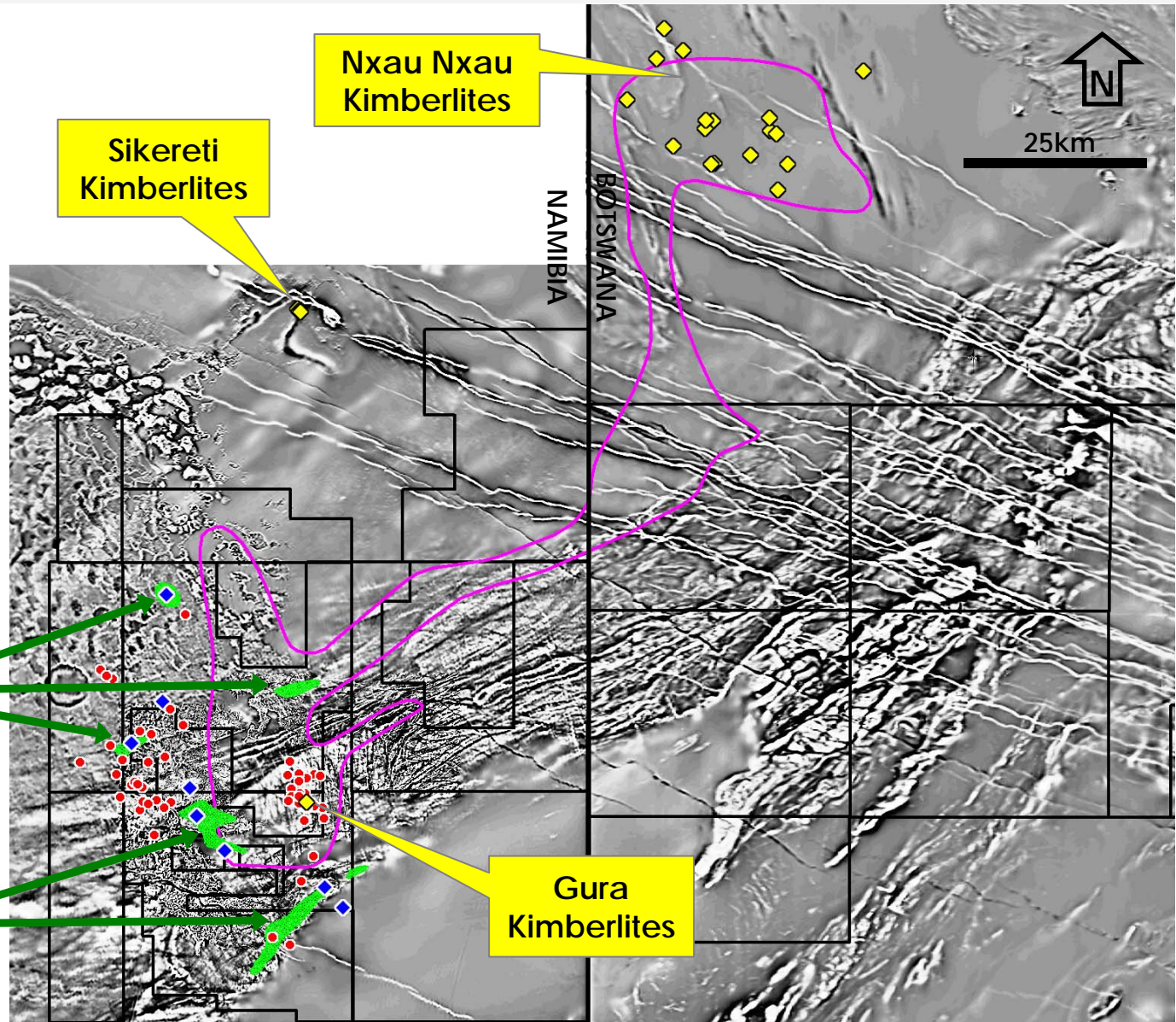
MOUNT BURGESS MINING N.L.

Diamond Exploration Project

Tsumkwe, Namibia

LEGEND

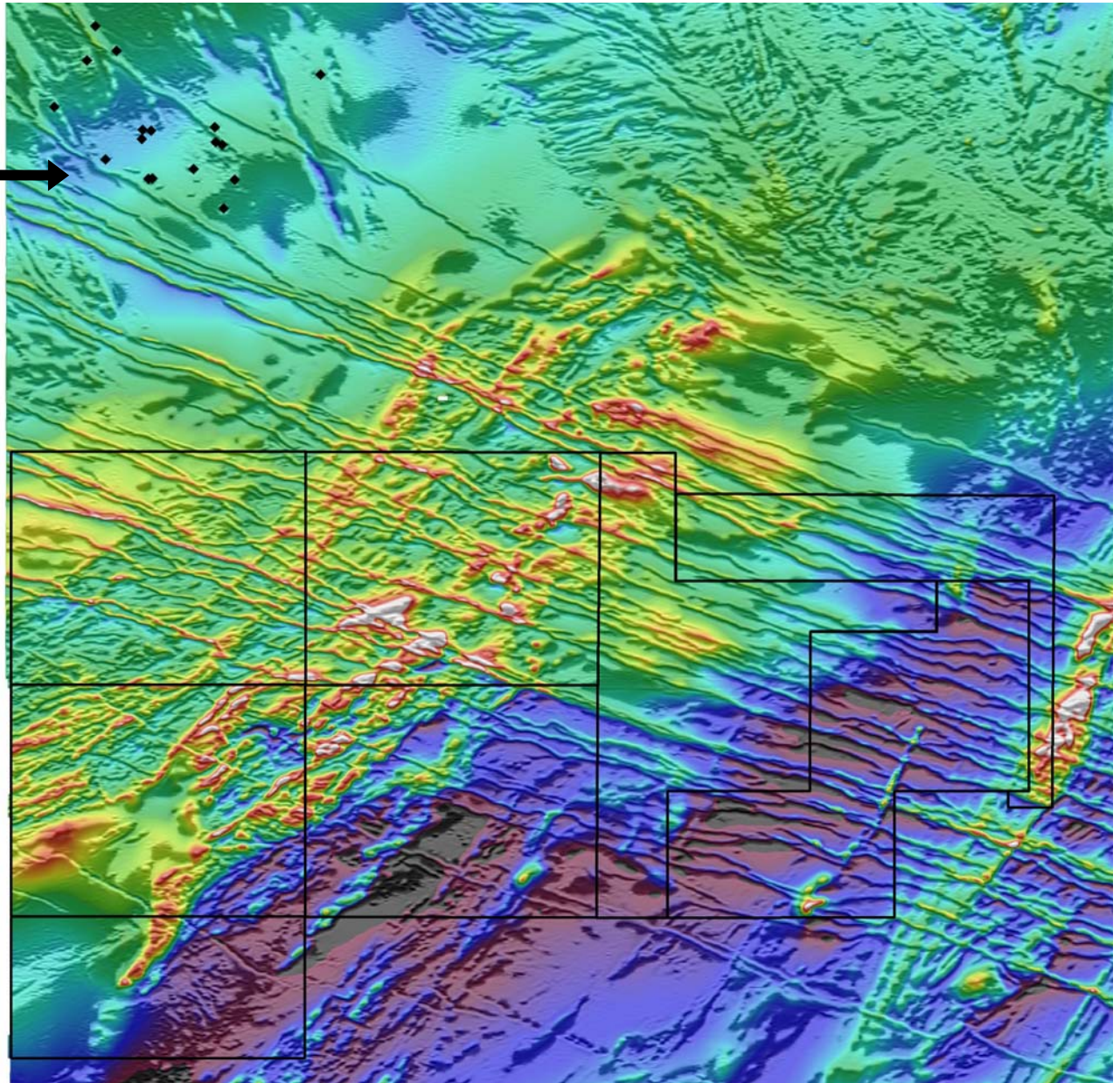
- Known Kimberlites
- Recovered Diamonds
- Class 4 Garnets from drilling
- G10 Garnet Cluster from loam sampling and drilling
- Possible Rift Valley



Aeromagnetics

West Ngamiland Diamond Project

Nxau Nxau
Kimberlites



MTB Licences



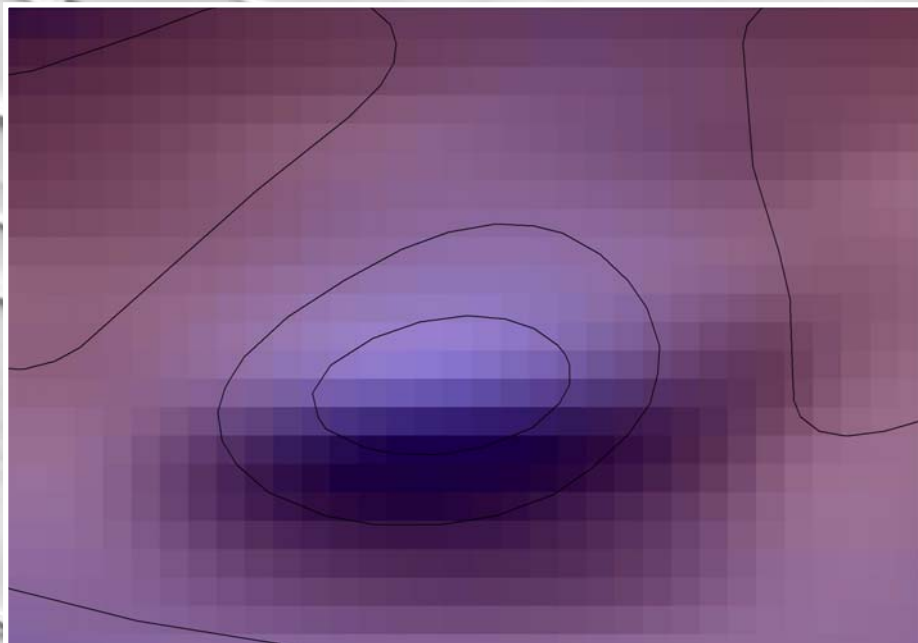
20km



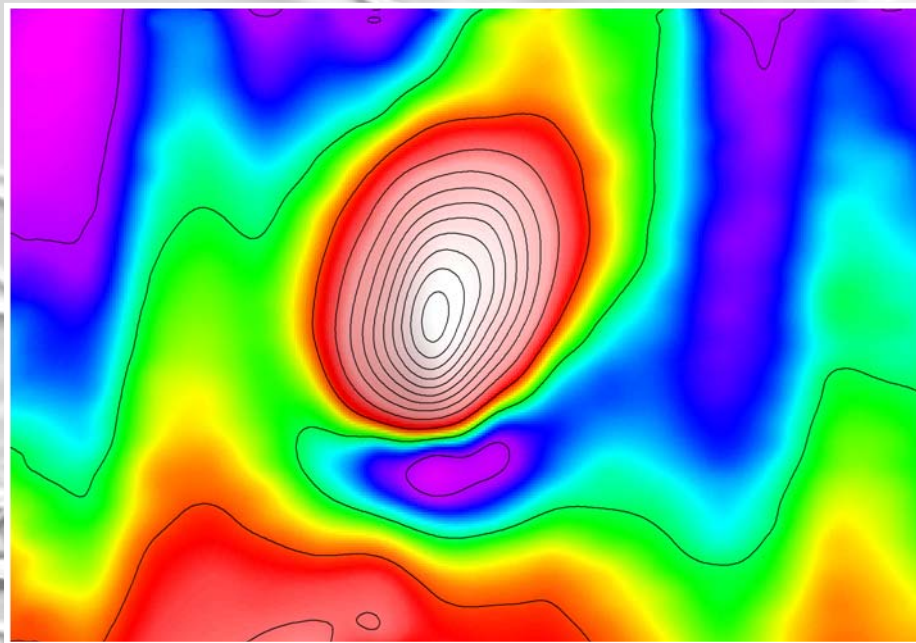
Target 60

West Ngamiland Diamond Project

TMI Aeromag



Ground Mag

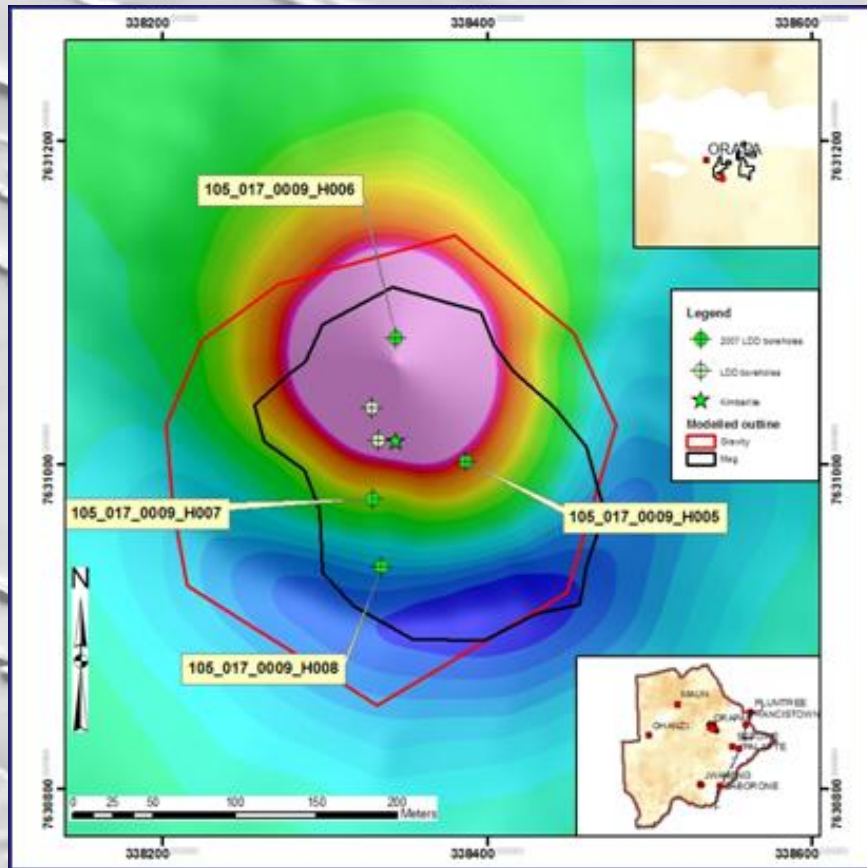


0 500 metres

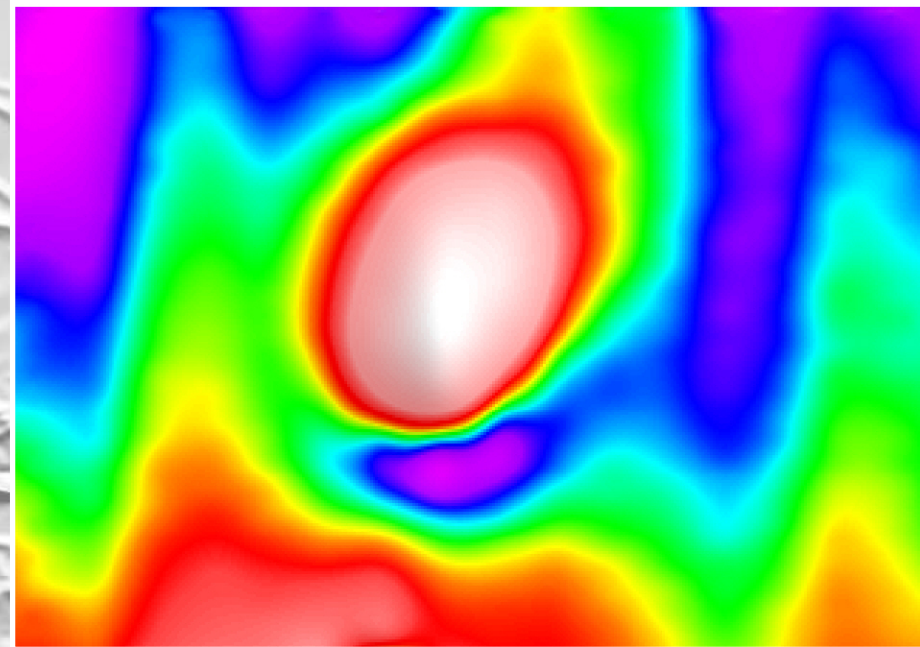
MOUNT BURGESS MINING N.L.

Magnetic Signature Comparison

AFRICAN DIAMONDS
AK9 Kimberlite



MOUNT BURGESS MINING
Target 60



0 500 metres

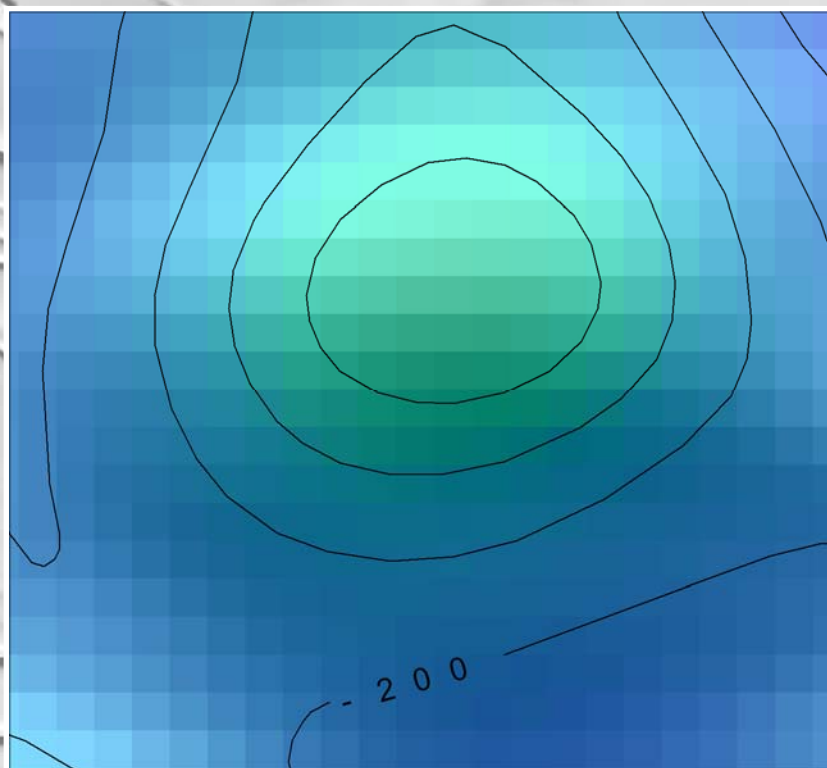
With kind permission: AFRICAN DIAMONDS PLC

MOUNT BURGESS MINING N.L.

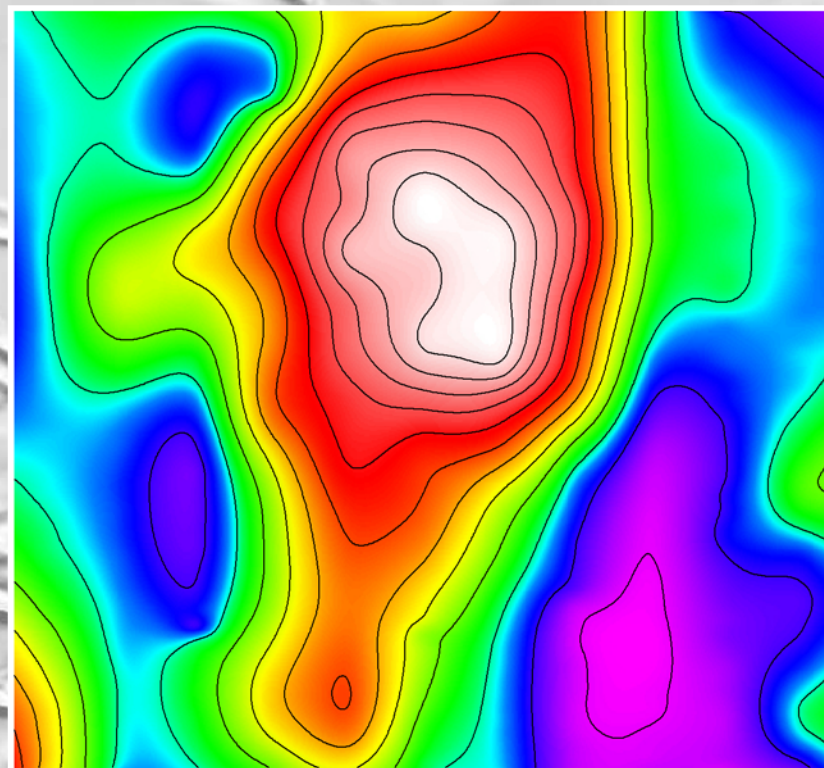
Target 4

West Ngamiland Diamond Project

TMI Aeromag



Ground Mag

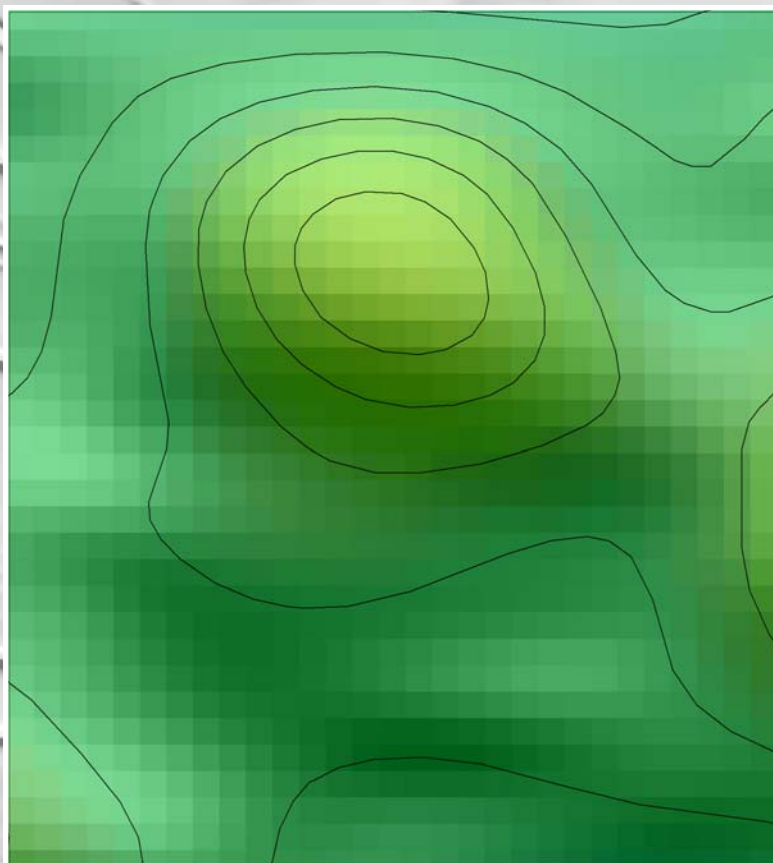


0 500 metres

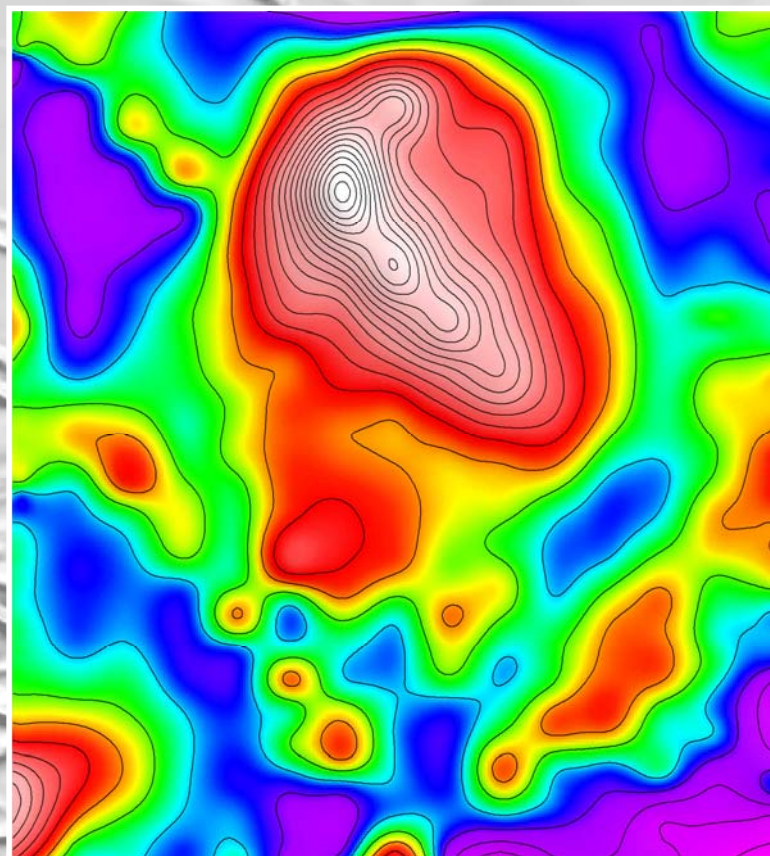
Target 6

West Ngamiland Diamond Project

TMI Aeromag



Ground Mag

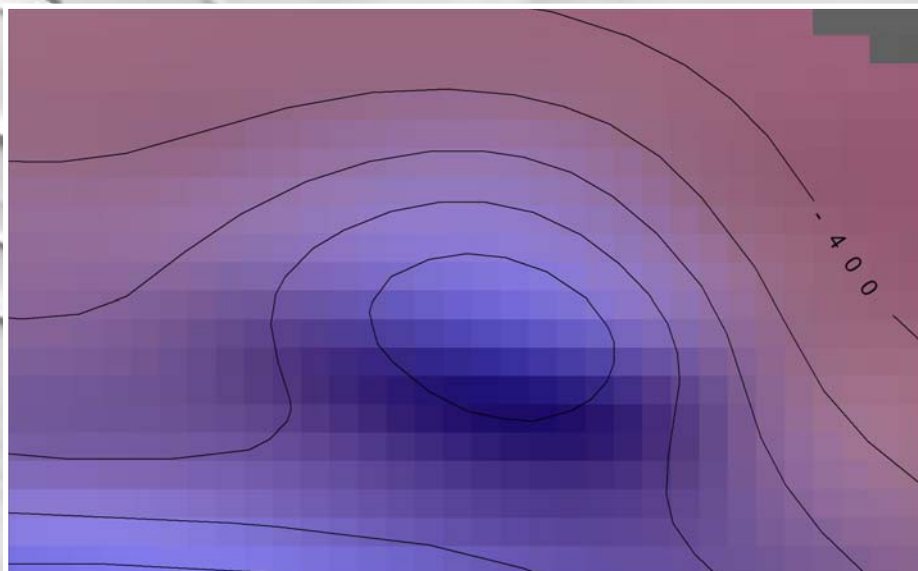


0 500 metres

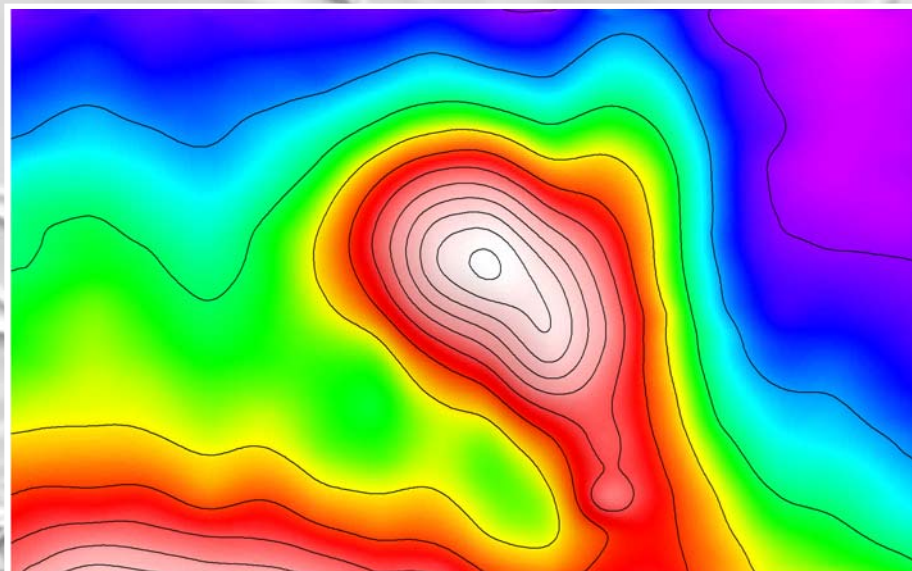
Target 62

West Ngamiland Diamond Project

TMI Aeromag



Ground Mag

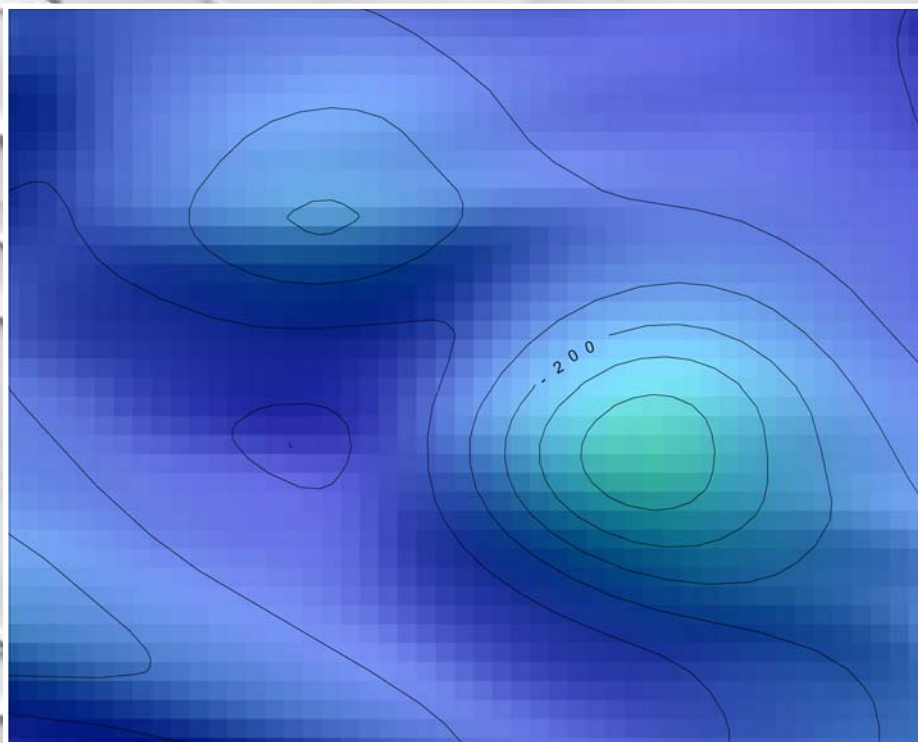


0 500 metres

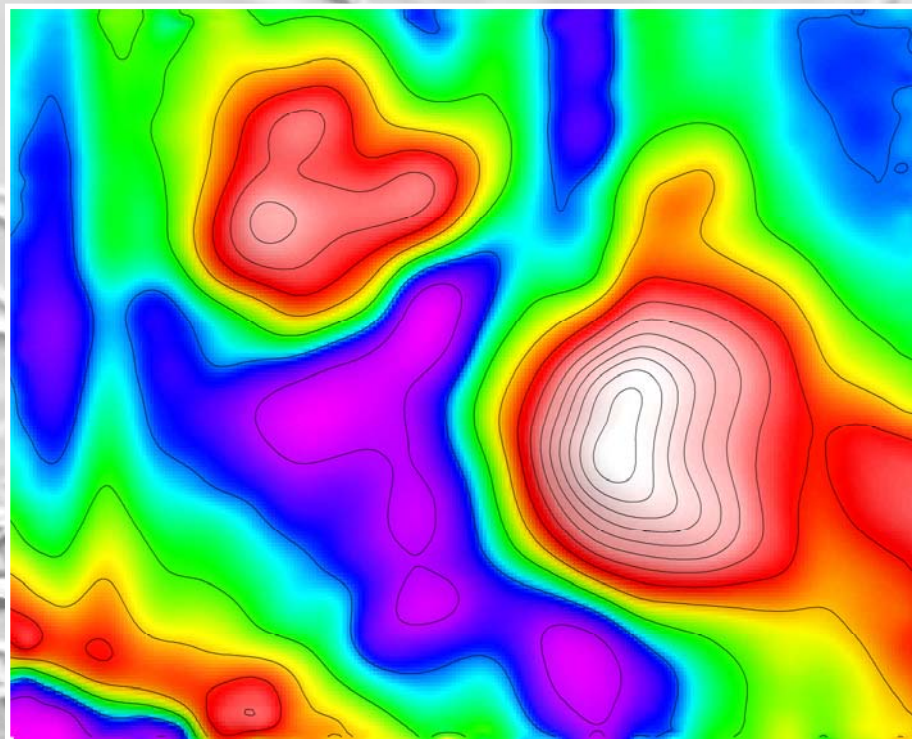
Targets 68 & 69

West Ngamiland Diamond Project

TMI Aeromag



Ground Mag



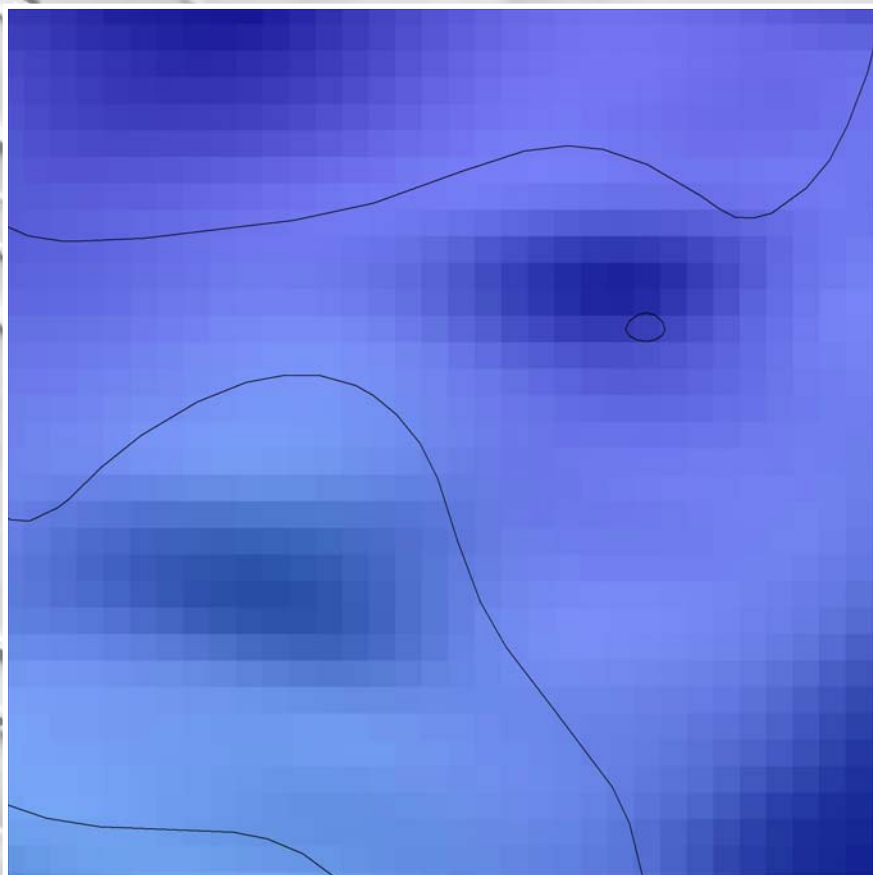
0 500 metres

MOUNT BURGESS MINING N.L.

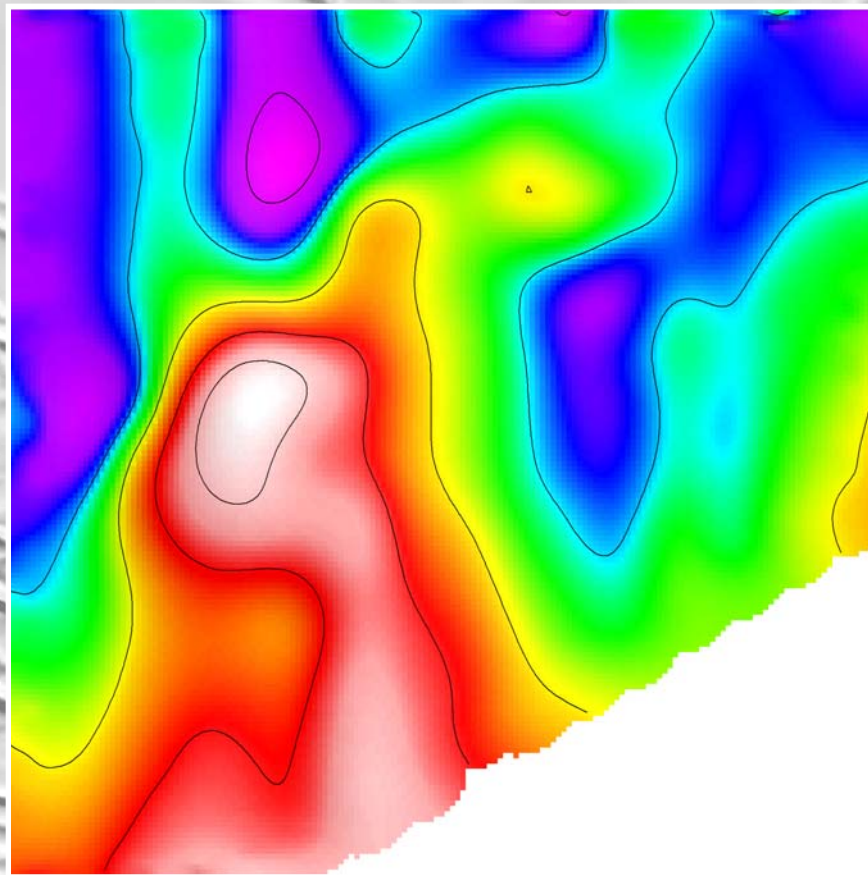
Target 70

West Ngamiland Diamond Project

TMI Aeromag



Ground Mag



0 500 metres

MOUNT BURGESS MINING N.L.

MTB Exploration Team

Botswana Projects

Ben Mosigi, B.Sc., M.Sc.

Camille Cooper, B.Sc.

Rodney Moagi, B.Sc.

Hank Abotseng, B.Sc.

Moss Taunyane

Director of Exploration

GIS Manager

Geologist

Geologist

Field Operations Manager

PROJECT CONSULTANTS:

Manfred Marx, B.Sc.

M R Marx & Associates

Consulting Geologist

Bill Peters, B.Sc.(Hons)

Southern Geoscience Consultants

Geophysicist - Australia

Bill McLellan, B.Sc.(Hons)

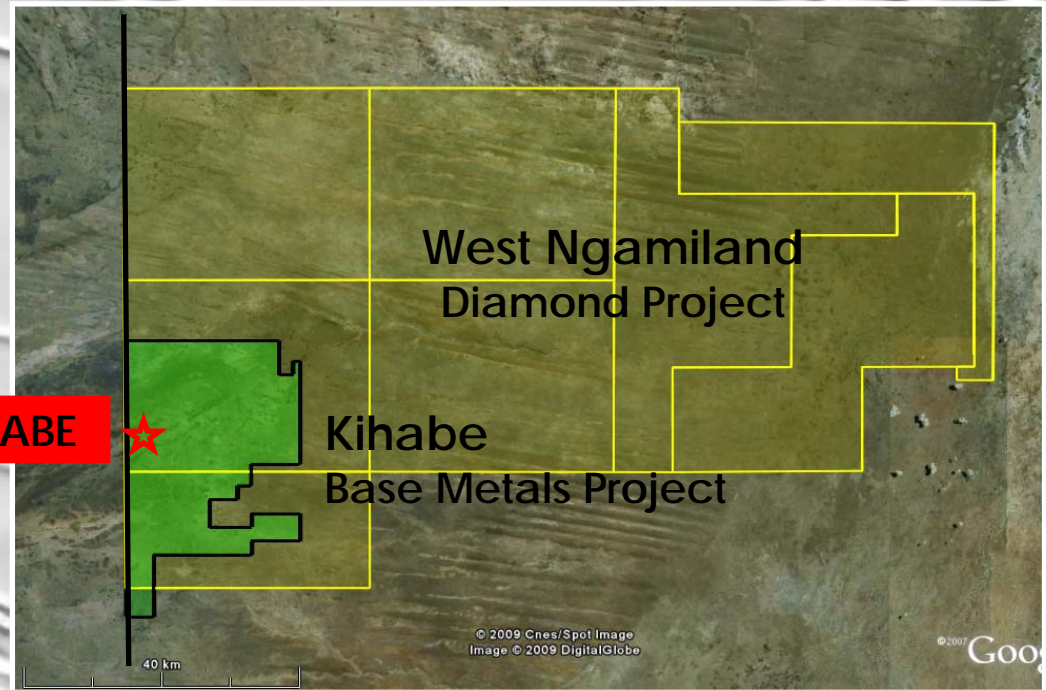
Poseidon Geophysics

Geophysicist - Botswana

Kihabe Camp



KIHABE



MOUNT BURGESS MINING N.L.