



ANNUAL GENERAL MEETING

6th NOVEMBER 2008

Company Details

ACN: 009 067 476

Listed on the Australian Stock Exchange since 1985
Listing Code MTB

Local Asset Status in Botswana granted on 31 October 2007

Issued Share Capital: 320,257,000 shares

Street Address:
Level 4, 109 St Georges Terrace
Perth, Western Australia 6000

Postal Address:
PO Box Z5301 St Georges Terrace
Perth, Western Australia 6831

Tel: +61 8 9322 6311
Fax: +61 8 9322 4607

Email: mtb@mountburgess.com
Website: www.mountburgess.com

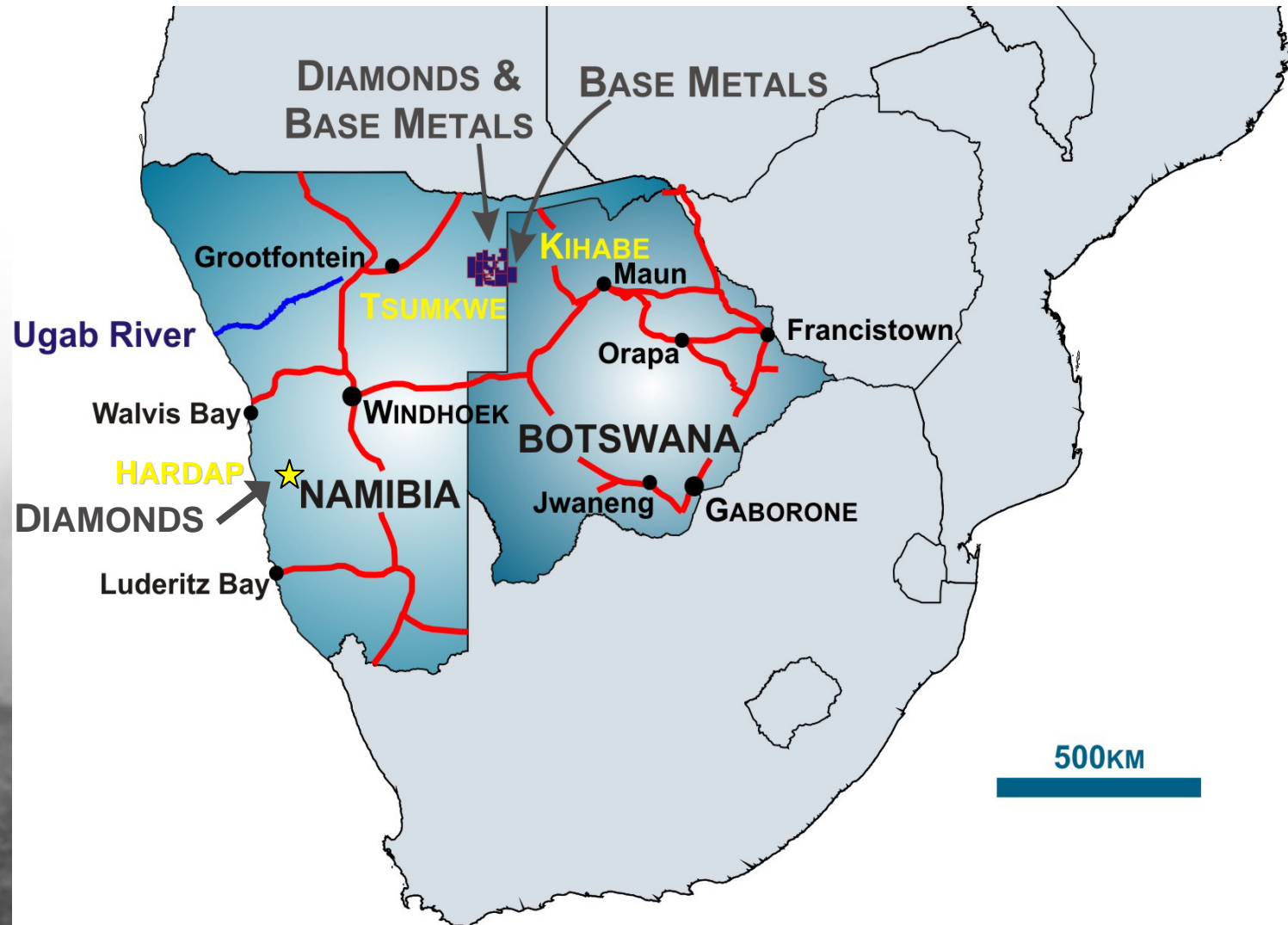
Forward Looking Statement

This presentation contains forward looking statements in respect of the projects being reported on by the Company. Forward looking statements are based on beliefs, opinions, assessments and estimates based on facts and information available to management and/or professional consultants at the time they are formed or made and are, in the opinion of management and/or consultants, applied as reasonably and responsibly as possible as at the time that they are applied.

Any statements in respect of mineral reserves, resources and zones of mineralisation may also be deemed to be forward looking statements in that they contain estimates which the Company believes have been based on reasonably probable assumptions in respect of mineralisation that has been found. Exploration targets are conceptual in nature and are formed from projection of the known resource dimensions along strike. The quantity and grade of an exploration target is insufficient to define a Mineral Resource. Forward looking statements are not statements of historical fact, they are based on reasonable projections and calculations, the ultimate results or outcomes of which may differ materially from those described or incorporated in the forward looking statements. Such differences or changes in circumstances to those described or incorporated in the forward looking statements may arise as a consequence of the variety of risks, uncertainties and other factors relative to the exploration and mining industry and the particular properties in which the Company has an interest.

Such risks, uncertainties and other factors could include but would not necessarily be limited to fluctuations in metals and minerals prices, fluctuations in rates of exchange, changes in government policy and political instability in the countries in which the Company operates.

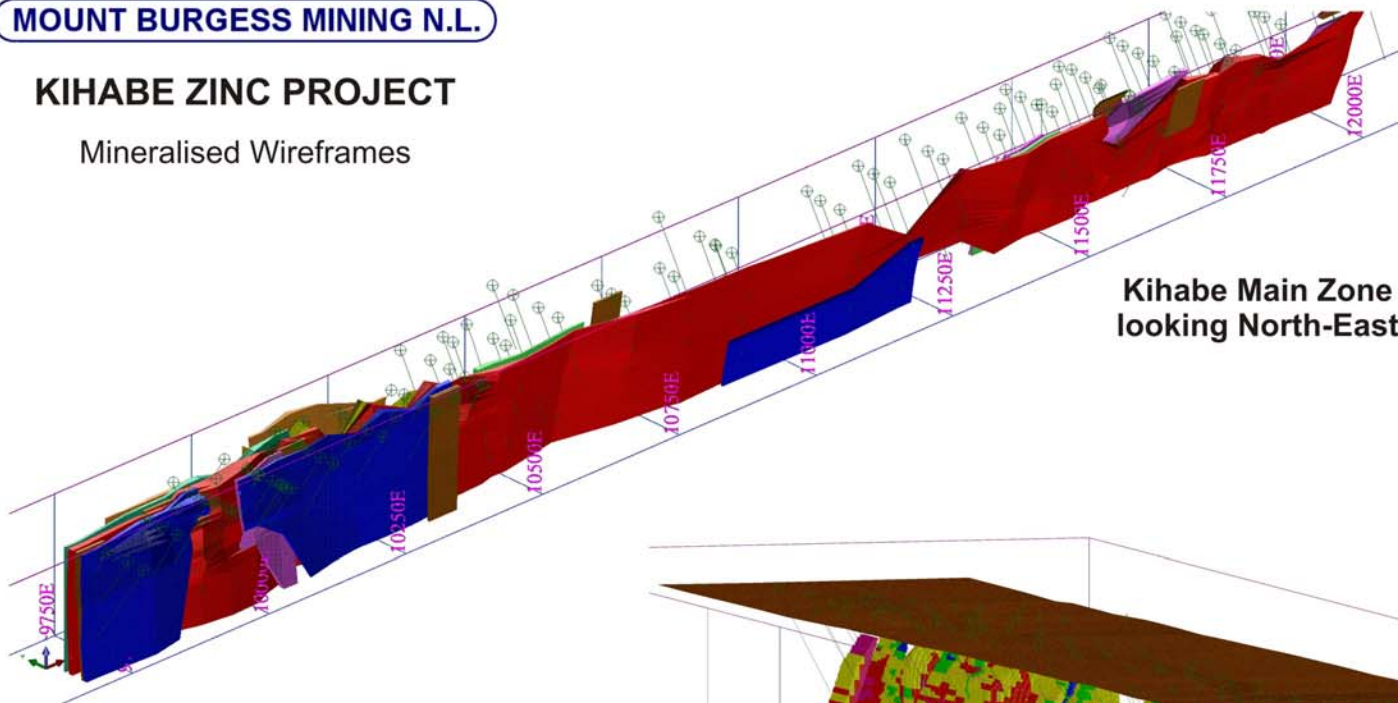
African Project Locations



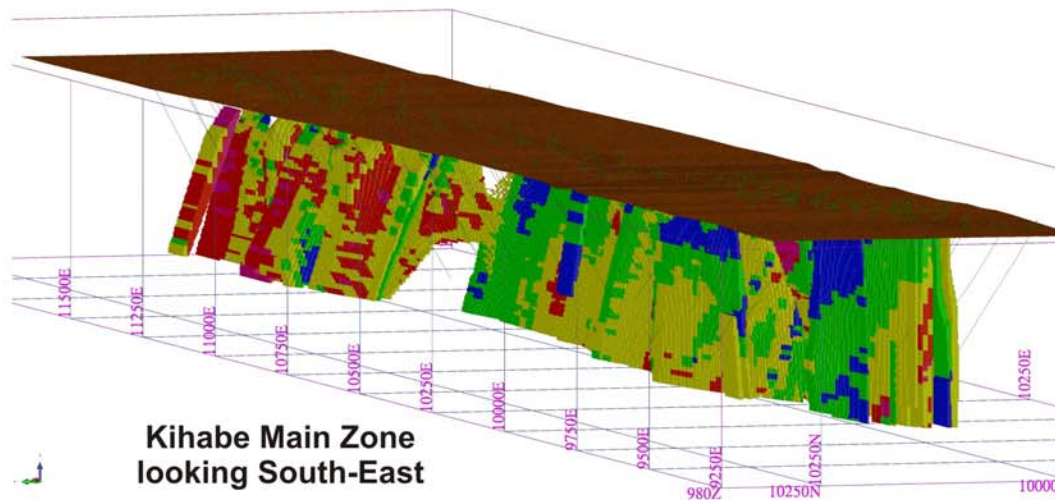
MOUNT BURGESS MINING N.L.

KIHABE ZINC PROJECT

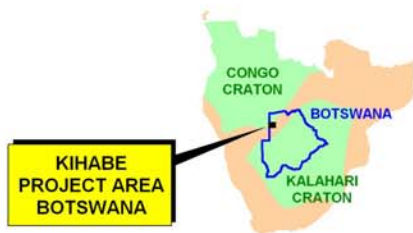
Mineralised Wireframes



**Kihabe Main Zone
looking North-East**



**Kihabe Main Zone
looking South-East**



Kihabe Deposit, Botswana

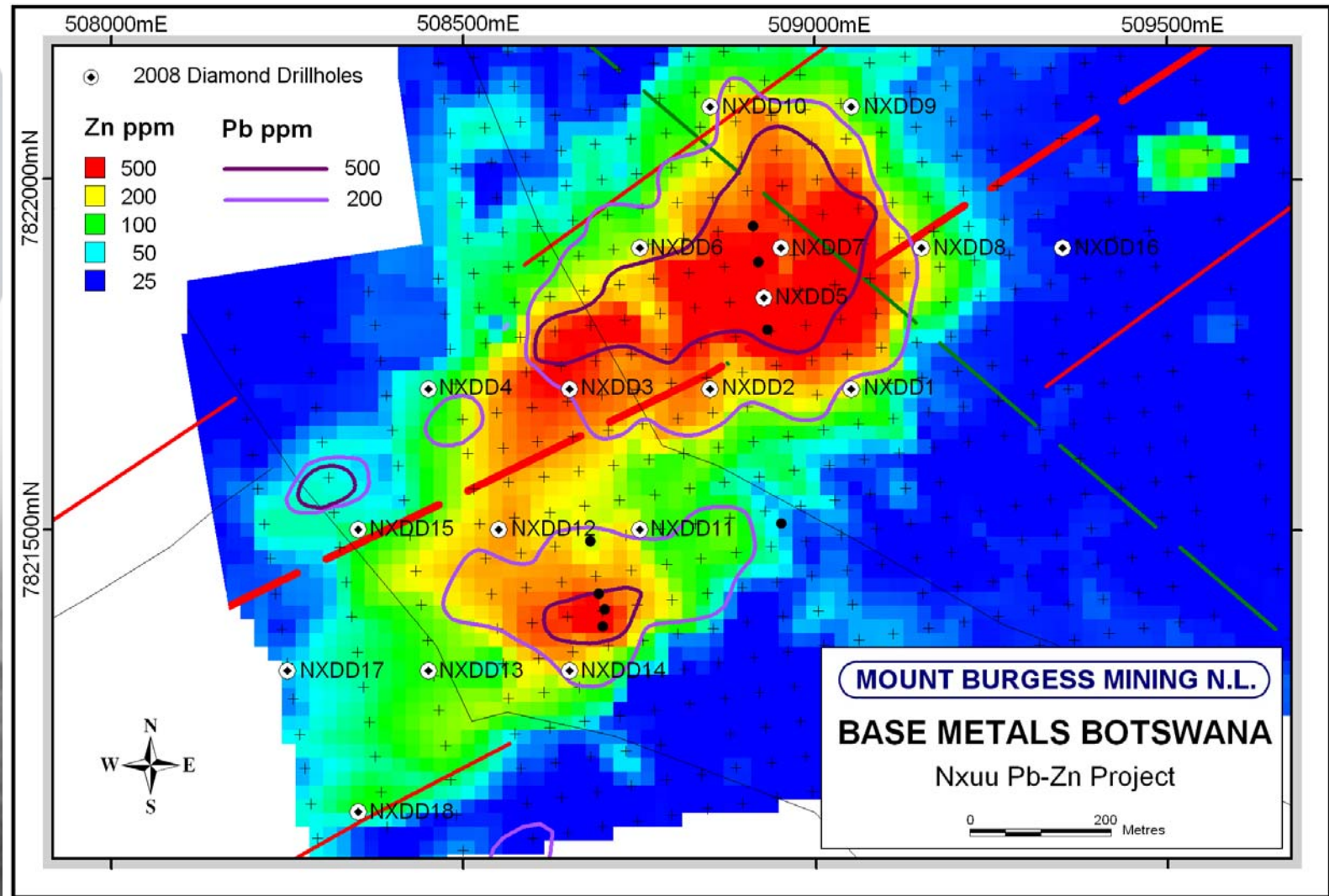
Resource Estimation

Cut-off Zn Equivalent	Tonnes	Zn %	Pb %	Ag (g/t)	Zn Equivalent
0.5	22,000,000	1.4	0.6	5.9	2.2
1.0	18,200,000	1.6	0.7	6.8	2.5
1.5	14,400,000	1.8	0.8	7.7	2.8
2.0	10,400,000	2.0	0.9	9.2	3.3

- Calculated at the prices ruling on the 17th July this year, namely US\$1,810 / t for Zn, US\$1,955 / t for Lead, US\$18.70 per ounce for Silver. This is a combined Indicated and Inferred Resource at a ratio of around 1:3.

Nxuu Deposit, Botswana

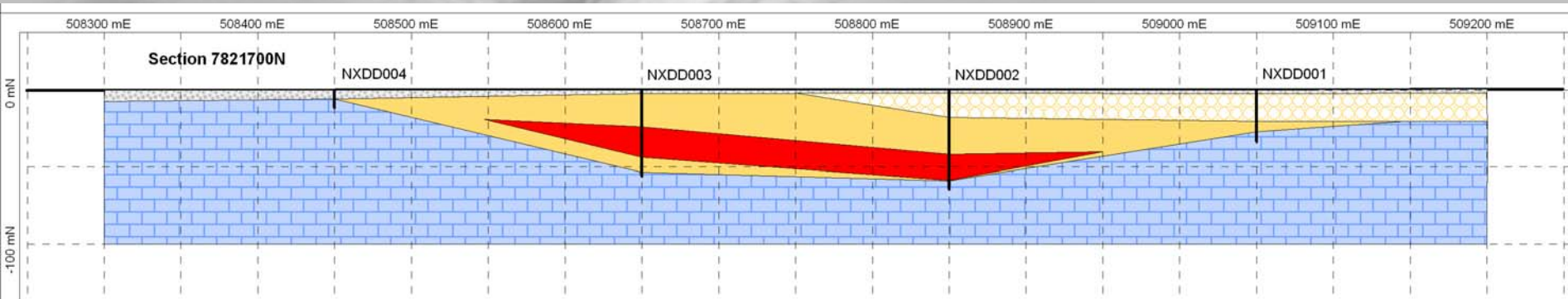
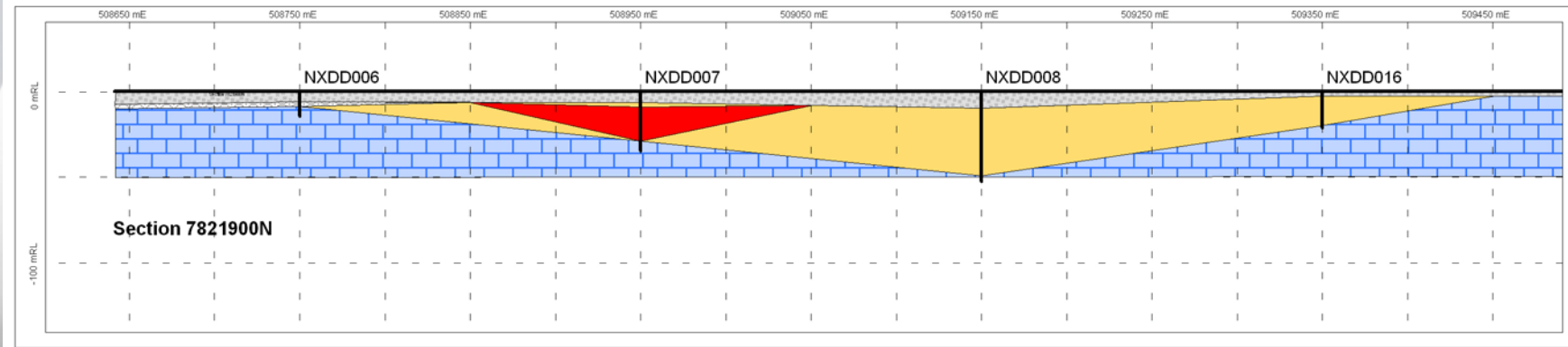
Drilling to Date



Nxuu Pb-Zn Deposit, Botswana

Section 7821700N and 7821900N

- Central X-sections of the Nxuu Deposit
- Synclinal structure showing Pb-Zn in red



Nxuu Deposit, Botswana

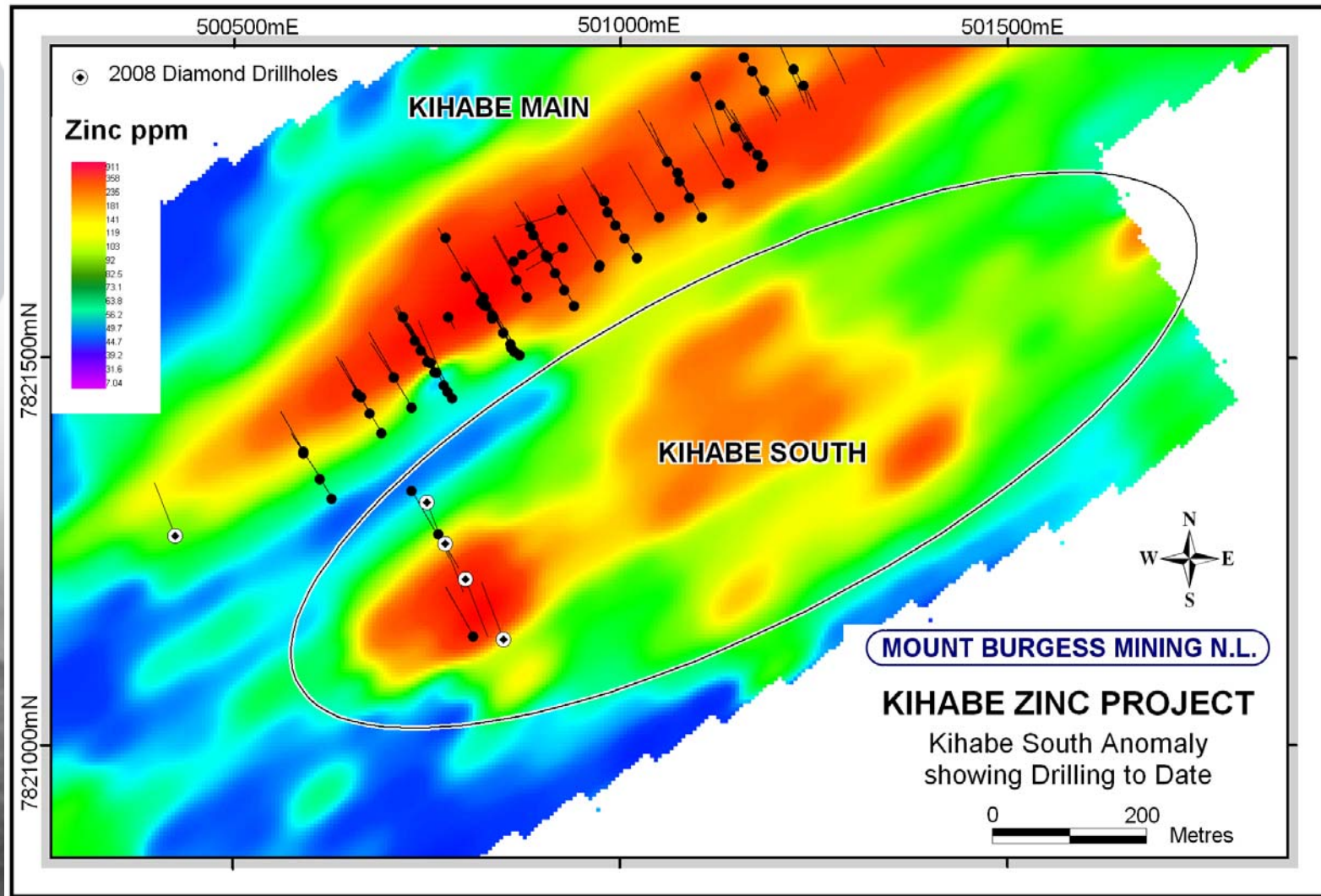
Resource Estimation

Drill Section External Cut-off	Tonnes (millions)	Zn Grade (%)	Pb Grade (%)	Zn Equivalent Grade
0.5% Zn	5.4	1.80	0.93	2.81%
1.0% Zn	4.5	2.08	1.00	3.16%
1.5% Zn	3.7	2.36	1.11	3.56%

- Calculated at the prices ruling on the 17th July this year, namely US\$1,810 / t for Zn and US\$1,955 / t for Lead.
- This is an Inferred Resource

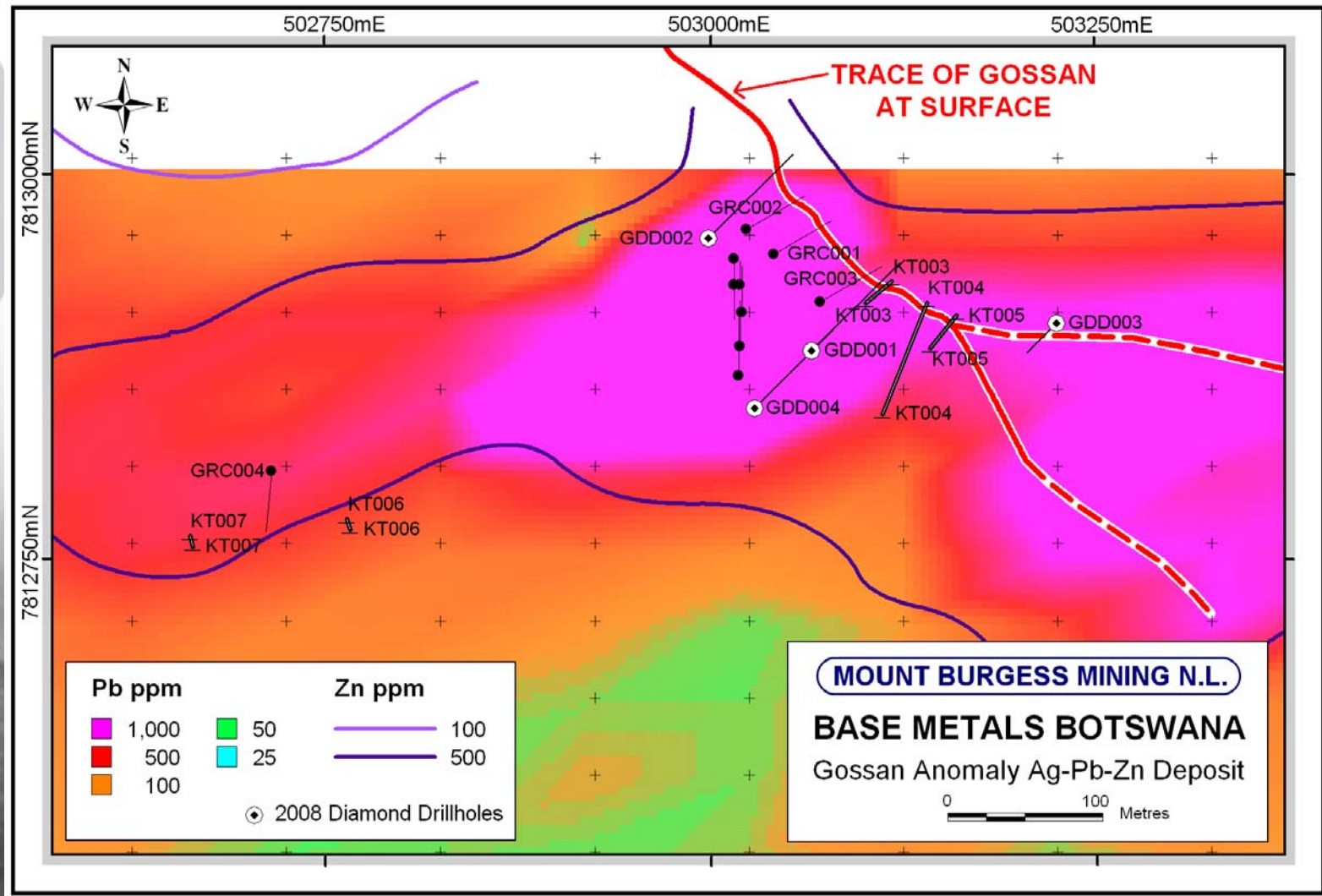
Kihabe South Anomaly, Botswana

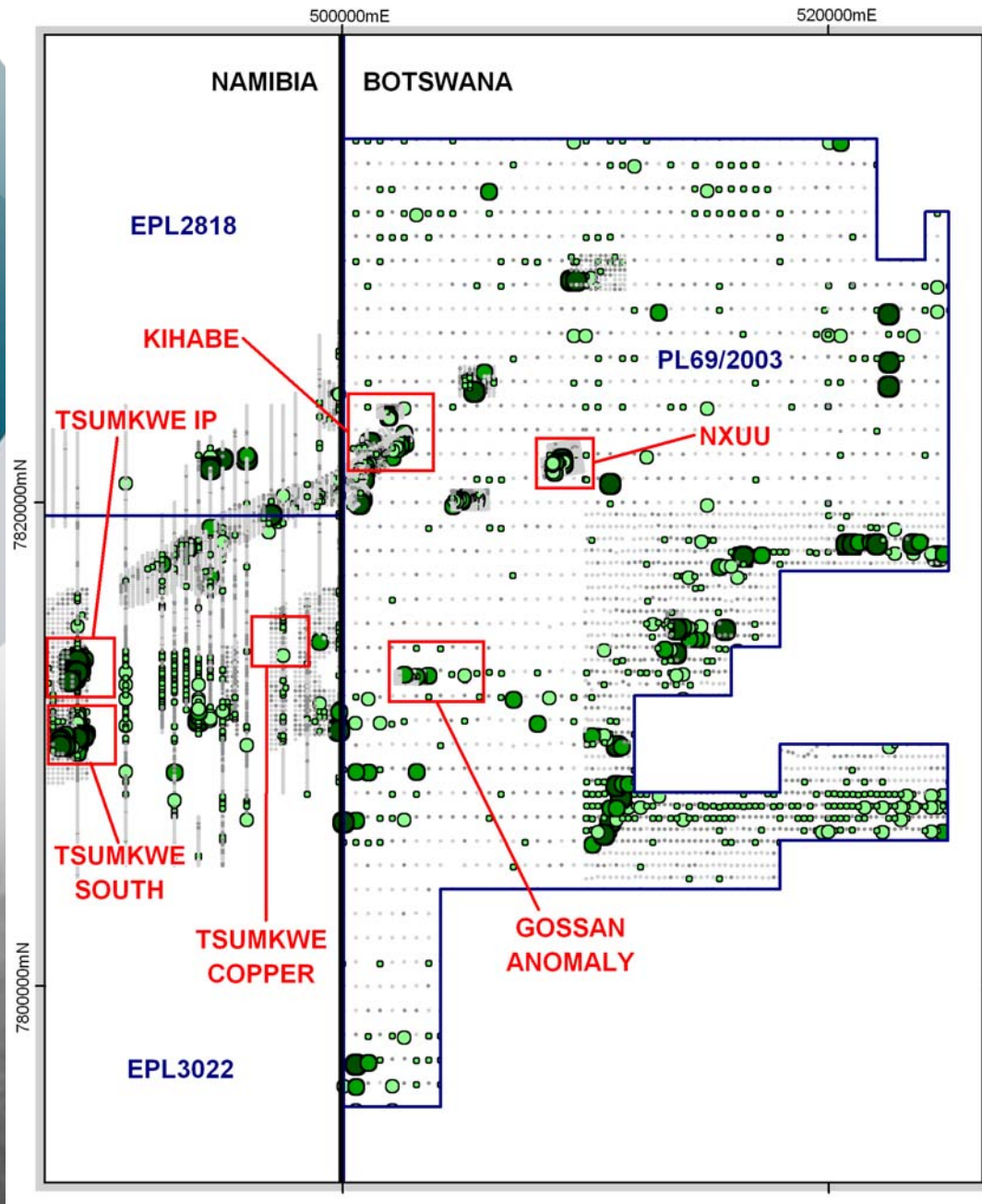
Drilling to Date



Gossan Anomaly, Botswana

Drilling to Date





Base Metals Project Namibia and Botswana

- Showing adjusted Z scores for Zinc

0 10km

Adjusted Zn Z-Score

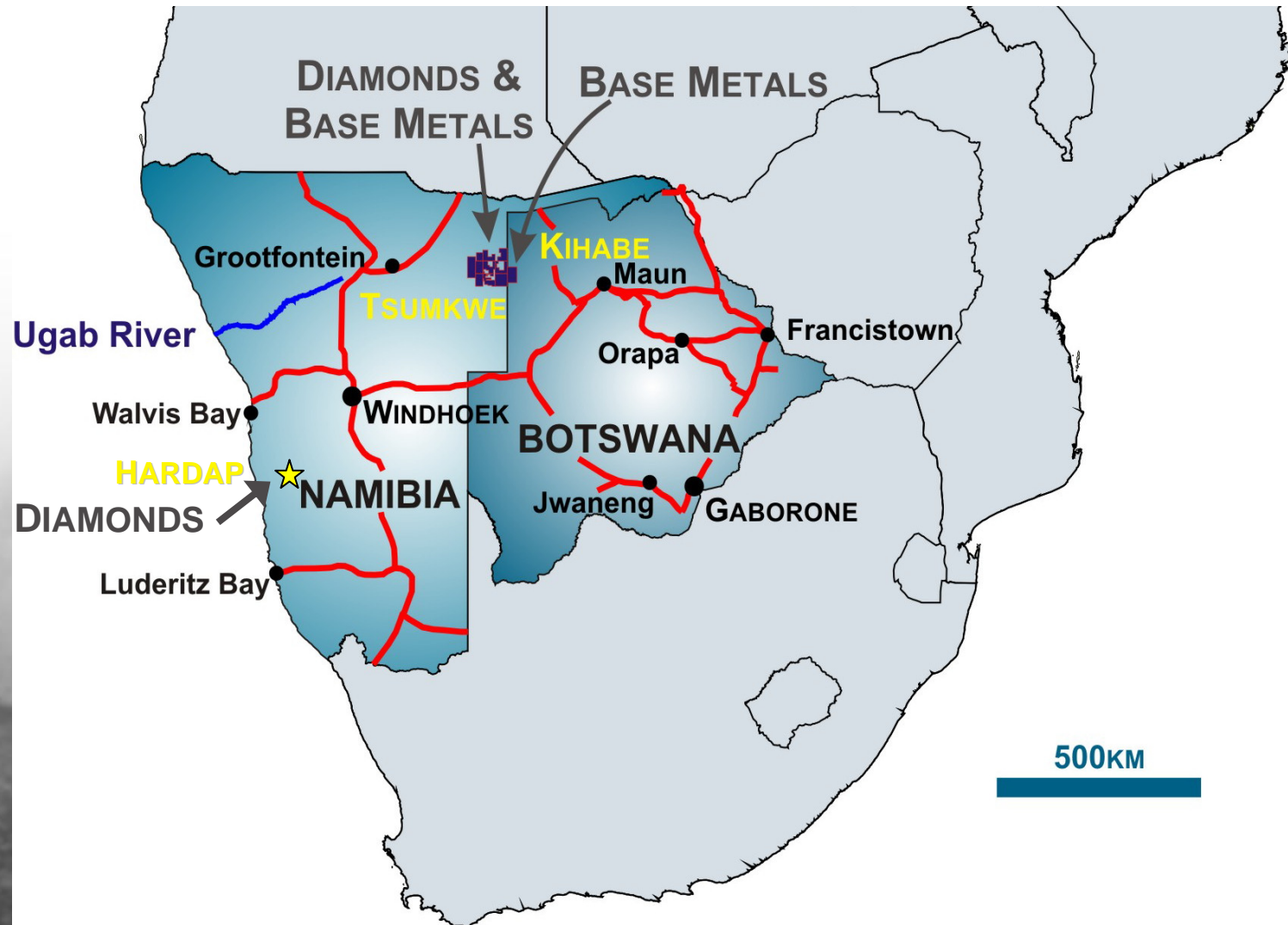
●	3 to 8	(109)
●	2.5 to 3	(120)
●	2 to 2.5	(221)
●	1 to 2	(1464)
●	0 to 1	(3666)
●	-4.4 to 0	(7024)

Combined Kihabe and Nxuu Resource

TONNES	Zn Equivalent Grade
27.4	2.32%
18.0	3.00%
14.9	3.30%

- Zn Equivalent Grade is based on Prices used in the Resource Estimation, namely Zn @ US\$1810/t and Pb @ US\$1955/t

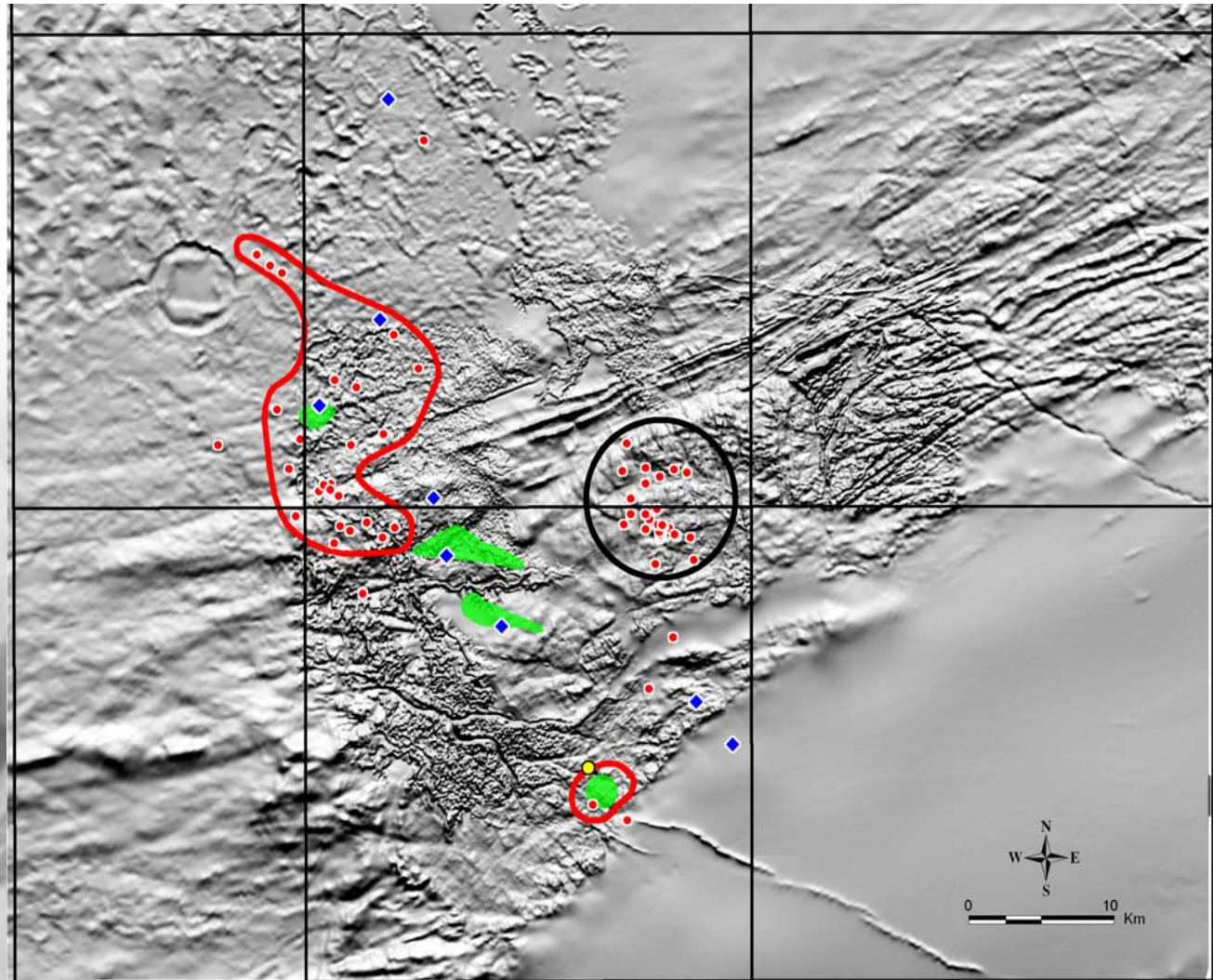
African Project Locations



Tsumkwe Diamond Project, Namibia

Kimberlite Target Areas

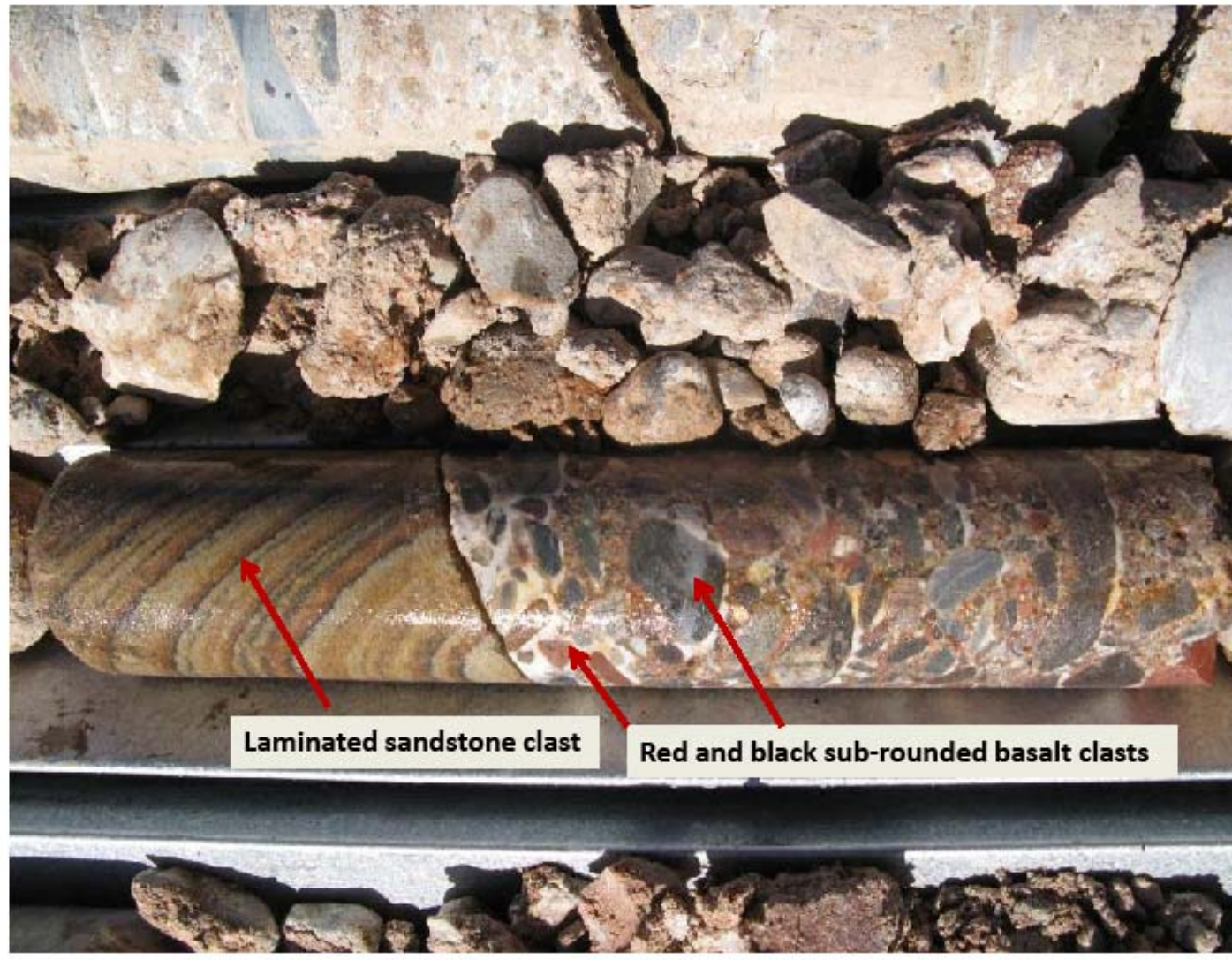
- Approximately 7693km² of MTB ground holdings cover the whole area of diamond anomalies



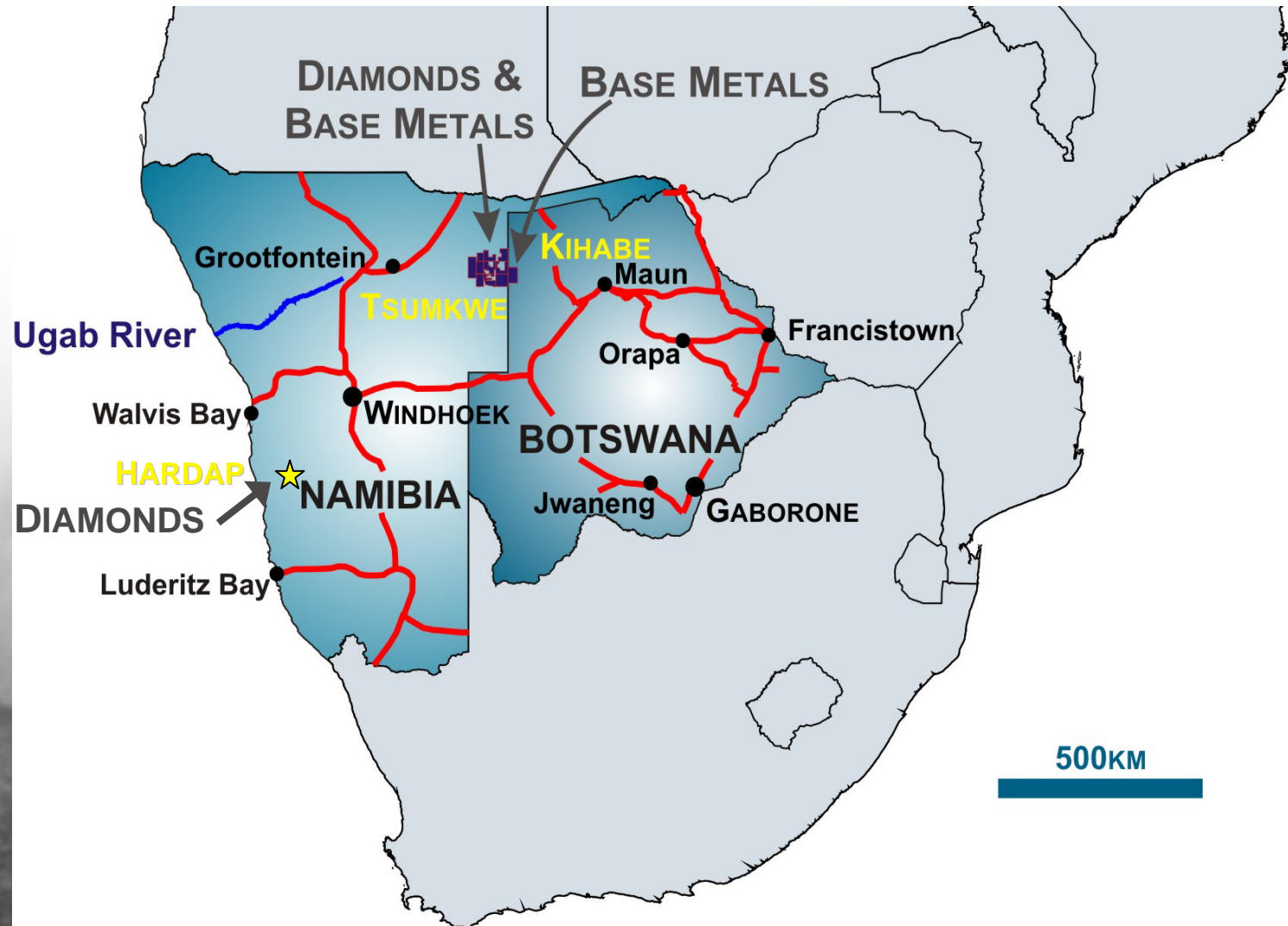
- 2008 Drilling
- ◆ Diamond
- Class 4 Garnet from drilling
- G10 Garnet Cluster from loam sampling
- Potential Kimberlite Source Areas
- Gura Kimberlites

Tsumkwe Diamond Project, Namibia

Kimberlite Breccia or Conglomerate?



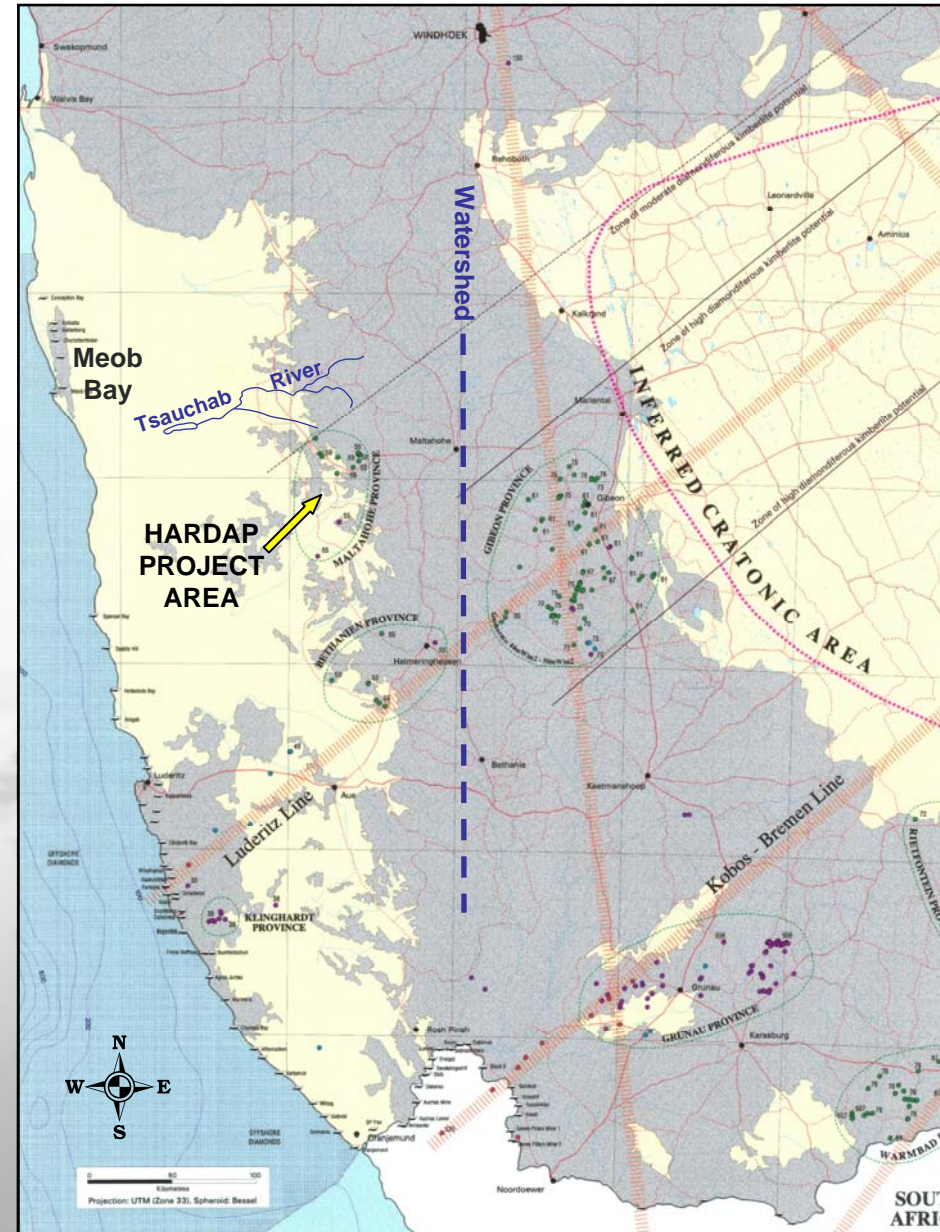
African Project Locations



Hardap Diamond Project, Namibia

- Diamonds along Coast at Meob Bay believed to source from the hinterland to the West of the watershed
- Transported by paleo-Tsauchab River

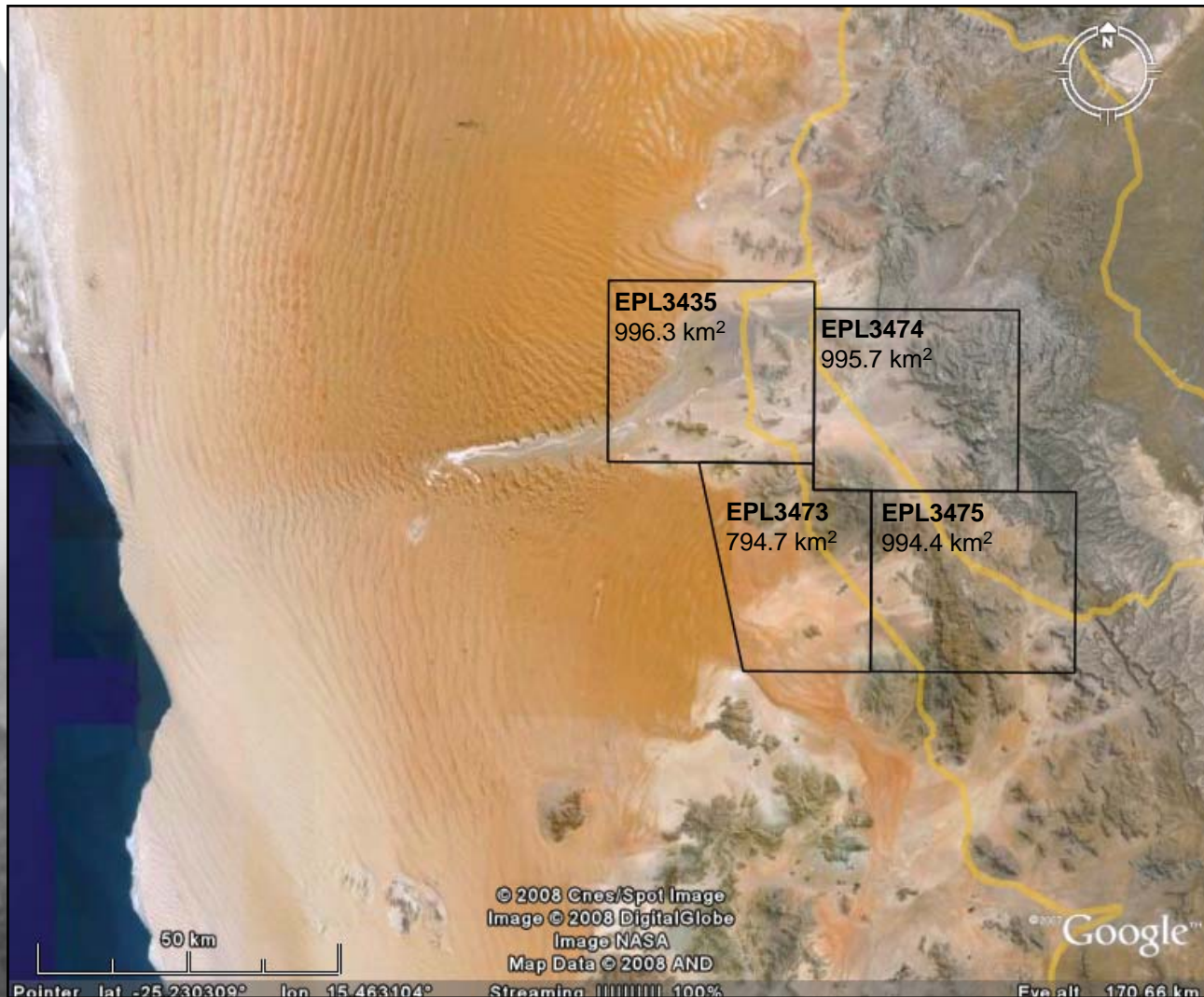
Source: Ministry of Mines and Energy, 2001



Hardap Diamond Project, Namibia

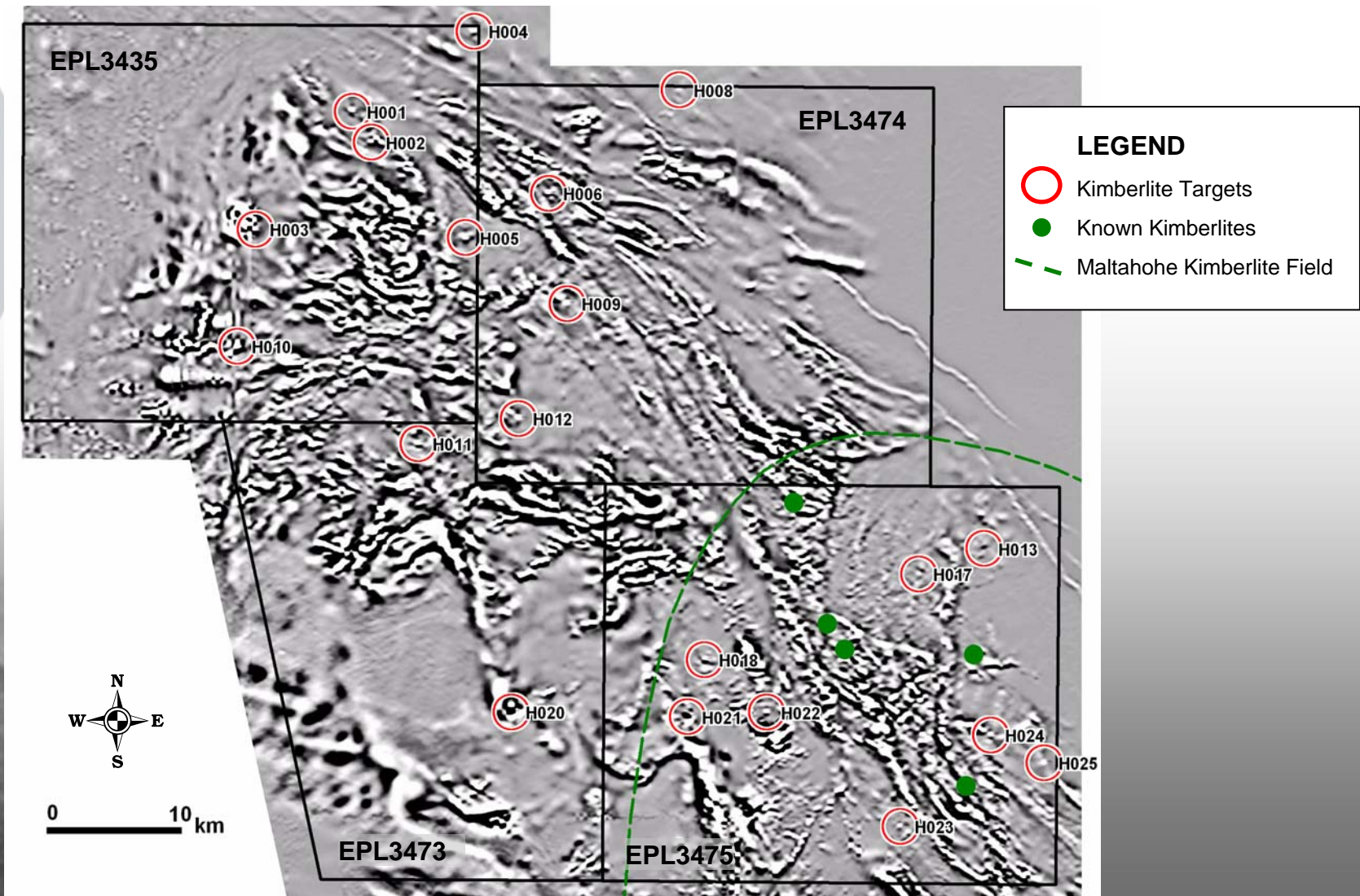
Hardap Licenses

- MTB ground holdings of approximately 3781 km²
- Diamonds deposited at Meob on coast expected to be sourced within this ground



Hardap Diamond Project, Namibia

Magnetic Targets





Thank you Ladies and Gentlemen