



MOUNT BURGESS MINING N.L.

ANNUAL GENERAL MEETING

5th November 2009

Company Details

ACN: 009 067 476

**Listed on the Australian Stock Exchange since 1985
Listing Code MTB**

Local Asset Status in Botswana granted on 31 October 2007

Issued Share Capital: 320,257,000 shares

**Street Address:
Level 4, 109 St Georges Terrace
Perth, Western Australia 6000**

**Postal Address:
PO Box Z5301 St Georges Terrace
Perth, Western Australia 6831**

**Tel: +61 8 9322 6311
Fax: +61 8 9322 4607**

**Email: mtb@mountburgess.com
Website: www.mountburgess.com**

Forward Looking Statement

This presentation contains forward looking statements in respect of the projects being reported on by the Company. Forward looking statements are based on beliefs, opinions, assessments and estimates based on facts and information available to management and/or professional consultants at the time they are formed or made and are, in the opinion of management and/or consultants, applied as reasonably and responsibly as possible as at the time that they are applied.

Any statements in respect of mineral reserves, resources and zones of mineralisation may also be deemed to be forward looking statements in that they contain estimates which the Company believes have been based on reasonably probable assumptions in respect of mineralisation that has been found. Exploration targets are conceptual in nature and are formed from projection of the known resource dimensions along strike. The quantity and grade of an exploration target is insufficient to define a Mineral Resource. Forward looking statements are not statements of historical fact, they are based on reasonable projections and calculations, the ultimate results or outcomes of which may differ materially from those described or incorporated in the forward looking statements. Such differences or changes in circumstances to those described or incorporated in the forward looking statements may arise as a consequence of the variety of risks, uncertainties and other factors relative to the exploration and mining industry and the particular properties in which the Company has an interest.

Such risks, uncertainties and other factors could include but would not necessarily be limited to fluctuations in metals and minerals prices, fluctuations in rates of exchange, changes in government policy and political instability in the countries in which the Company operates.

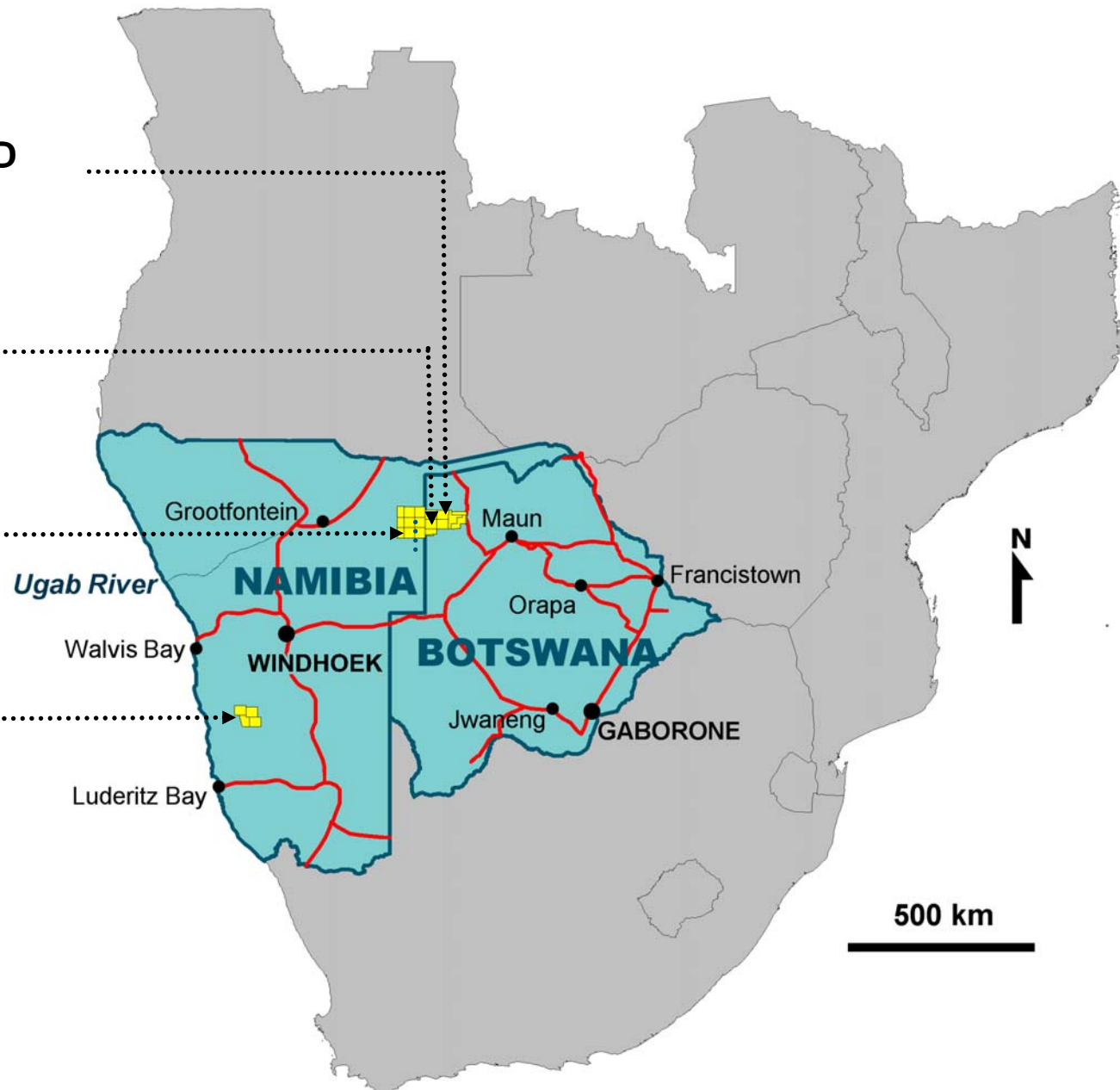
Project Locations, Africa

WEST NGAMILAND
Diamond Project

KIHABE
Base Metals Project

TSUMKWE
Diamond Project

HARDAP
Diamond Project



Kihabe Base Metals Project

Resource Category	Total Tonnes	Kihabe Resource	Nxuu Resource
Indicated	16.4 million	16.4 million	-
Inferred	11.0 million	5.6 million	5.4 million
Total	<u>27.4 million</u>	<u>22.0 million</u>	<u>5.4 million</u>

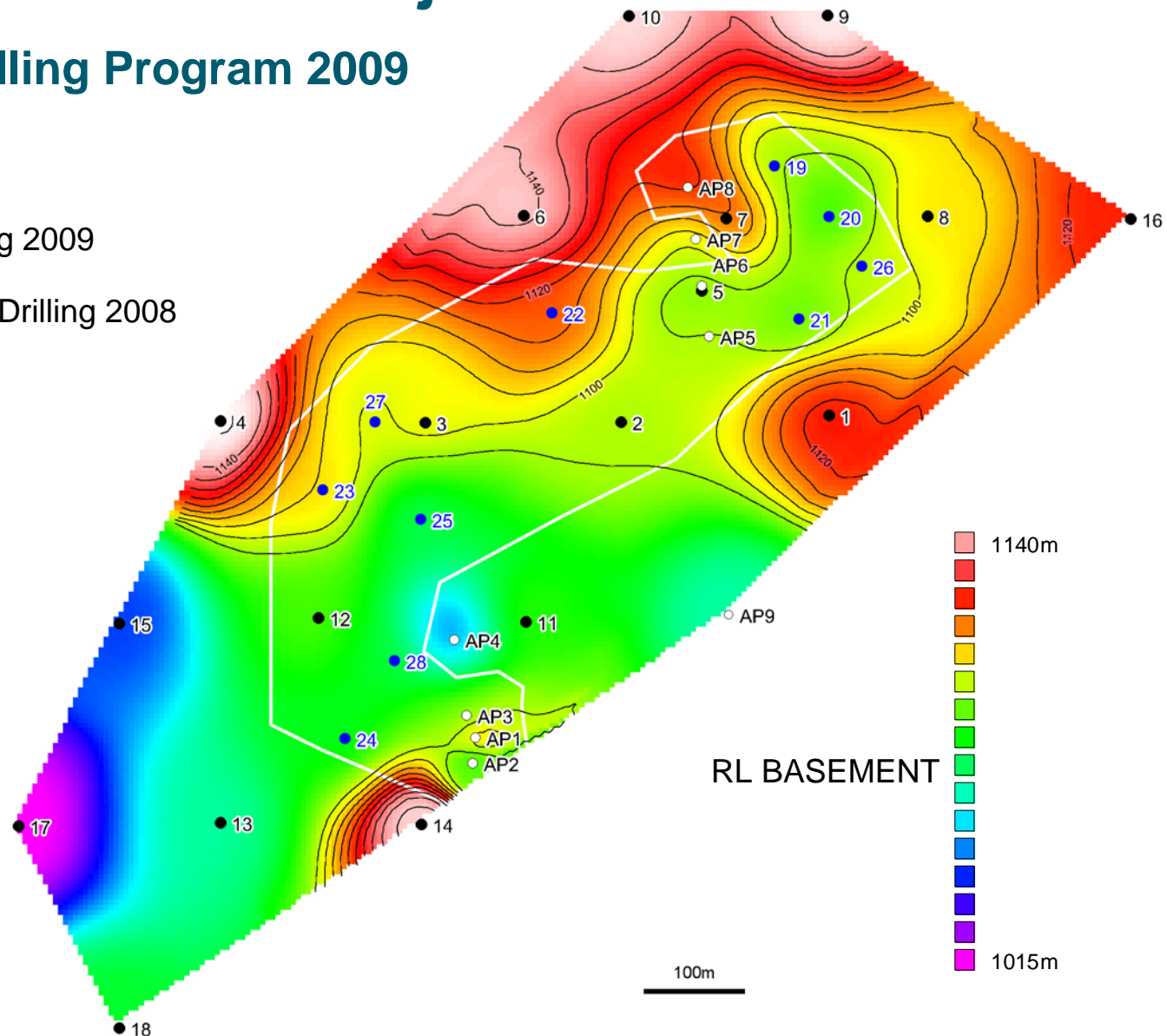
Note:

The zinc equivalent grade was calculated applying the refined metal prices as of 17th July 2008, the date Ravensgate Pty Ltd, geological consultants compiled the Kihabe resource model. On this date zinc was trading @ US\$1,810/t and lead was trading @ US\$1,955/t.

Kihabe Base Metals Project

Nxuu RC Drilling Program 2009

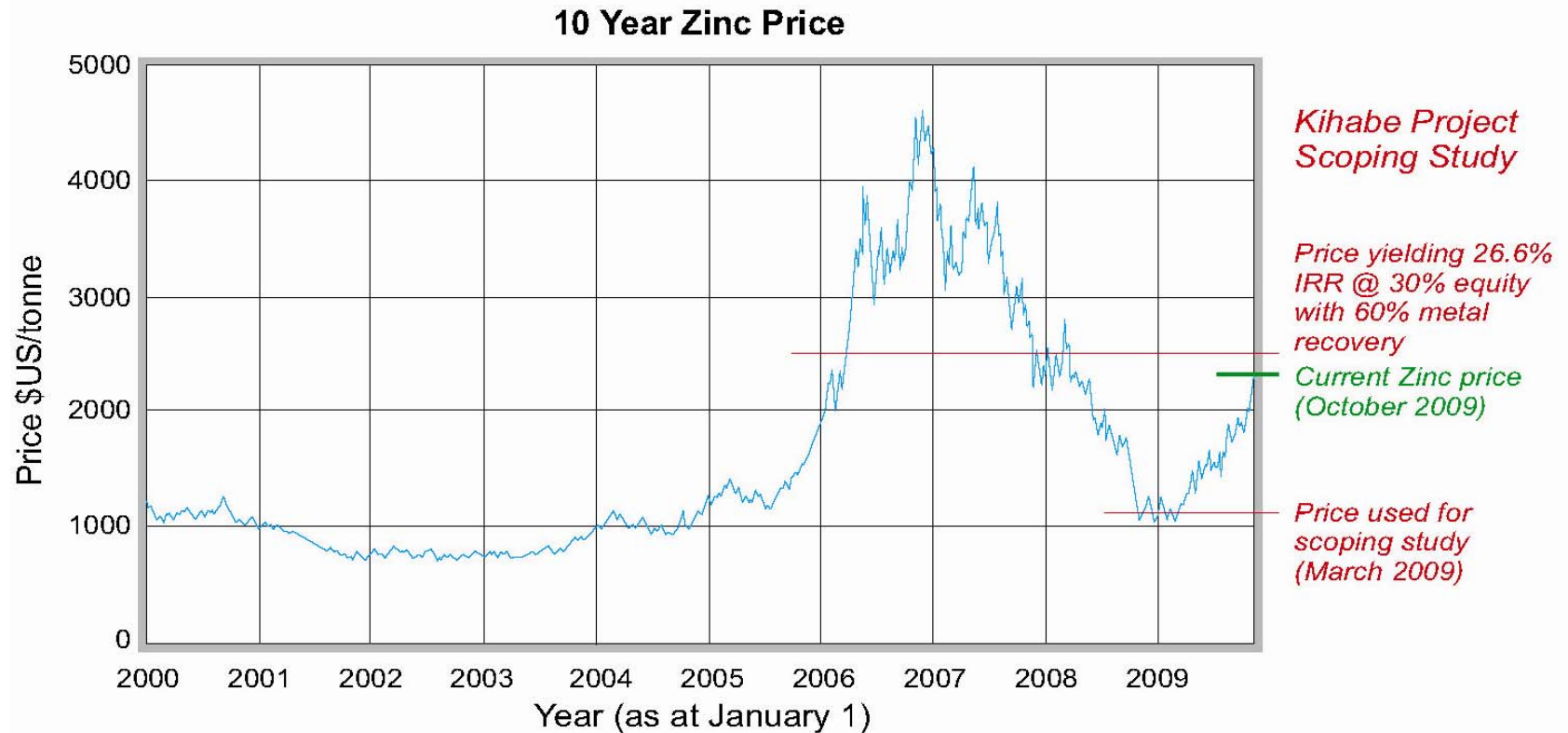
- MTB RC Drilling 2009
- MTB Diamond Drilling 2008
- Billiton Drilling



Kihabe Base Metals Project



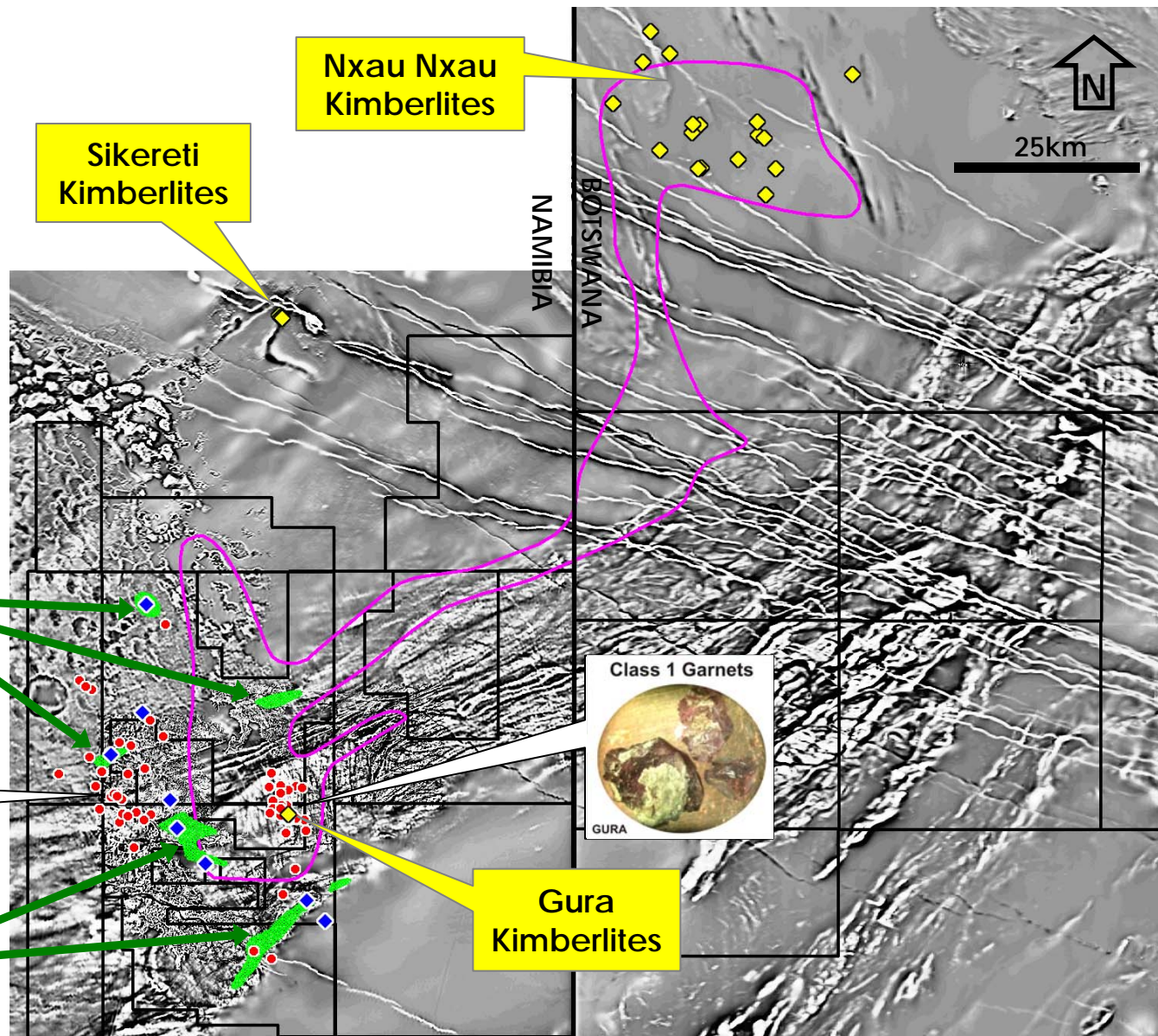
Kihabe Base Metals Project



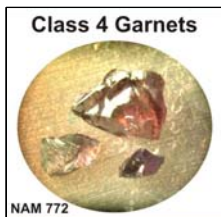
Tsumkwe Diamond Project

LEGEND

- Known Kimberlites
- Recovered Diamonds
- Class 4 Garnets from drilling
- G10 Garnet Cluster from loam sampling and drilling
- Possible Rift Valley

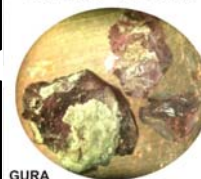


Potential Primary?
or Secondary?
Anomalies



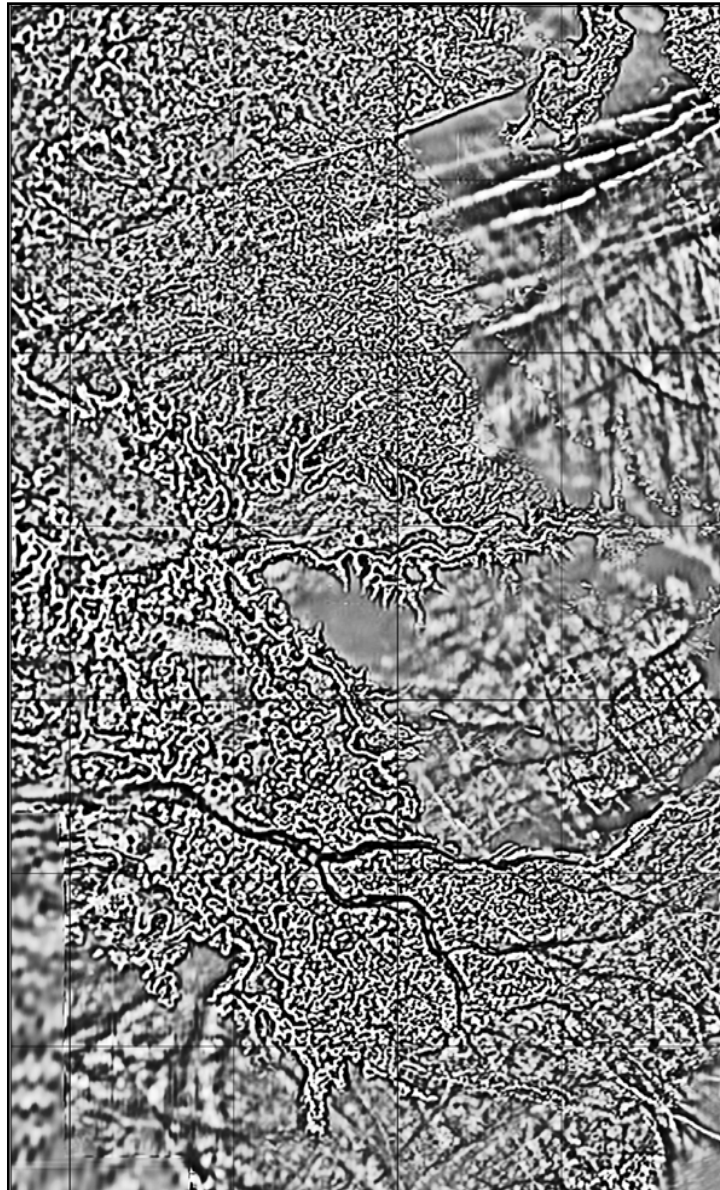
Potential Local
Kimberlite Source
Area

Class 1 Garnets

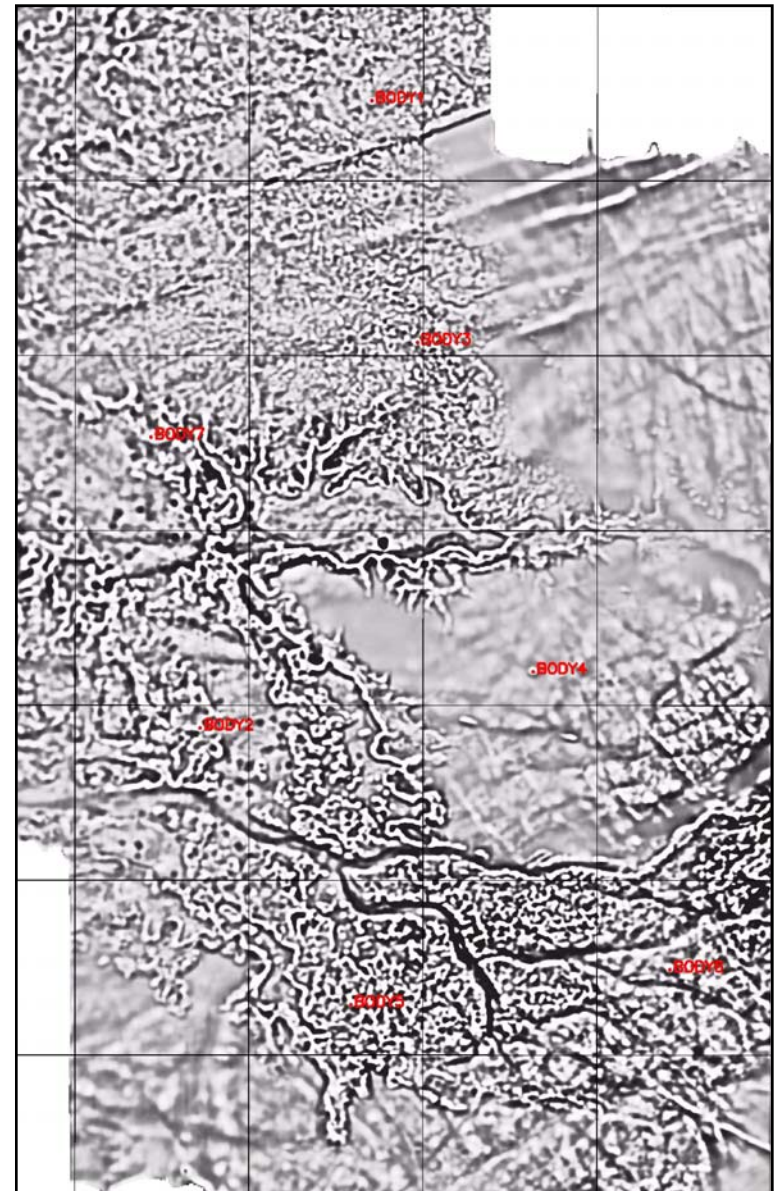


Tsumkwe Diamond Project

2nd Vertical Derivative










Filtered 2nd Vertical Derivative



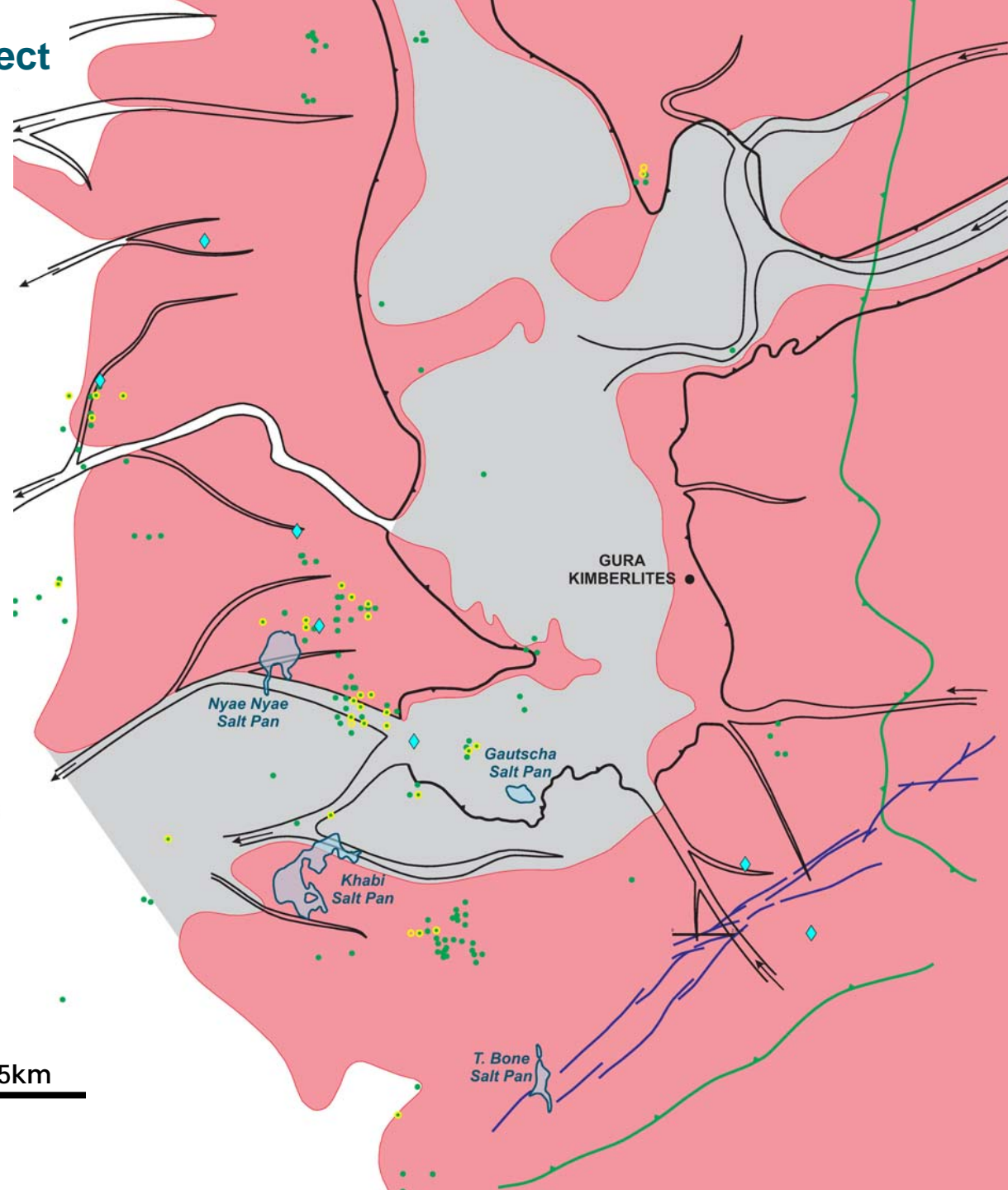
Tsumkwe Diamond Project

Pre Kalahari Palaeo Topography

Structure Sedimentation Erosion Surfaces

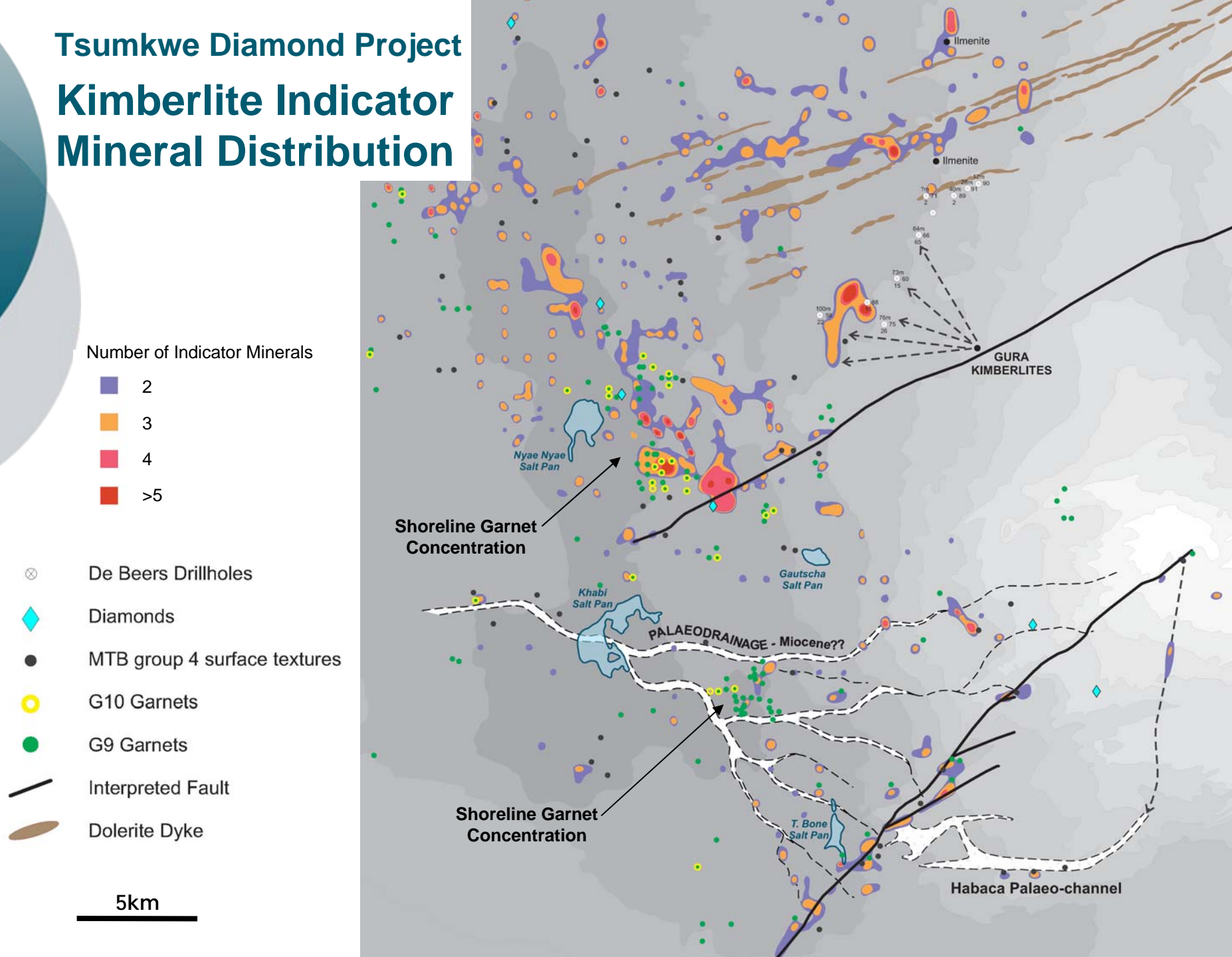
-  Pleistone to Recent Basin Development (5My - 0)
-  Kalahari Sedimentation (40My - 5My)
-  Denuded Cretaceous surface Miocene (20My)
-  Cretaceous Graben
-  Diamondiferous Kimberlite
-  G10 Garnets
-  G9 Garnets

5km



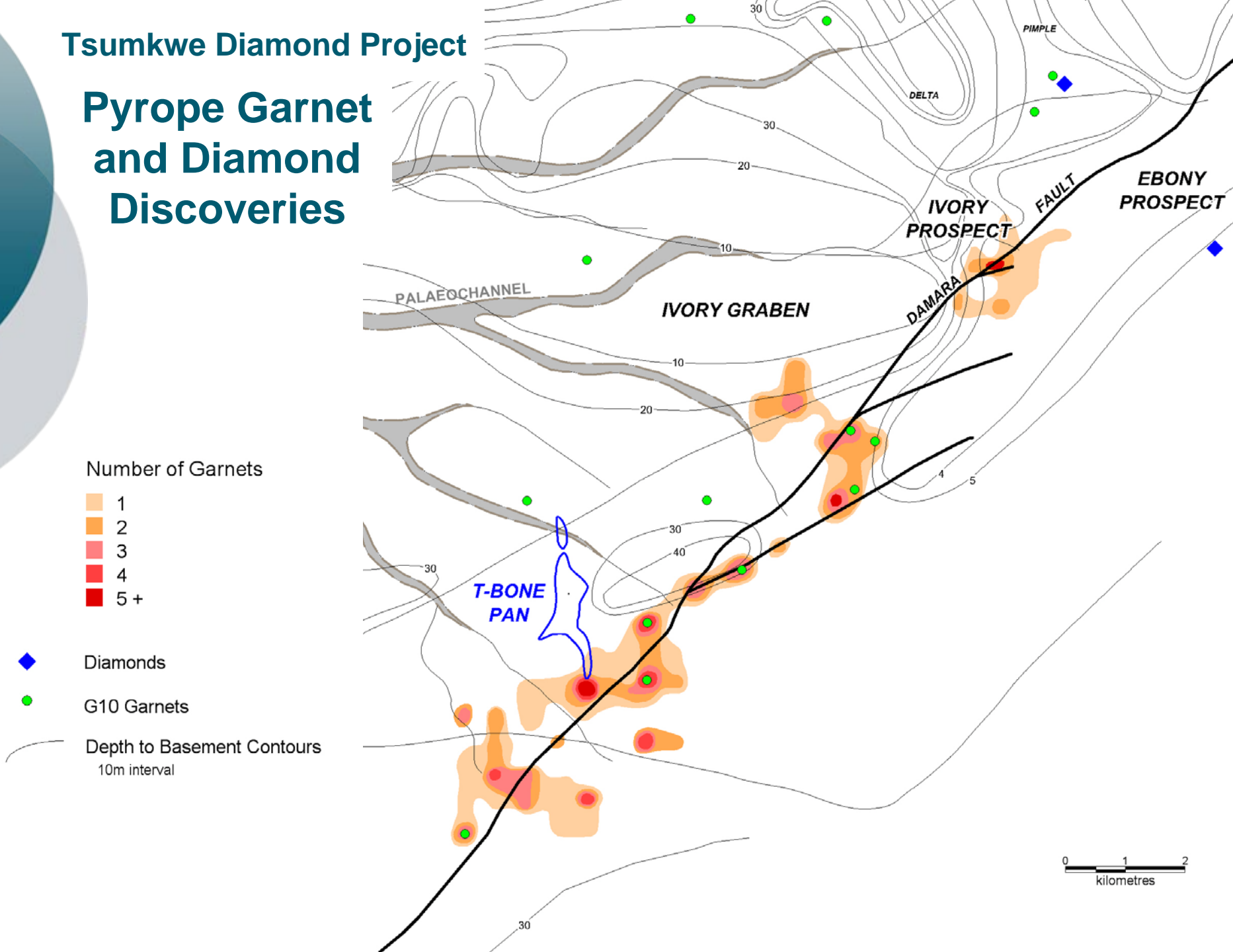
Tsumkwe Diamond Project

Kimberlite Indicator Mineral Distribution



Tsumkwe Diamond Project

Pyrope Garnet and Diamond Discoveries





Thank you